



Langham Mansions
Earl's Court Square, SW5

CHESTERTONS





Set within an elegant and highly regarded red brick mansion block, this exceptional three double bedroom apartment occupies a first floor position and offers wonderfully bright and well balanced accommodation, ideal for both family living and entertaining.

At the heart of the home is an impressive open plan kitchen and reception room, bathed in natural light from its sunny south-facing aspect. The kitchen is thoughtfully designed with integrated appliances and generous space for a dining table, while the reception area is enhanced by a sleek contemporary fireplace, creating a stylish focal point.

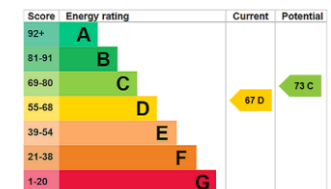
The principal bedroom features a stylish en suite bathroom, while the two additional bedrooms are both spacious doubles. One has been cleverly arranged to include a dedicated work from home area, and both benefit from extensive built in storage. These bedrooms are served by a well appointed family bathroom with a large walk in shower.

The apartment has been refurbished to a high standard and is immaculately presented throughout and complete with wooden flooring. An additional private lobby, shared with just one neighbouring apartment, provides valuable secure storage.

Langham Mansions is in sought after Earls Court Square and residents can enjoy access to private communal gardens (STA). The apartment is within easy access of a wide selection of restaurants, cafés and shops, as well as excellent transport connections, including Earl's Court

- First floor apartment in portered mansion block with lift access
- Three double bedrooms, two bathrooms
- Bright living room with eat in kitchen
- Access to communal gardens (STA)

Asking Price £1,100,000



Tenure: Leasehold 952 years

Service Charge: £6400

Ground Rent: £50

Local Authority: Royal Borough of Kensington & Chelsea

Council Tax Band: G

Chestertons South Kensington Sales

44-48 Old Brompton Road

London

SW7 3DY

southkensington@chestertons.co.uk

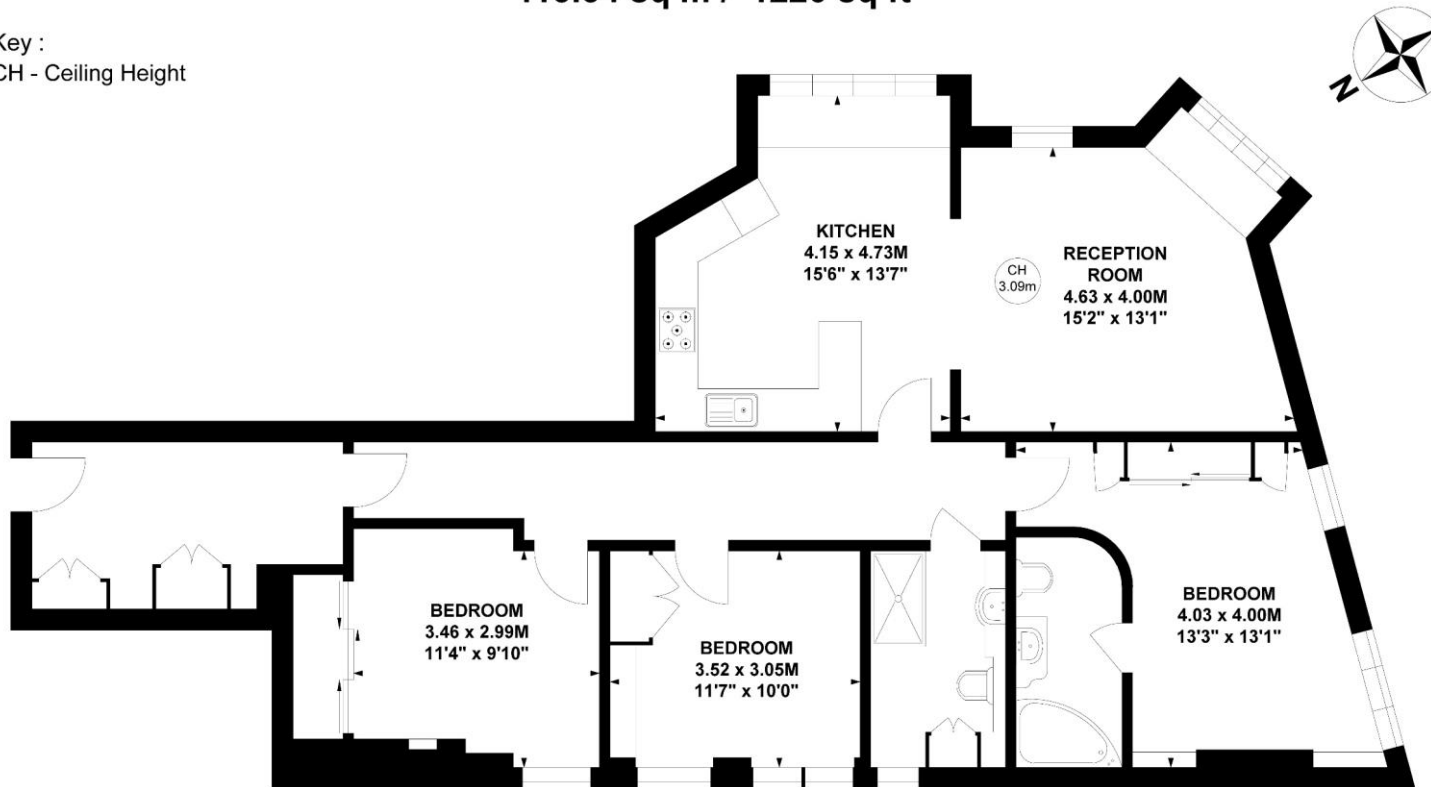
020 7589 1234

chestertons.co.uk

Langham Mansions, SW5

Approximate gross internal area
113.34 sq m / 1220 sq ft

Key :
CH - Ceiling Height



First Floor

Not to scale, for guidance only and must not be relied upon as a statement of fact.
All measurements and areas are approximate only

Chesterton UK Services Limited trading as Chestertons for themselves and for the vendor of this property whose agents they are, give notice that (i) these particulars do not constitute any part of an offer or contract, (ii) all statements contained within these particulars are made without responsibility on the part of Chestertons or the vendor, (iii) whilst made in good faith, none of the statements contained within these particulars are to be relied upon as a statement or representation of fact, (iv) any intending purchasers must satisfy themselves by inspection or otherwise as to the correctness of each of the statements contained within these particulars, (v) the vendor does not make or give either Chestertons or any person in their employment any authority to make or give representation or warranty whatsoever in relation to this property. Wide angle lenses may be used. ©Copyright Chestertons | Chesterton UK Services Limited | Registered Office 40 Connaught Street, Hyde Park, London W2 2AB Registered Company Number 05334580.



This paper is
100% recyclable