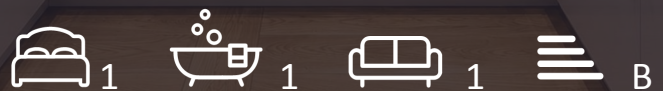


Milford House

190 Strand, WC2R 1AB

£965 Per Week



1



1

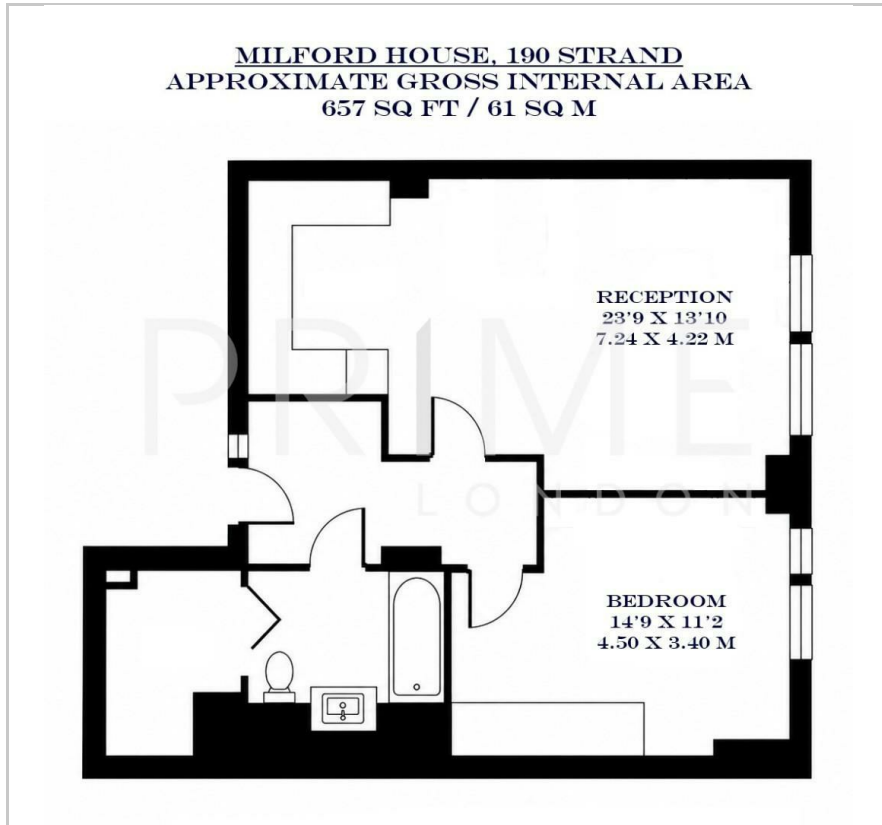


1

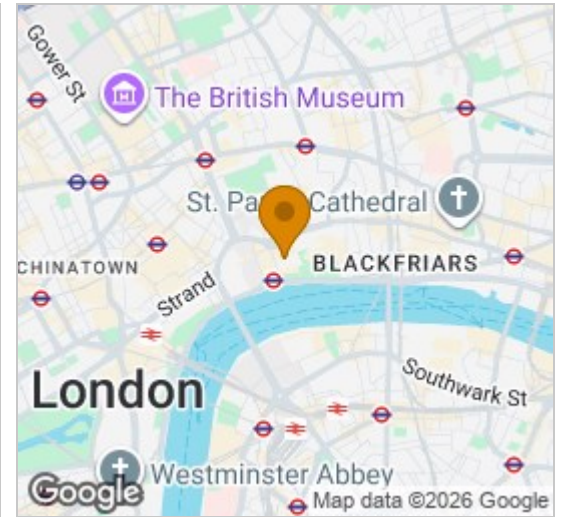


B

Floor Plan



Area Map



Energy Efficiency Graph



Viewing

By appointment. Contact us on 0207 052 1075 if you wish to arrange a viewing appointment for this property, or require further information.

- Exceptional one bedroom apartment
- 667 sq ft (62 sqm)
- Open plan kitchen and reception
- Residents only gym, pool, spa and cinema
- Marbled bathroom Suite
- 24 hour concierge

This exceptional one bedroom apartment, located in the prestigious 190 Strand development, is available for lease through Prime London.

Totalling 667 sq ft (62 sqm), the property boasts a generous open plan kitchen and reception room, with floor to ceiling windows, allowing for excellent natural light throughout. The bedroom is modern and spacious, with a fitted built in wardrobe.

The property is situated within the 190 The Strand development, which offers its residents a private gym, pool, spa, cinema and 24 hour concierge.

Positioned just a short walk away from the prestigious area of Covent Garden, the apartment has easy access to some of London's best restaurants, cafes and boutiques.

For transport, Milford House is just a stone's throw away from Temple station, which offers excellent transport links across the city.



These particulars, whilst believed to be accurate are set out as a general outline only for guidance and do not constitute any part of an offer or contract. Intending purchasers should not rely on them as statements of representation of fact, but must satisfy themselves by inspection or otherwise as to their accuracy. No person in this firm's employment has the authority to make or give any representation or warranty in respect of the property.