



3



2



1



C





We are delighted to offer this beautifully refurbished three-bedroom period terraced home, set within the highly desirable Treveor Close in central Worthing. Offered chain-free, the property combines carefully retained character details with a high-quality modern finish throughout, creating a stylish and practical home within easy reach of the town centre.

The ground floor is arranged to provide generous and flexible living space, with two well-proportioned reception rooms suited to both everyday living and entertaining. To the rear, the contemporary fitted kitchen has been finished to a high standard and includes integrated Bosch appliances, giving the property a clean, modern feel while remaining in keeping with the character of the house.

The entrance hall and staircase make an excellent first impression, with newly fitted carpets, panelled detailing, original-style internal doors, and attractive stained-glass features adding warmth and period charm. The refurbishment has been carried out with a clear focus on preserving the home's 1930s character. Feature fireplaces, curved ceilings, traditional joinery, fresh colour-drenched décor, and updated fittings all contribute to the charm of this property.

Upstairs, the spacious landing enhances the sense of light and proportion and leads to three well-presented bedrooms, each newly decorated and carpeted, while the stylishly refitted bathroom provides a smart contemporary finish.

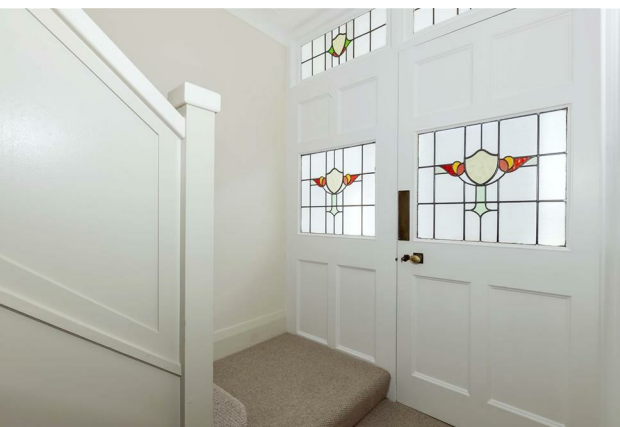
Outside, the property benefits from a secluded and quiet rear garden with mature planting and a raised decked area, ideal for outdoor seating and dining. The peaceful setting of Treveor Close also allows the front garden to be enjoyed as an additional recreational space.

Additional benefits include full rewiring, a new gas central heating system, freehold tenure, and vacant possession. Further development potential also exists within the impressively large loft space.

The property's blend of period charm, as-new presentation, and excellent convenience represents a rare opportunity to purchase a spacious family home within easy reach of Worthing's superb shopping facilities, transport links, entertainment, and seafront.

Key Features

- Beautifully refurbished three-bedroom period terraced home
- Highly sought-after Treveor Close location in Worthing town centre
- Two spacious reception rooms
- Contemporary fitted kitchen with Bosch appliances
- Stylishly refitted modern bathroom
- Retained character features including fireplaces and original doors
- New central heating system and full rewiring throughout
- Landscaped low-maintenance rear garden with raised decking area
- Vacant possession and chain free sale
- Council Tax Band D | EPC Rating C



robertluff.co.uk

30 Guildbourne Centre, Worthing, West Sussex, BN11 1LZ | 01903 331247 | info@robertluff.co.uk

Robert
Luff & Co



robertluff.co.uk

30 Guildbourne Centre, Worthing, West Sussex, BN11 1LZ | 01903 331247 | info@robertluff.co.uk

Robert
Luff & Co

