



Bluecoat Court, Hertford SG14 1AY

£335,000



2



1

Taylor Phelps

Estate Agency

Taylor Phelps

Estate Agency

Taylor Phelps are pleased to offer this rarely available two bedroom apartment forming part of the exclusive Bluecoat Court development in Hertford. this property is located on the second (top) floor and boasts a superb modern kitchen, luxury bathroom and spacious living room, with triple glazing throughout and being a share of freehold this apartment really is not to be missed. Hertford itself offer numerous town centre amenities, highly regarded schools and two train stations serving central London. Available Chain Free. Allocated Parking Space.





Taylor Phelps
Estate Agency



Taylor Phelps
Estate Agency



Taylor Phelps
Estate Agency

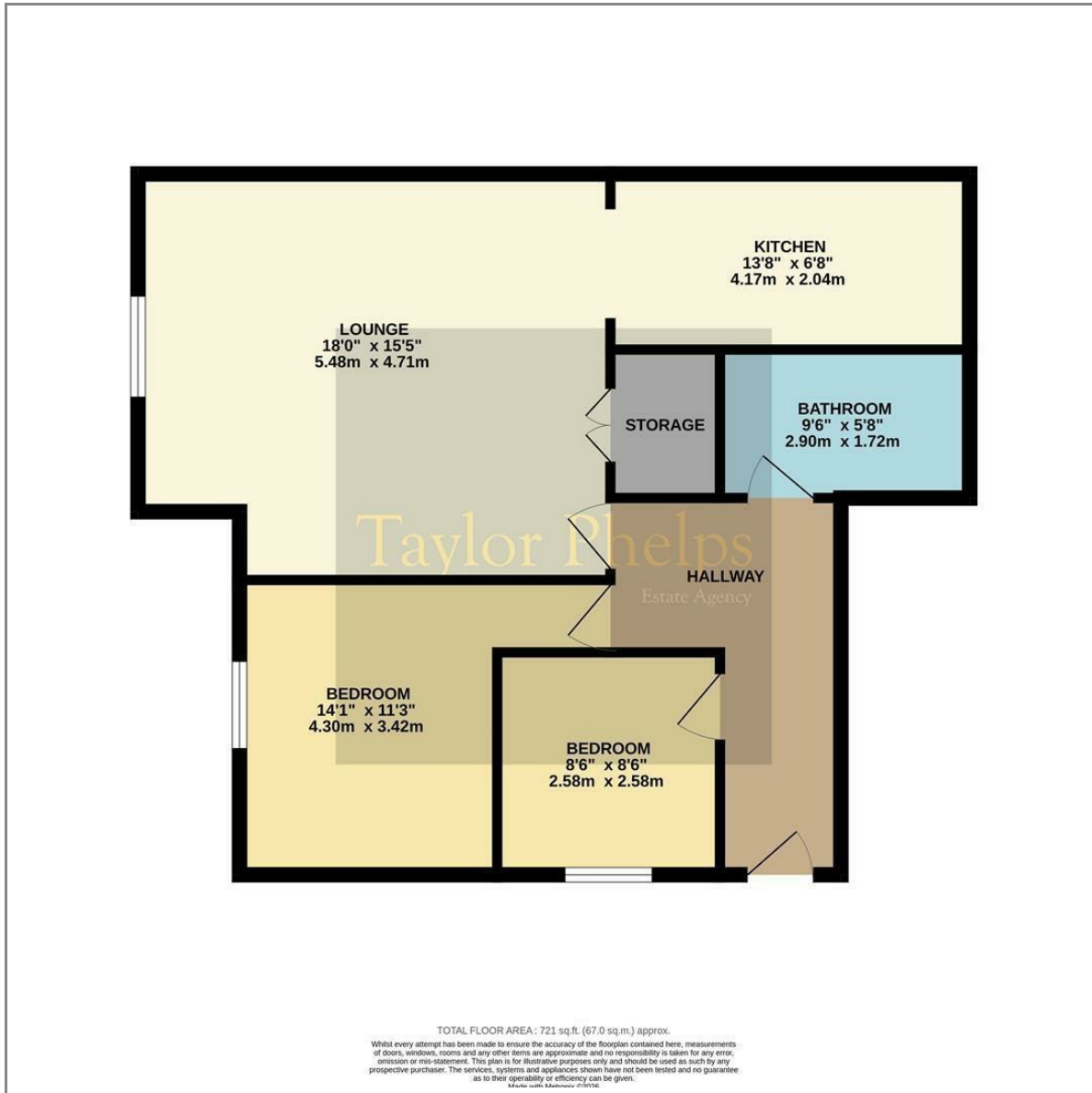


Taylor Phelps
Estate Agency

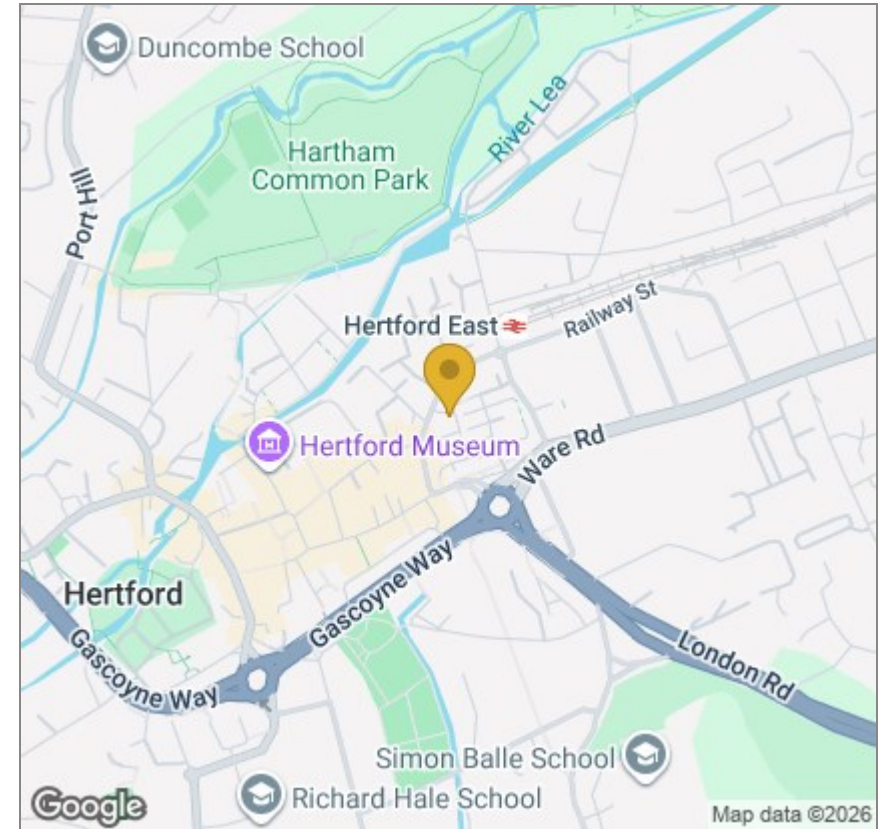




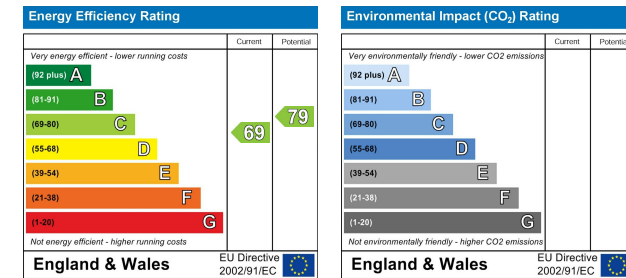
Floor Plan



Area Map



Energy Efficiency Graph



These particulars, whilst believed to be accurate are set out as a general outline only for guidance and do not constitute any part of an offer or contract. Intending purchasers should not rely on them as statements of representation of fact, but must satisfy themselves by inspection or otherwise as to their accuracy. No person in this firm's employment has the authority to make or give any representation or warranty in respect of the property.

01920 459000

hello@taylorphelps.co.uk

5 Frenchs Yard, Amwell End, Ware, Hertfordshire, SG12 9HP

www.taylorphelps.co.uk

