



- Tucked away is this modern end of terrace property
- Sizeable lounge dining room with French doors onto garden
- Fitted kitchen and handy ground floor cloakroom
- Two double bedrooms and bathroom with shower over bath
- Fully enclosed, south facing garden to rear
- Two private parking spaces located at the front of the terrace



"A modern two double bedroom end of terrace property with a private, sunny south facing garden, allocated parking and offered for sale with now onward chain!"

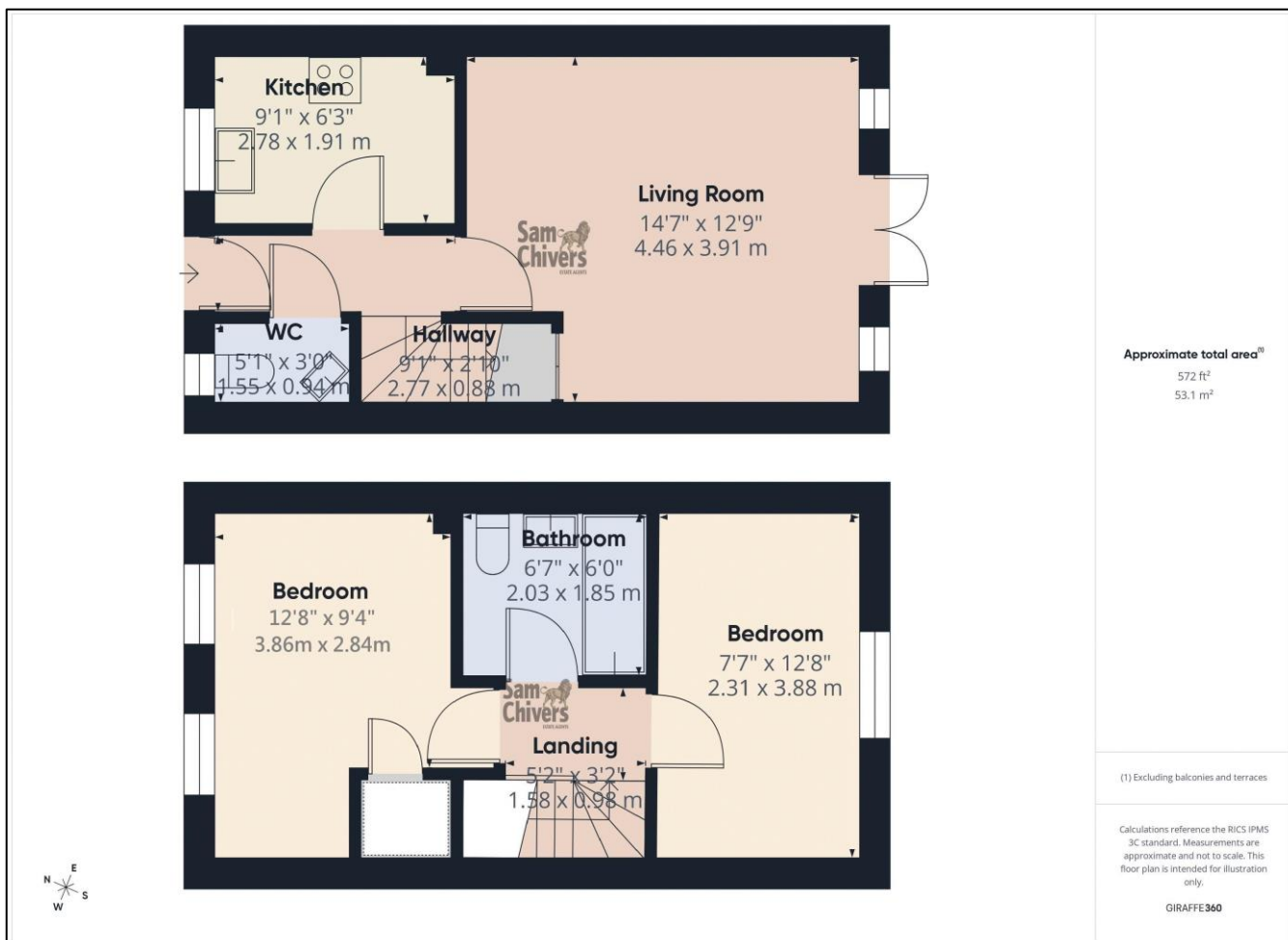
The accommodation comprises an entrance hallway with handy cloakroom. The lounge dining room is situated to the rear with large store cupboard and French doors opening onto the garden. There is a fitted kitchen to front with integrated electric oven, gas hob and extractor hood over. On the first floor are two double bedrooms, the rear having far reaching views through the Somer valley. The bathroom has shower over bath.

Gas central heating and double glazing.

Outside to front is a small garden space, ideal as a bin store area. The rear garden is south facing, laid to gravel and extremely private. There are two owned parking spaces in the purpose-built car park adjacent to the terrace.

**Tenure:** Freehold. **Council Tax Band:** B





Find us online!



[www.samchiversproperty.co.uk](http://www.samchiversproperty.co.uk)



Facebook: Sam Chivers Estate Agents



Instagram: @samchiversestateagents

rightmove  Zoopla

Score	Energy rating	Current	Potential
92+	A		
81-91	B		87 B
69-80	C	74 C	
55-68	D		
39-54	E		
21-38	F		
1-20	G		

Sam Chivers Estate Agents can also provide mortgage and conveyancing recommendations should you require such a service. Please contact our office on:

01761 411020 or email us at [sales@samchiversproperty.co.uk](mailto:sales@samchiversproperty.co.uk)

These sales particulars provide an approximate guide and form no part of a contract. It is the purchaser's responsibility to satisfy themselves that the property has been accurately described and that all fixtures and apparatus are functioning correctly. Your home may be at risk if you do not keep up repayments secured against it.