

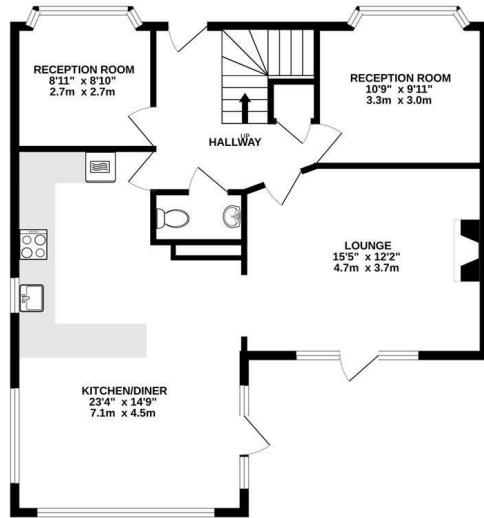


14 Archer Crescent, Tiptree, Colchester, CO5 0GS

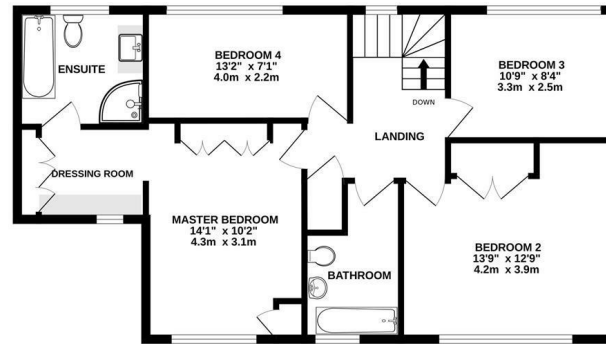
£2,200 Per Month

- Available end of June
- 2nd reception room
- Ensuite and family bathroom
- Viewing highly recommended
- Four bedrooms
- Lounge
- Garage and parking
- Study
- Kitchen/Diner
- Garden

GROUND FLOOR
793 sq.ft. (73.7 sq.m.) approx.

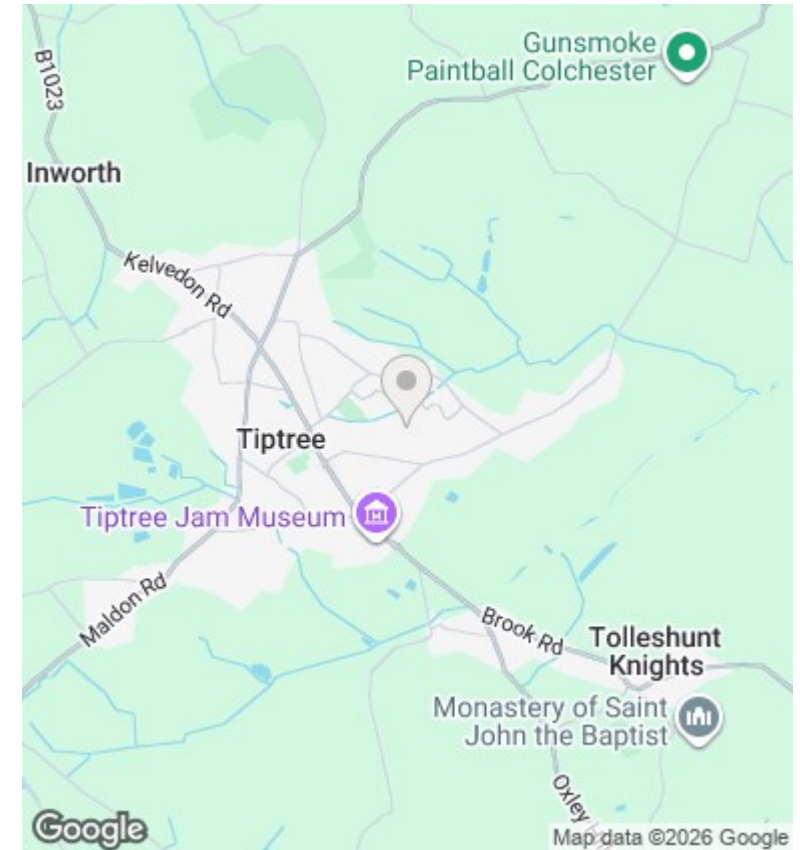


1ST FLOOR
748 sq.ft. (69.5 sq.m.) approx.



TOTAL FLOOR AREA : 1541 sq.ft. (143.2 sq.m.) approx.

Whilst every attempt has been made to ensure the accuracy of the floorplan contained here, measurements of doors, windows, rooms and any other items are approximate and no responsibility is taken for any error, omission or mis-statement. This plan is for illustrative purposes only and should be used as such by any prospective purchaser. The services, systems and appliances shown have not been tested and no guarantee as to their operability or efficiency can be given.
Made with Metropix ©2026



Directions

Viewings

Viewings by arrangement only. Call 01376563656 to make an appointment.

Council Tax Band

F

EPC Rating:

C

Energy Efficiency Rating		
	Current	Potential
<i>Very energy efficient - lower running costs</i>		
(92 plus) A		
(81-91) B		
(69-80) C	73	
(55-68) D		
(39-54) E		
(21-38) F		
(1-20) G		
<i>Not energy efficient - higher running costs</i>		
England & Wales	EU Directive 2002/91/EC	