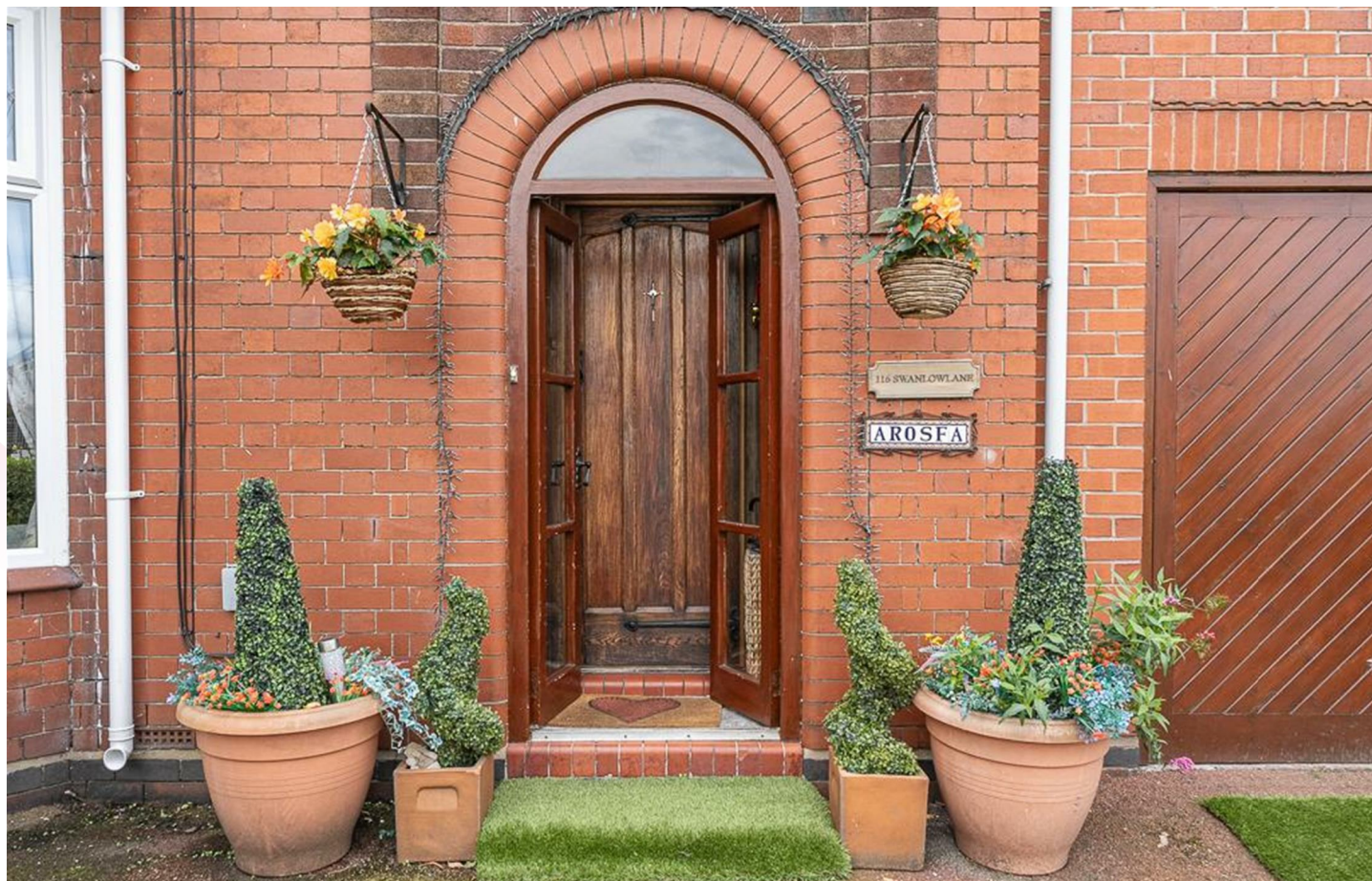




ESTATE AGENTS

[www.cwestateagents.co.uk](http://www.cwestateagents.co.uk)



**Swanlow Lane, Winsford CW7 1JA**

Asking price £350,000

5 2 3 D



01606 514 152 [info@cwestateagents.co.uk](mailto:info@cwestateagents.co.uk)  
 @CWestateAgent @CWestateAgents



# Swanlow Lane

, Winsford, CW7 1JA

Asking price £350,000



## Entrance Porch

Front - Off Road Parking for several Vehicles.

## Hallway

Rear - Enclosed mature garden.

## Lounge

16'1 x 13'9 (4.90m x 4.19m)

## Sitting Room

14'00 x 11'11 (4.27m x 3.63m)

## Breakfast Kitchen

16'3 x 10'8 (4.95m x 3.25m)

## Conservatory

16'0 x 9'8 (4.88m x 2.95m)

## Landing

## Bedroom One

13'11 x 13'7 (4.24m x 4.14m )

## En Suite to Bedroom One

## Bedroom Two

15'3 x 9'8 (4.65m x 2.95m)

## Bedroom Three

13'2 x 9'9 (4.01m x 2.97m)

## Bedroom Four

12'3 x 9'11 (3.73m x 3.02m)

## Bedroom Five

8'8 x 6'11 (2.64m x 2.11m)

## Family Bathroom

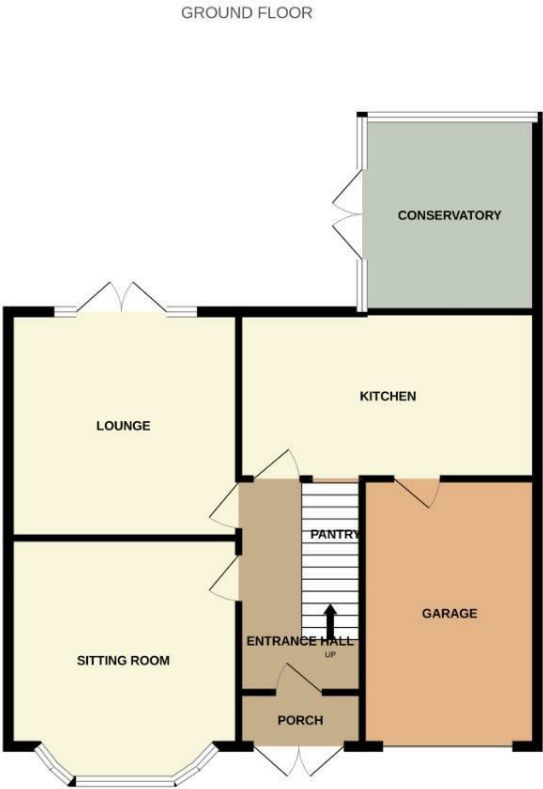
## Separate W.C.

## Garage

## Externally



Floor Plan

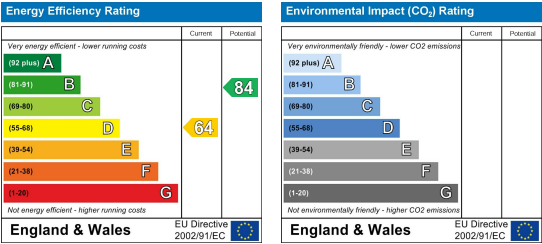


Whilst every attempt has been made to ensure the accuracy of the floorplan contained here, measurements of doors, windows, rooms and any other items are approximate and no responsibility is taken for any error, omission or mis-statement. This plan is for illustrative purposes only and should be used as such by any prospective purchaser. The services, systems and appliances shown have not been tested and no guarantee as to their operability or efficiency can be given.  
Made with Metropix ©2023

Viewing

Please contact us on 01606 514 152 if you wish to arrange a viewing appointment for this property or require further information.

Energy Efficiency Graph



These particulars, whilst believed to be accurate are set out as a general outline only for guidance and do not constitute any part of an offer or contract. Intending purchasers should not rely on them as statements of representation of fact, but must satisfy themselves by inspection or otherwise as to their accuracy. No person in this firm's employment has the authority to make or give any representation or warranty in respect of the property.