



Property Features

- Four Bedroom Detached Family Home
- Popular Location
- Within Walking Distance to Grammar Schools
- Close to High Wycombe Leisure Centre
- Driveway Parking
- En-Suite Shower Room
- Garage
- Unfurnished
- Council Tax Band F / EPC Rating D
- Available 6th March

Full Description

Located in a desirable area is this detached family house. The property boasts four bedrooms and two modern bathrooms, along with an ample amount of living space.

Upon entering the property, you are greeted by an entrance hall that leads on to the living room. This room is flooded with natural light and offers a decorative fireplace. Adjoining the living room is the dining space which opens to the garden. The modern kitchen boasts a range of integrated appliances and offers ample storage space for all your kitchen essentials. Downstairs also offers a separate utility room, downstairs WC and integral garage.

Upstairs, the property comprises of four bedrooms and two contemporary bathrooms. The house also benefits from a pleasant rear garden, providing a perfect recreational space for summer evenings.

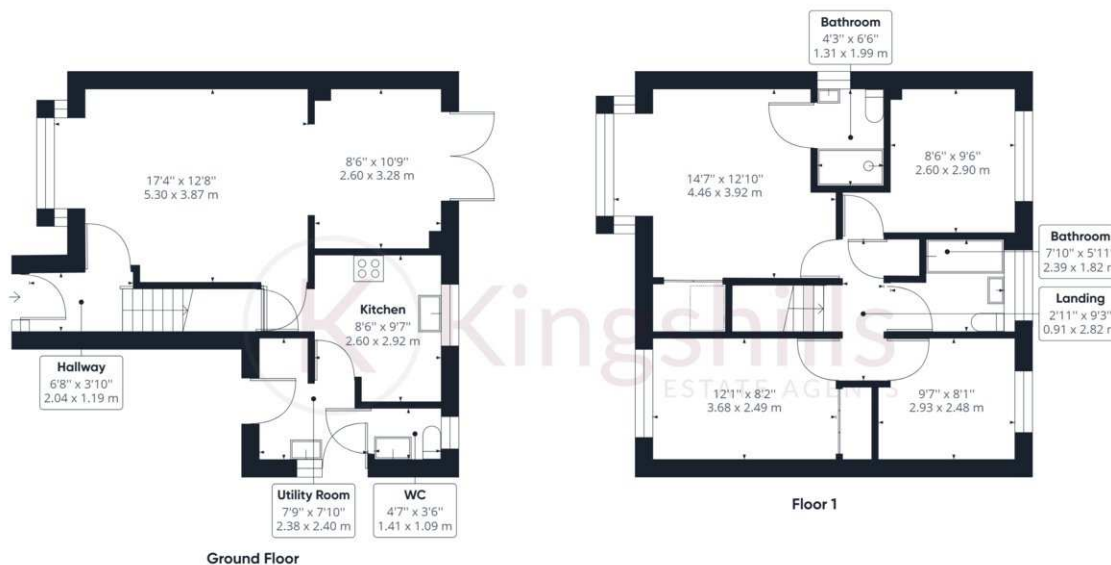
Located within close proximity of the High Wycombe Town Centre, this property offers excellent transport links, including easy access to the M40 motorway, making it an ideal location for commuters. The High Wycombe train station is also nearby, with direct trains to London Marylebone, making it perfect for those looking to work in the city.

The property is within walking distance to John Hampden and Wycombe High Grammar schools. Other popular independent schools include Godstowe Preparatory School, Wycombe Abbey School, and Pipers Corner School. Within walking distance is also Handy Cross sports and leisure centre.

Available 6th March on an unfurnished basis.







Approximate total area⁽¹⁾

1085.15 ft²

100.81 m²

(1) Excluding balconies and terraces

While every attempt has been made to ensure accuracy, all measurements are approximate, not to scale. This floor plan is for illustrative purposes only.

GIRAFFE360