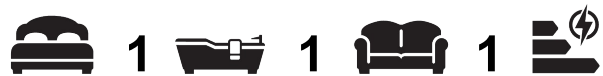




1409 Bow Green, London, E3 4BH

£519 Per week



Spacious, stunning views of Canary Wharf and set on a high floor within Bow View. The property comprises, a modern open plan kitchen, bright and spacious reception, luxury bathroom, great storage, study and a large balcony.

Bow Green is a prestigious development by Berkeley Homes, perfectly located just a few moments from the heart of London's fastest growing business district and equally well connected, accessing central London in a matter of minutes. Bow Green offers a High-End lifestyle for those moving in the fast lane, with residents enjoying exclusive use of the five-star amenities such as gym, swimming pool, cinema, 24-hr concierge, on-site Sainsbury's and more.

\*Photos are of a similar property for example purposes.

Electricity supply – Mains | Heating & Hot water - Mains | Water supply – Mains | Sewerage – Mains | Internet: FTTP | Lift Access | Parking: No | Cladding: EWS1 Certificate available.

To check broadband and mobile phone coverage please visit Ofcom  
To check planning permission please visit Tower Hamlets Council Website, Planning & Building Control





DISTRICTS



DISTRICTS



DISTRICTS



DISTRICTS



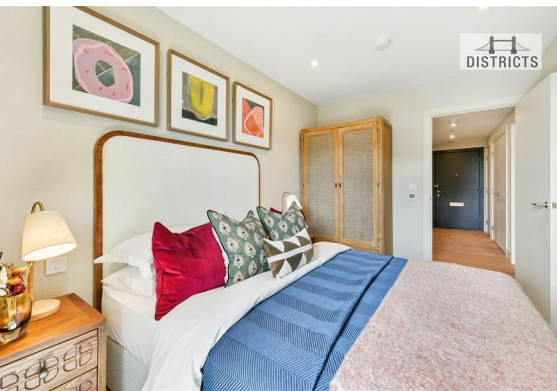
DISTRICTS



DISTRICTS



DISTRICTS



DISTRICTS



These particulars, whilst believed to be accurate are set out as a general outline only for guidance and do not constitute any part of an offer or contract. Intending purchasers should not rely on them as statements of representation of fact, but must satisfy themselves by inspection or otherwise as to their accuracy. No person in this firm's employment has the authority to make or give any representation or warranty in respect of the property.