



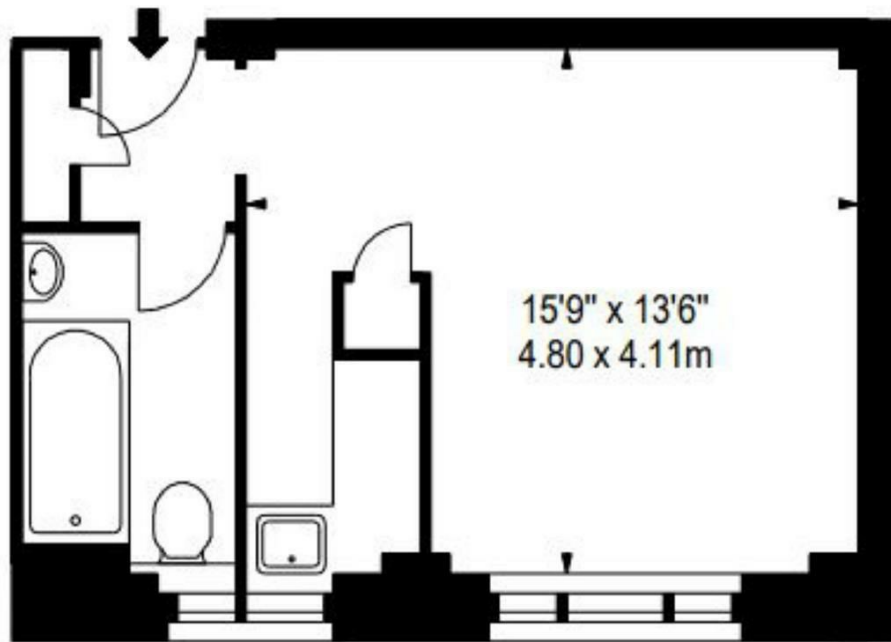
## HILL STREET W1J

£630 PER WEEK

A well proportioned studio apartment on the second floor of this beautiful red brick building, situated in the heart of London's fashionable Mayfair, neighbouring the famous Berkeley Square. The apartment comprises a large living room area, modern bathroom and a unique kitchenette.

Hill Street, benefits from spacious living accommodation, lift service, on-site building manager, and is nestled conveniently between two of London's parks Hyde Park and Green Park. Benefitting from great transport links including Green Park, Bond Street and Marble Arch stations - all within a short stroll away.

**PMP** | INTERNATIONAL



SECOND FLOOR



Energy Efficiency Rating		Current	Potential
Very energy efficient - lower running costs			
(92 plus) A			
(81-91) B			
(69-80) C		72	79
(55-68) D			
(39-54) E			
(21-38) F			
(1-20) G			
Not energy efficient - higher running costs			
England & Wales		EU Directive 2002/91/EC	

Agents Note: Whilst every care has been taken to prepare these particulars, they are for guidance purposes only. All measurements are approximate and are for general guidance purposes only and whilst every care has been taken to ensure their accuracy, they should not be relied upon and potential buyers/tenants are advised to recheck the measurements

London  
PMP International  
94 Belsize Lane  
Belsize Park  
London  
NW3 5BE

020 7701 2878  
info@pmpi.co.uk  
www.pmpi.co.uk

**PMP** | INTERNATIONAL