



CHURCHFIELDS AVENUE WEYBRIDGE KT13
£2,200 PER MONTH AVAILABLE 11/05/2026




Hamptons

THE HOME EXPERTS

{ THE PARTICULARS

Churchfields Avenue Weybridge
KT13

£2,200 Per Month
Unfurnished

 2 Bedrooms
 2 Bathrooms
 1 Reception

Features

- Two Bedrooms, - Ground Floor, -
Underground Parking, - Two Parking
Spaces, - Private Terrace, - Communal
Gardens, - Council Tax Band F

Council Tax

Council Tax Band F

Hamptons
26 High Street
Weybridge, KT13 8AB
01932639001
WeybridgeLettings@hamptons.co.uk
www.hamptons.co.uk

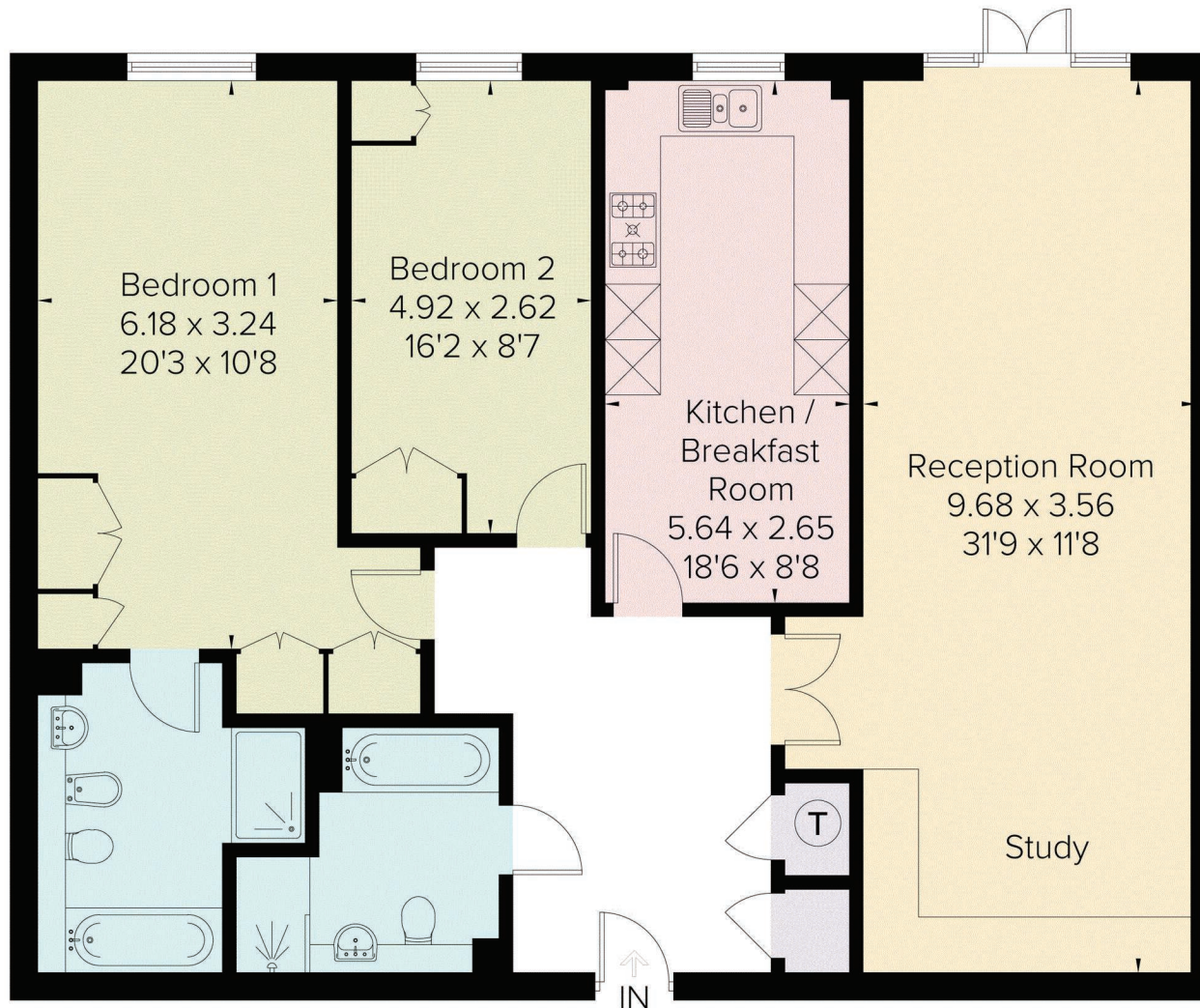
{ A TWO BEDROOM GROUND FLOOR APARTMENT IN WEYBRIDGE

The Property

A well-presented two bedroom ground floor apartment located in a popular block including underground parking with 2 allocated spaces. The spacious accommodation comprises of large hallway with ample storage, family bathroom, modern kitchen with fitted appliances, large living room with direct access onto the communal garden and two double bedrooms with en-suite to the master. Further benefits include short distance of 0.5 miles to Weybridge Station and well maintained communal gardens.



Approximate Area = 121.5 sq m / 1308 sq ft
Including Limited Use Area (0.5 sq m / 5 sq ft)



Surveyed and drawn in accordance with the International Property Measurement Standards (IPMS 2: Residential)
fourwalls-group.com 229638

For Clarification

We wish to inform prospective tenants that we have prepared these particulars as a general guide and they have been confirmed as accurate by the landlord. We have not verified permissions, nor carried out a survey, tested the services, appliances and specific fittings. Room sizes are approximate and measurement figures rounded: they are taken between internal wall surfaces and therefore include cupboards/shelves, etc. Accordingly, they should not be relied upon for

carpets and furnishings. It should also be noted that all fixtures and fittings, carpeted, curtains/blinds, kitchen equipment and garden statuary, whether fitted or not, are deemed removable by the landlord unless specifically itemised with these particulars. Please enquire in office or on our website for details on holding deposit and tenancy deposit figures.

