



Beverley House, Beverley Court, Shipton Road, York £595,000

A luxurious three bedroom, two bathroom, first floor apartment, sympathetically converted within this iconic dwelling, forming part of the brand new Beverley court being found along this popular leafy suburban street, close to York city centre and Homestead Park.



A splendid converted apartment offering luxury living accommodation stretching in excess of 1300 sqft with allocated parking

The original Beverley House has been regenerated to its former glory as an impressive Victorian villa. Beverley House was built in the late 19th century and served as the family home for the general manager of the Rowntree's factory. Over the years, it also housed the offices for the Joseph Rowntree Trust and the Local Government Ombudsman. It is the centrepiece of the majestic Beverley Court development.

This apartment presents a faultless blend of historic charm and modern luxury, offering character as well as high-specification stylish fittings. Located on the ground floor and entered from a communal hallway, the apartment is accessible by either stairs or lift. Within the apartment, you are welcomed into a spacious entrance hall finished with impressive Camaro herringbone flooring, video entry system and with doors leading to the further accommodation.

The standout space is undoubtedly the stunning kitchen/dining room. As the apartment features amazingly high ceilings throughout, this is an impressive open space, offering a high-specification kitchen and ample space for a dining area as well as an informal seating area. The kitchen itself comprises luxury Sheraton shaker-style cabinets with antique brass handles, quartz worktops and upstands in Vienna Gold, with a range of integrated NEFF appliances and opulent central island. A separate living room presents a sizeable yet cosy room, a perfect space to take a few moments to relax.

The apartment boasts three generously sized bedrooms. The master bedroom sits to the front of the apartment and boasts fitted wardrobes and a sizeable sash window, allowing for an abundance of natural light flow. A highlight of the master suite is the luxury en-suite shower room, comprising a glass shower enclosure, heated towel rail, low flush WC and featuring Villeroy & Boch sanitaryware and vanity unit with hand wash basin. Motion sensor night lights and underfloor heating contribute to the high-end luxurious feel.

Two further bedrooms both present spacious double bedrooms and offer versatility to the occupier, with one currently utilised as a snug, but could also be a great space for a home office.

The house bathroom continues the elegant interior of the apartment, similar to that found in a luxury hotel with a distinct feeling of grandeur. The bathroom suite comprises the same impressive fittings as in the master en-suite, but also with the added benefit of a feature bath with integrated hand shower.

Completing the internal space in the apartment is a utility room with storage and space and plumbing for appliances, as well as a separate store room.

The apartment comes with an allocated parking space, and access to a lovely communal garden within the iconic development. Additional allocated parking available by negotiation

Beverley Court is an exciting new residential development of a well-known York building located on Shipton Road. Just one mile from the centre of York and overlooking Homestead Park, Beverley Court offers a stunning location for modern living.

The development is an exemplary project, blending the fully modernised grand Victorian villa with the fabulous bespoke new build homes.

Beverley Court

Beverley Court is an exciting new residential development of a well-known York building located on Shipton Road. Just one mile from the centre of York and overlooking Homestead Park, Beverley Court offers a stunning location for modern living. The original Beverley House was built in the late 19th century and served as the family home for the general manager of the Rowntree's factory. Over the years, it also housed the offices for the Joseph Rowntree Trust and the Local Government Ombudsman.

The Beverley Court development pays homage to its rich local history and the pioneering Rowntree family, by retaining the historic name of Beverley House and naming the three new buildings Appleton House, Seebomh Lodge and Homestead View.

The development is an exemplary project, blending the fully modernised grand Victorian villa with the fabulous bespoke new build homes.

Specification

With generous ceiling heights and large windows, the apartments across Beverley Court are spacious, modern and filled with lots of natural light. Bathrooms and kitchens are finished to a high standard of luxury specification and quality flooring finishes run throughout.

Kitchens

- Sheraton shaker style cabinets in Beverley House with antique brass handles and slab style cabinets (no handles) in the new builds. Both styles in a limestone colour.
- Quartz worktops and upstands in Vienna Gold.
- Neff induction hobs with Neff standard ovens and separate microwaves or combi ovens and Bosch fridge freezer and dishwasher.
- Gunmetal 4-in-1 hot water tap and gunmetal undermount 1.5 bowl sink.
- Separate utility.

Bathrooms/en-suites/cloakrooms

- Villeroy & Boch sanitaryware with vanity units.
- Feature baths with integrated hand showers.
- Feature glass shower enclosures.
- Hansgrohe chrome taps and shower heads.
- Heated chrome towel rails.
- Shaver points.
- Ceramic stone-coloured tiles on walls, with decorative highlights.
- Motion sensor night lights in en- suites.
- Underfloor heating in bathrooms and ensuites.

General

- Gas central heating with A-rated boilers/combi boilers with underfloor heating and radiators (Beverley House).
- Traditional style internal doors, door frames and skirtings for Beverley House. Contemporary style internal doors, door frames and skirtings for new builds.
- Hampstead Thea door handles in antique bronze finish.
- Switches and sockets in satin brass finish
- Combination of LED downlights and pendant lighting.
- Video door entry system.
- IGByte superfast broadband.

Floor finishes

- Camaro naked blonde oak LVT flooring in herringbone pattern in hallways, open plan living rooms, utilities, cloakrooms, main bathrooms and en-suites.
- Ivory carpet in bedrooms and separate lounges.

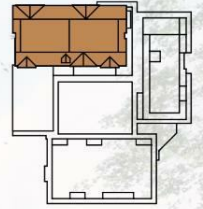
Imagery Disclaimer:

Please note that some photographs may have been digitally enhanced using CGI and AI-generated furniture to assist with visualisation. These images are for marketing purposes only and may not reflect the property's exact appearance, contents, or condition at the time of viewing.



Apartment 7 : First Floor

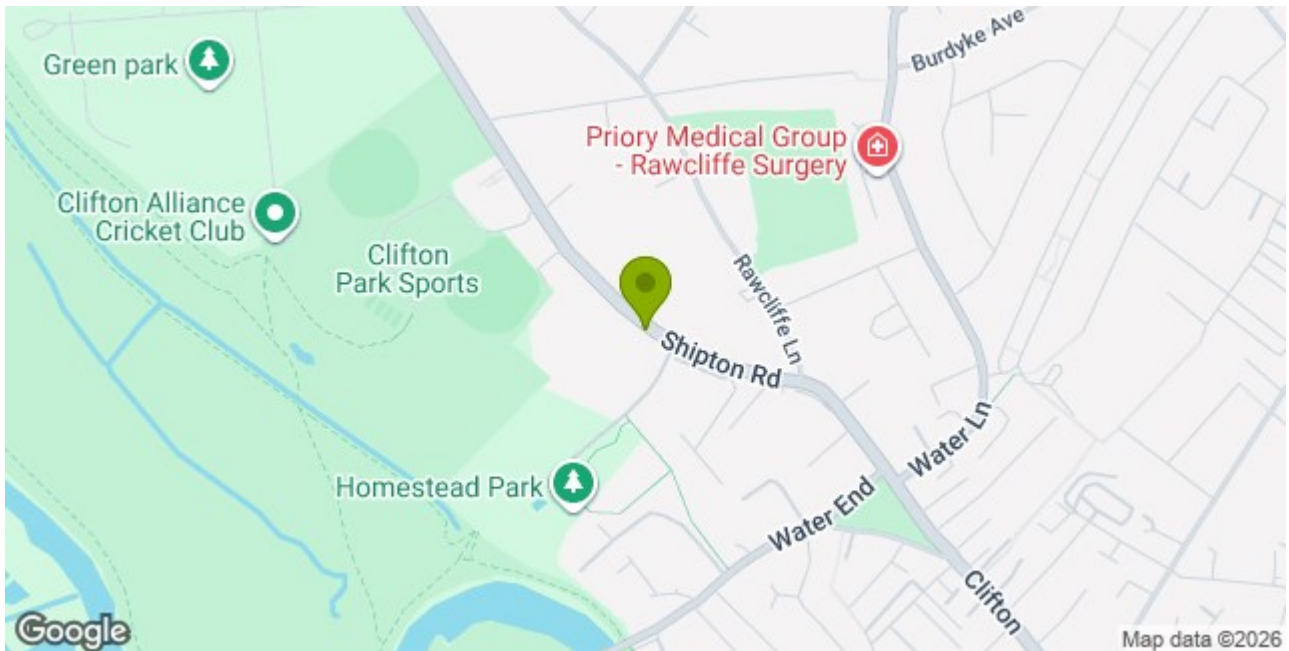
Key Plan



Gross internal area:
123m² (1324ft²)



The specifications contained on this plan is intended to provide an accurate and comprehensive description. However, measurements and layouts may be subject to change. The developer reserves the right to make alterations to the specifications without prior notice.



Map data ©2026

Stephensons

York	01904 625533
Knaresborough	01423 867700
Selby	01757 706707
Boroughbridge	01423 324324
Easingwold	01347 821145
York Auction Centre	01904 489731
Haxby	01904 809900

Partners

- J F Stephenson MA (cantab) FRICS FAAV
- I E Reynolds BSc (Est Man) FRICS
- R E F Stephenson BSc (Est Man) MRICS FAAV
- N J C Kay BA (Hons) pg dip MRICS
- O J Newby MNAEA
- J E Reynolds BA (Hons) MRICS
- R L Cordingley BSc FRICS FAAV
- J C Drewniak BA (Hons)

Associates

N Lawrence

