

FREEHOLD



20 LIME STREET, BARROW-IN-FURNESS, LA14 5EF

£110,000

FEATURES

- Superior Mid Terrace
- Highly Popular Location
- Close To Shops, Schools & Amenities
- UPVC DG & Electric Central Heating System
- Modern Contemporary Decor Throughout
- Lounge & Dining Room
- Modern Kitchen & Utility Area
- Wet Room & House Bathroom
- Two Double Bedrooms
- Early Inspection Advised



We are delighted to bring to the market this fantastic, recently renovated mid-terrace home, ideally situated in a popular and convenient location. Deceptively spacious throughout, the property benefits from uPVC double glazing and an electric central heating system, and would be fully appreciated upon internal inspection. Finished to a high standard, the home features modern décor, contemporary LED lighting, and quality fixtures throughout. The accommodation briefly comprises of an entrance vestibule, a comfortable lounge, separate dining room, and a modern fitted kitchen with a range of units, along with a useful utility area and a stylish ground floor wet room. To the first floor, there are two generously sized bedrooms and a well-appointed Jack and Jill four-piece bathroom. This impressive home will appeal to a variety of buyers and early internal viewing is strongly recommended to fully appreciate the space, quality, and finish on offer.

Accessed through a PVC door into:

ENTRANCE VESTIBULE

Entrance door and door to:

LOUNGE

Understairs storage, modern contemporary décor, electric radiator and uPVC double glazed window to the front. Door to:

MID VESTIBULE

Stairs to first floor and door to:

DINING ROOM

UPVC double glazed external door to the rear yard and electric radiator. Open to:

KITCHEN

Fitted with a range of base, wall and drawer units with wooden worktop over incorporating stainless steel sink with drainer, mixer tap and splash back tiling. Electric hob, electric oven and space for a fridge. Door to:

UTILITY AREA

External door to rear yard, plumbing for a washing machine and space for an American style fridge/freezer. Door to:

WET ROOM

Modern two-piece suite comprising of a WC and wash hand basin, draining floor, tiling and uPVC double glazed window to the side.

FIRST FLOOR LANDING

Doors to two bedrooms and a shared passageway from both bedrooms to the bathroom.

BEDROOM

UPVC double glazed window to the front and electric radiator.

BEDROOM

Electric radiator and uPVC double glazed window to the rear.

PASSAGEWAY

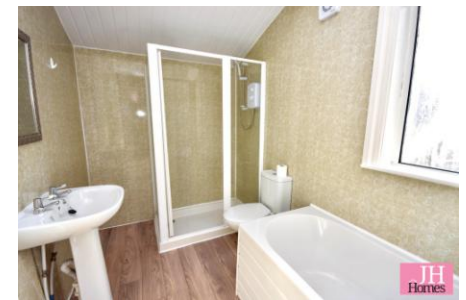
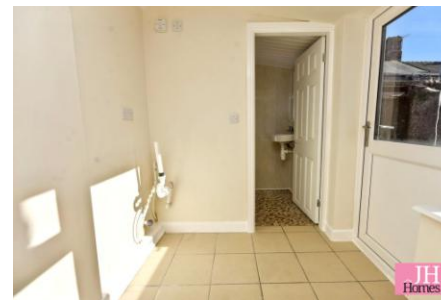
Cupboard housing electric central boiler for the heating and hot water systems. Door to:

BATHROOM

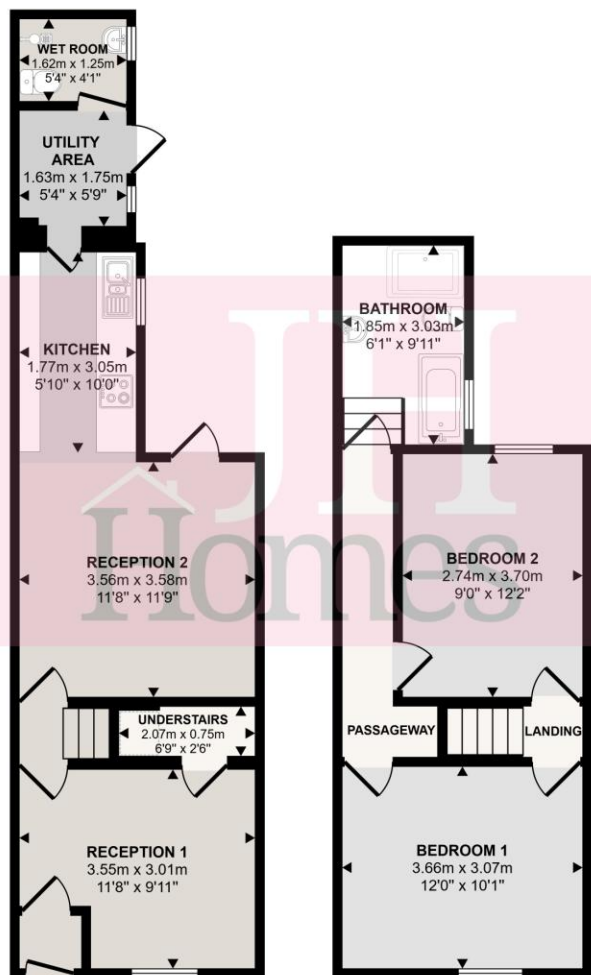
Four-piece suite in white comprising of WC, wash hand basin, shower cubicle bath, extractor fan and uPVC double glazed window to the side.

EXTERIOR

Yard to the rear with access to the rear service lane.



Approx Gross Internal Area
73 sq m / 790 sq ft



Ground Floor
Approx 39 sq m / 419 sq ft

First Floor
Approx 35 sq m / 372 sq ft

☐ Denotes head height below 1.5m

This floorplan is only for illustrative purposes and is not to scale. Measurements of rooms, doors, windows, and any items are approximate and no responsibility is taken for any error, omission or mis-statement. Icons of items such as bathroom suites are representations only and may not look like the real items. Made with Made Snappy 360.

Call us on

01229 445004

contact@jhhomes.net

www.jhhomes.net/properties

GENERAL INFORMATION

TENURE: Freehold

COUNCIL TAX: A

LOCAL AUTHORITY: Westmorland and Furness Council

SERVICES: Mains drainage, electric, water are all connected. Electric heating

DIRECTIONS:

On entering Barrow along Abbey Road pass through the Strawberry traffic lights and Cheltenham Street lights, and at the next set turn right into Ainslie Street. Continue straight on at the traffic lights into Schneider Road, and before the row of shops turn right into Beech Street, with immediate left and follow the road into Lime Street.

The property can be found by using the following "What Three

Words": <https://w3w.co/enter.turned.wisdom>

Score	Energy rating	Current	Potential
92+	A		
81-91	B		84 B
69-80	C		
55-68	D		
39-54	E	42 E	
21-38	F		
1-20	G		

Agents Note: Whilst every care has been taken to prepare these particulars, they are for guidance purposes only. All measurements are approximate and are for general guidance purposes only and whilst every care has been taken to ensure their accuracy, they should not be relied upon and potential buyers are advised to recheck the measurements.

