



Edgarley Terrace, SW6

£1,950 Per calendar month

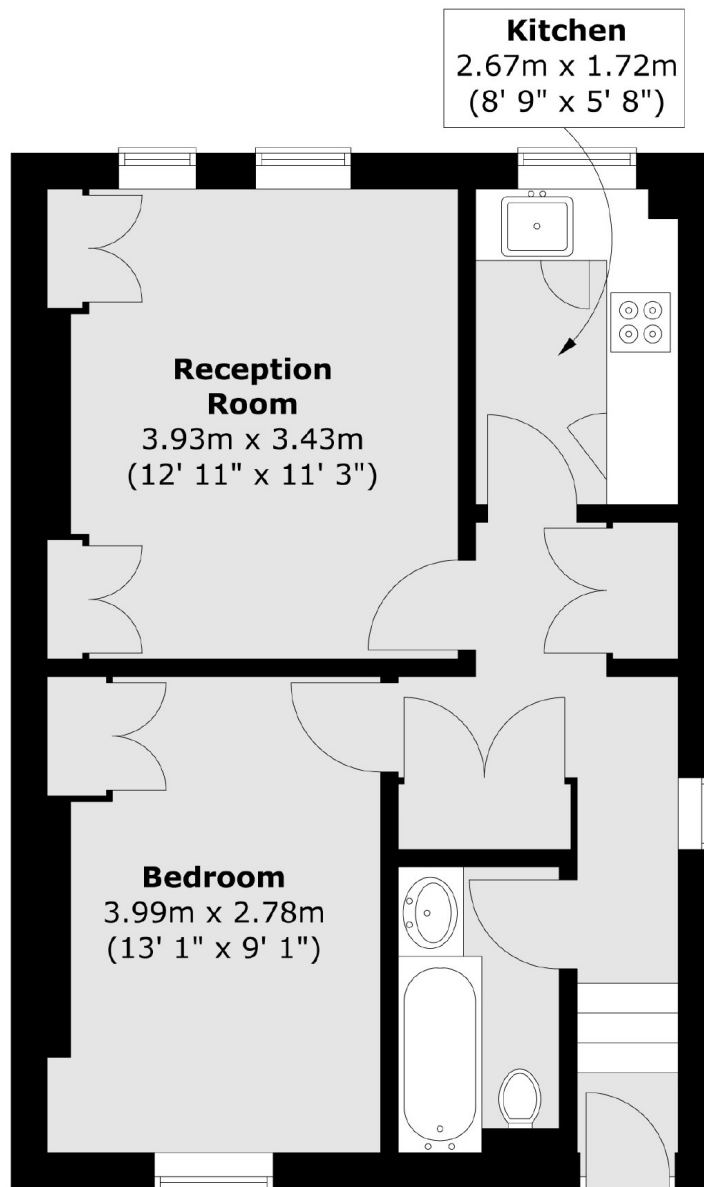
A fantastic apartment offering contemporary living accommodation in an idyllic location. The apartment is situated on the second floor, flooded with natural light and presented in excellent condition.

Located in the popular Munster Village area which offers a good choice of shops, transport links into the city and moments away from the green space of Bishops Park.

Features

- Natural Light
- Separate Kitchen
- Bishops Park
- Second Floor
- Storage
- One Double Bedroom

Edgarley Terrace, London, SW6



Total area (approx.) : 43.1 sq. m (464 sq. ft)