



MK
ESTATES

133 Palmerston Road, Bournemouth

Guide Price £190,000

133 Palmerston Road

Bournemouth

Council Tax band: C

Tenure: Freehold

EPC Energy Efficiency Rating: E

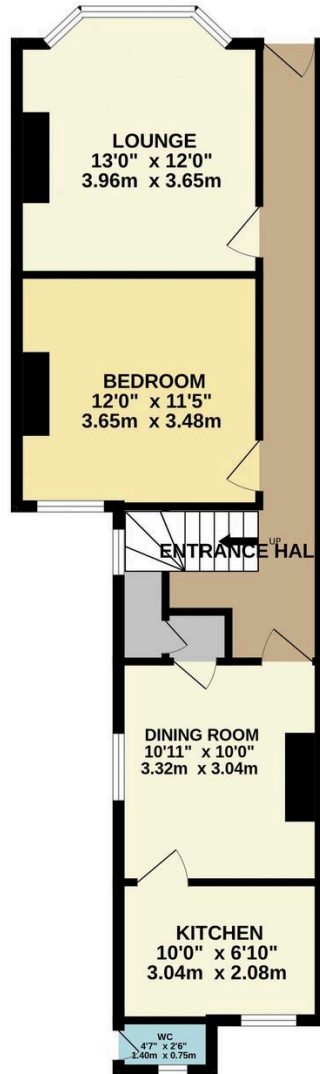
EPC Environmental Impact Rating: E

- Auction Date - Wednesday 22nd July 2026
- Buyers Fee Applies
- Auction Pack Available On Request
- Spacious Freehold House
- Four Bedroom & Two Reception Rooms
- Family Bathroom & Downstairs Outside WC
- Courtyard Garden & Garage
- Catchment For Several Primary/Secondary Schools
- Easy Reach To Boscombe & Southbourne High Street
- Requires Modernisation

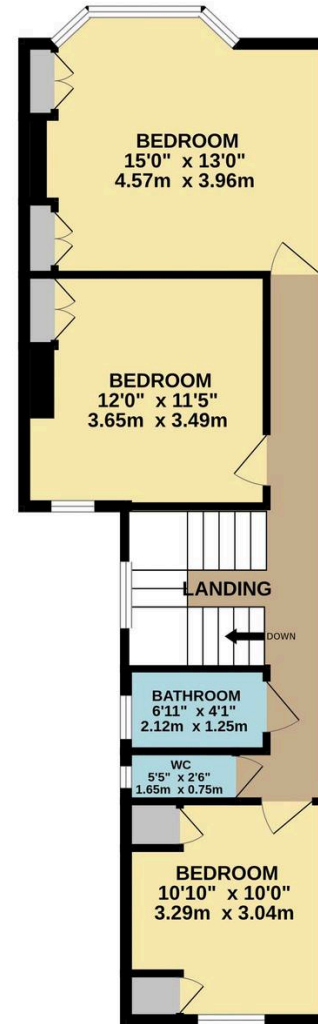




GROUND FLOOR
601 sq.ft. (55.9 sq.m.) approx.



1ST FLOOR
600 sq.ft. (55.8 sq.m.) approx.



TOTAL FLOOR AREA: 1201 sq.ft. (111.6 sq.m.) approx.

Whilst every attempt has been made to ensure the accuracy of the floorplan contained here, measurements of doors, windows, rooms and any other items are approximate and no responsibility is taken for any error, omission or mis-statement. This plan is for illustrative purposes only and should be used as such by any prospective purchaser. The services, systems and appliances shown have not been tested and no guarantee as to their operability or efficiency can be given.

Made with Metropix ©2026