

# 27 Queens Road

North Weald, Epping

Welcome to Queens Road. Awash with light and space with two bathrooms, an open plan kitchen/diner, plus a beautifully spacious private rear garden, this much-loved family home is a great place to lay down roots.

Council Tax band: D

Tenure: Freehold

- Private garden backing onto allotment
- Two bathrooms
- Open plan kitchen / diner
- Utility Room
- Short drive to Epping & the M11
- St Andrews Primary school catchment
- Opportunity to extend (STP)



**Entrance Hallway**

**Family Room**

13' 5" x 8' 10" (4.10m x 2.70m)

**Kitchen**

17' 9" x 14' 9" (5.40m x 4.50m)

**Dining Room**

23' 4" x 13' 5" (7.10m x 4.10m)

**Utility Room**

10' 2" x 5' 7" (3.10m x 1.70m)

**Ground floor shower room**

**Bedroom**

13' 5" x 10' 6" (4.10m x 3.20m)

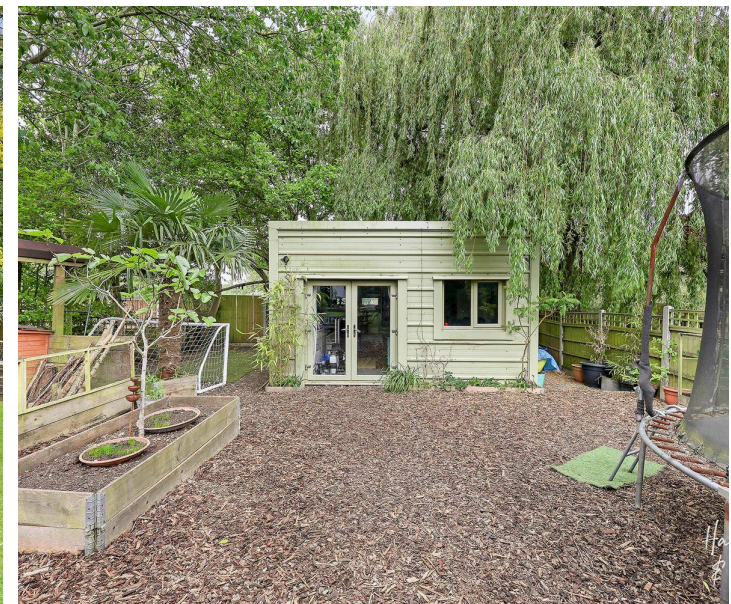
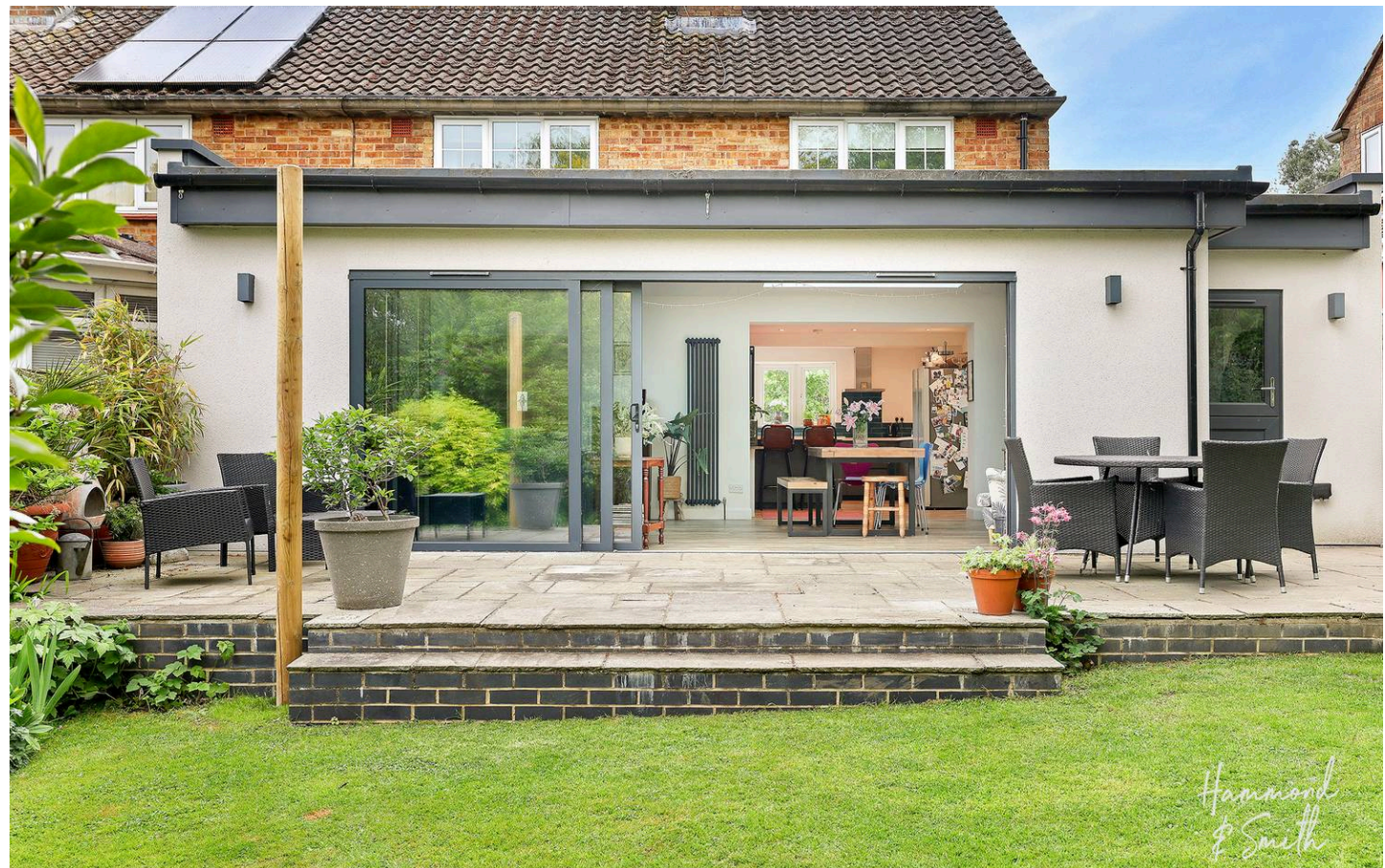
**Bedroom**

11' 2" x 9' 10" (3.40m x 3.00m)

**Bedroom**

9' 6" x 7' 3" (2.90m x 2.20m)

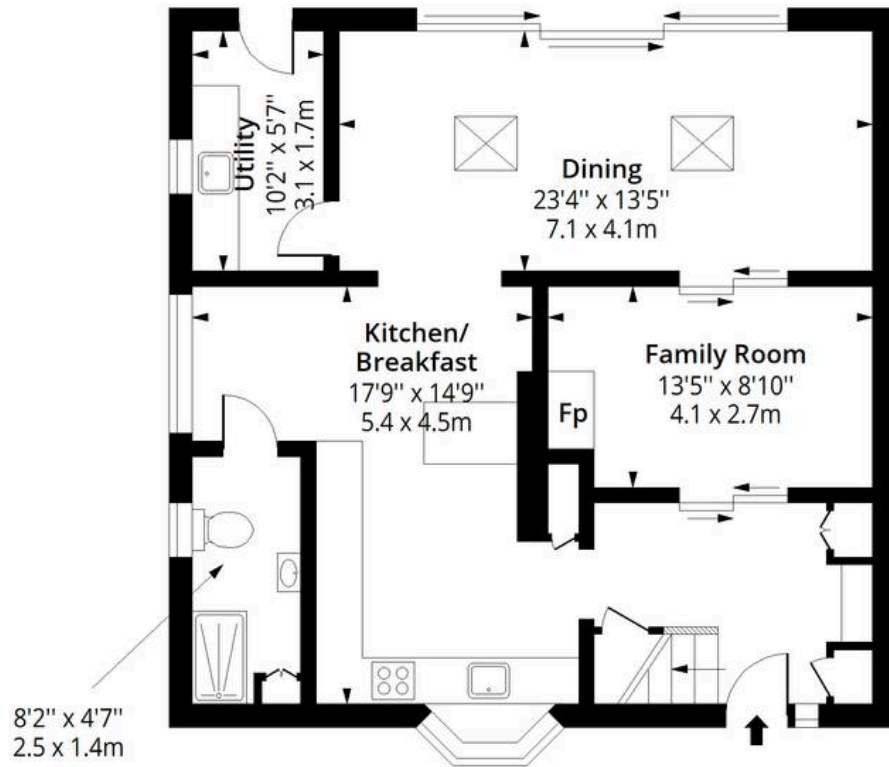
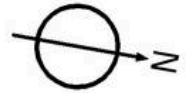
**Bathroom**





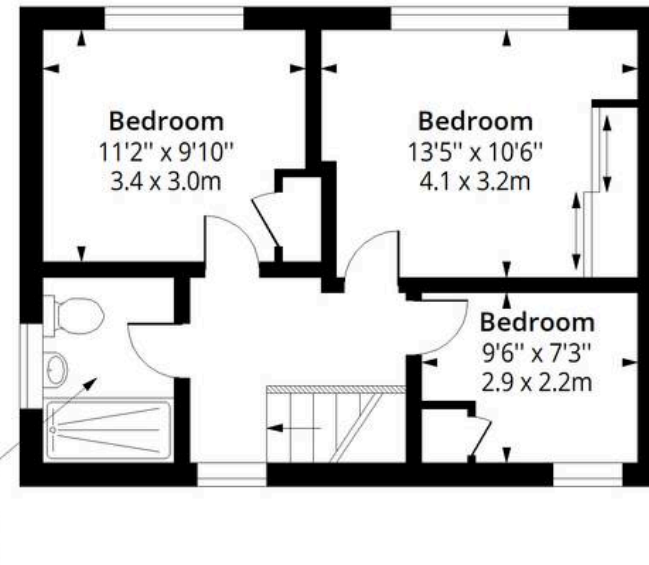
# Queens Road CM16

Approx. Gross Internal Area 1295 Sq Ft - 120.31 Sq M



## Ground Floor

Floor Area 831 Sq Ft - 77.20 Sq M



## First Floor

Floor Area 464 Sq Ft - 43.11 Sq M



Measured according to RICS IPMS2. Floor plan is for illustrative purposes only and is not to scale. Every attempt has been made to ensure the accuracy of the floor plan shown, however all measurements, fixtures, fittings and data shown are an approximate interpretation for illustrative purposes only. 1 sq m = 10.76 sq feet.

Date: 12/5/2026