



jordan fishwick

MANCHESTER
159 Withington Road



159 Withington Road, Manchester, M16 8RP

£1,090 Per Calendar Month



The Property

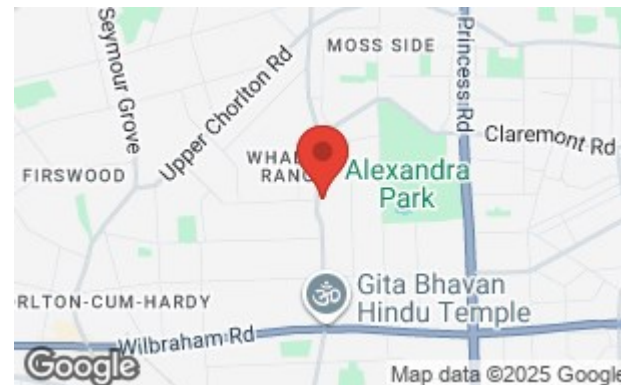
*** AVAILABLE DECEMBER *** A first floor, two bedroom apartment located within this highly desirable purpose built complex. Close by to Whalley Range and Chorltons amenities. The property is suited to a single occupant, couple and families. The accommodation comprises of living room, fully fitted kitchen, one generous double bedroom, with a second smaller double room which could also be used as a home office. The shower room is fitted with a walk in shower cubicle. Available furnished. Unallocated gated on-site parking to the rear, subject to availability. Additional on street parking available close by without the need for a permit from the council, at the time of writing. Contact our Didsbury office to arrange a viewing.

View our Virtual Tour Here - <https://www.youtube.com/shorts/6KvfUma6TT0>

EPC Rating C // Council Tax Band A

Directions

M16 8RP



- Available December
- Two Bedrooms
- First Floor Apartment
- One Double / Second Smaller Room
- Furnished
- Ideal for Single Occupants or Couples
- Great Location of Whalley Range
- Gated On Site Parking
- Council Tax Band A
- EPC Rating C

Postcode - M16 8RP

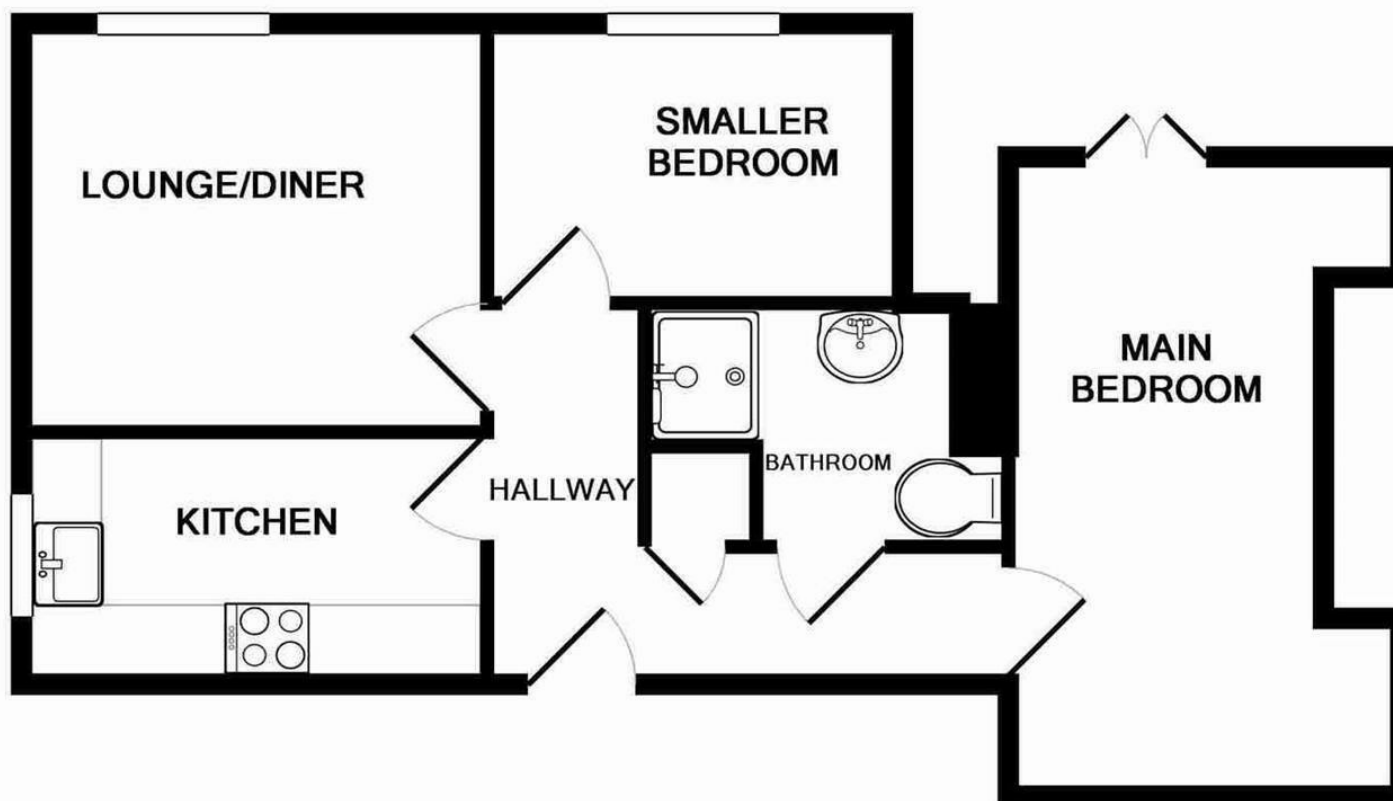
EPC Rating - C

Floor Area - sq ft

Local Authority - Manchester

Council Tax - A





Whilst every attempt has been made to ensure the accuracy of the floor plan contained here, measurements of doors, windows, rooms and any other items are approximate and no responsibility is taken for any error, omission, or mis-statement. This plan is for illustrative purposes only and should be used as such by any prospective purchaser. The services, systems and appliances shown have not been tested and no guarantee as to their operability or efficiency can be given

Made with Metropix ©2016



These particulars are believed to be accurate but they are not guaranteed and do not form a contract. Neither Jordan Fishwick nor the vendor or lessor accept any responsibility in respect of these particulars, which are not intended to be statements or representations of fact and any intending purchaser or lessee must satisfy himself by inspection or otherwise as to the correctness of each of the statements contained in these particulars. Any floorplans on this brochure are for illustrative purposes only and are not necessarily to scale.

Offices also at: Wilmslow, Macclesfield, Hale, Sale, Chorlton, Glossop, Manchester & Salford

757-759 Wilmslow Road, Didsbury Village, Manchester

0161 445 4480

didsbury@jordanfishwick.co.uk
www.jordanfishwick.co.uk