



## BEAUFORT SQUARE, NW9

£8,000 pcm

This breath taking four double bedroom penthouse apartment is situated on the 16th and 17th floor of a prestigious Colindale development. The property has multiple terraces with greenery and underground parking.

- Four Bedroom
- Five Bathrooms
- Underground Parking
- Fully Furnished
- Split Over Two Floors
- Wood Flooring



## ABOUT THE HOME

We are proud to present this stunning penthouse apartment, situated within one of the most prestigious developments in Colindale. Spread over the 16th and 17th floors, this apartment offers wide hallways and stairwells, spacious bedrooms, ample storage and an array of outside space spread over the vast number of terraces and balconies.

The kitchen area has sliding doors which have been installed for comfort and privacy from the living room. With floor to ceiling windows throughout, you benefit from fantastic views across London, wherever you are within the property. For convenience, there is access to two parking spaces and also a private garage, which can fit up to two cars.

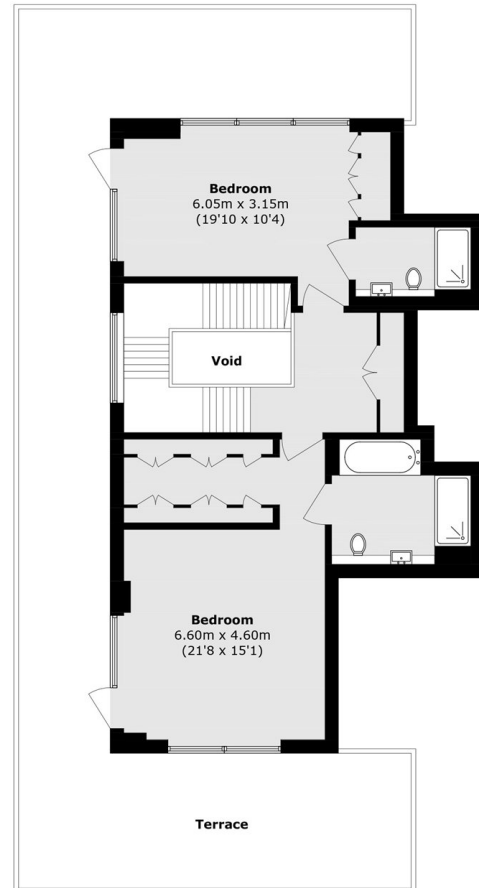
The property is ideally situated in the heart of Colindale, allowing for easy access in and out of Central London, while Colindale station is only 0.6 miles away.







**Sixteenth Floor**



**Seventeenth Floor**

Total area (approx.): 248.7 sq. m (2677.0 sq. ft)  
Balcony area (approx.): 50.5 sq. m (543.6 sq. ft)  
Terrace area (approx.): 83.9 sq. m (903.1 sq. ft)  
(Excluding Void)

**LIFE RESIDENTIAL**

203 Trentham Court, Victoria  
Road, London, W3 6BT  
Sales: 020 3668 1112  
Lettings: 020 3668 1111

Energy Rating: . We aim to make our particulars both accurate and reliable. However they are not guaranteed; nor do they form part of an offer or contract. If you require clarification on any points then please contact us, especially if you're traveling some distance to view. Please note that appliances and heating systems have not been tested and therefore no warranties can be given as to their good working order.