



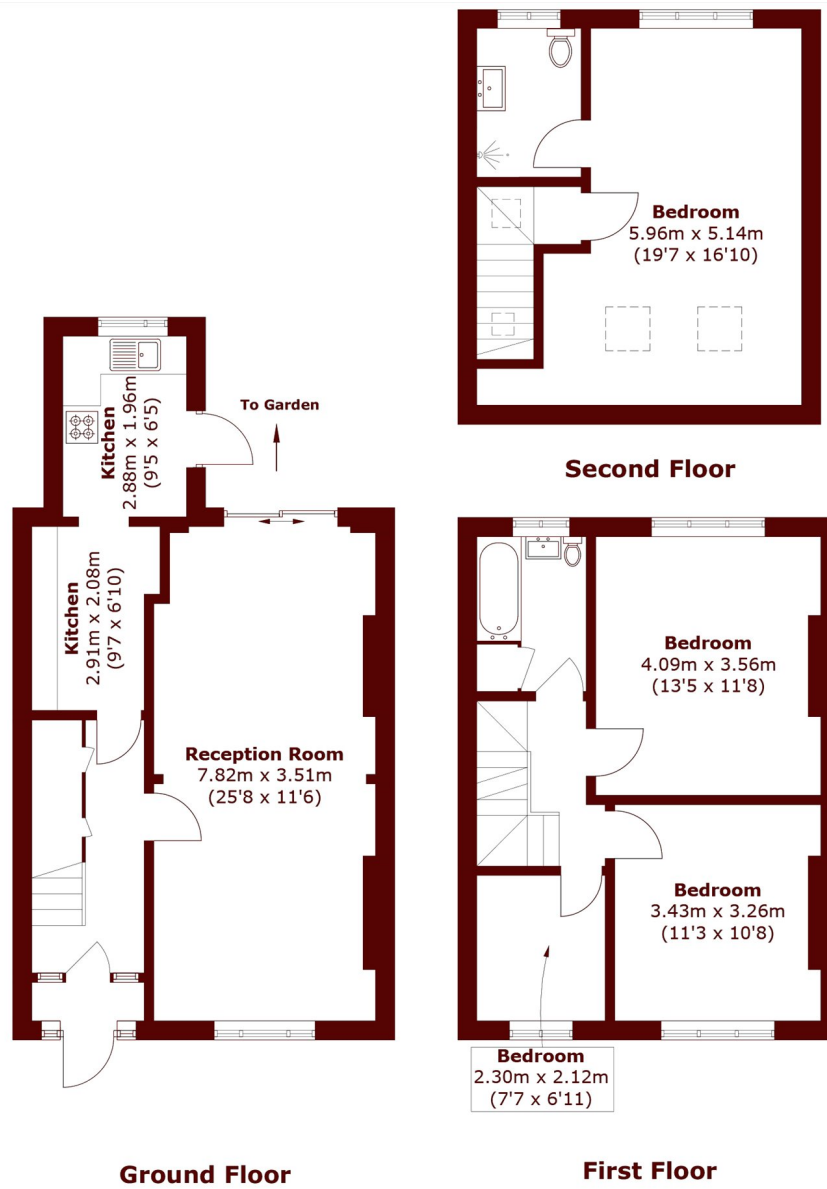
BALLARDS ROAD, NW2

£650,000

This attractive mid-terraced house offers an excellent opportunity for families, featuring four bedrooms, two bathrooms, a spacious double reception room, and a separate kitchen opening directly onto the private

Terraced house

STEP INSIDE BALLARDS ROAD



Total area (approx.): 121.3 sq. m (1,305.5 sq. ft)

Willesden Green
020 8451 0420

Energy Rating: C We aim to make our particulars both accurate and reliable. However, they are not guaranteed; nor do they form part of an offer or contract. If you require clarification on any points then please contact us, especially if you're traveling some distance to view. Please note that appliances and heating systems have not been tested and therefore no warranties can be given as to their good working order

MARSH &
PARSONS