



Dan Thomas  
— & Co. —



**Brickfield Farm Close, Longfield, DA3 7GA**

Longfield

Guide Price

**£350,000**

**Bedrooms: 2 | Bathrooms: 1 | Receptions: 1**

**\*\*\* GUIDE PRICE £350,000 - £375,000 \*\*\***

A well presented, two bedroom bungalow, located on the popular, Billings built, Brickfield Farm Estate. Offered to market with NO FORWARD CHAIN and available for buyers of retirement age.

Positioned well for the village amenities within Longfield, the bungalow will be sold with the benefit of a brand new, 125 year lease upon completion. There are modest service charges and there is zero ground rent.

The property offers an open-plan kitchen-living-dining arrangement, with French doors to a small, courtyard style garden at the rear. This extends on to the communal gardens.

There are two double bedrooms, as well as a modernised shower room with large, walk-in shower.

Further benefits include resident parking, double glazing throughout and underfloor heating, powered by a ground-sourced heat pump.

Walking distance to Longfield village, where amenities include a Waitrose supermarket, a Post-Office, a Co-Op, a pharmacy, plus doctors and dental surgeries. The mainline station also provides frequent, direct services to London Victoria, Bromley South, and the Kent coast.

Tenure: Leasehold

Lease length: Brand new 125 year lease upon completion

Service Charges: £1300 per annum

Ground Rent: £0

Service Charges:

Council Tax band: D



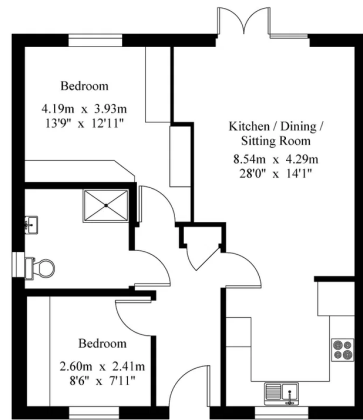






19 Heaver Court

Gross Internal Area : 67.3 sq.m (724 sq.ft.)



Ground Floor



For Identification Purposes Only.  
© 2026 Trooplan (UK) Limited (01892) 614 881

