



**The Orchard, Chase Vale  
Burntwood, WS7 3GE**

**Offers in the Region Of £375,000**

# Chase Vale

Offers in the Region Of £375,000



\*NO CHAIN\*

\*IMMACULATE DETACHED PROPERTY IN SOUGHT AFTER LOCATION\*

Welcome to The Orchard, a beautifully presented and immaculately kept three bedroom detached family home in a quaint location in Burntwood.

Houses like this very rarely present themselves to market and internally this home features a welcoming entrance hall, guest W/C, large living room, separate dining area, open plan breakfast kitchen finished to a lovely specification and having plenty of storage.

Stairs lead to the first floor where you will find three generous bedrooms, an en suite to master and a modern bathroom.

Outside is a well manicured and privately enclosed garden, perfect for any growing family or keen gardener. To the fore is a multi vehicle driveway and single garage.

Nearby amenities include a handful of shops, easily accessible transport links and also well regarded primary and secondary schools.

CALL NOW TO VIEW!!!









## Property Specification

NO CHAIN  
SOUGHT AFTER RARE LOCATION  
THREE BEDROOMS  
TWO RECEPTION ROOMS  
DRIVEWAY & GARAGE

Hallway

WC

Living Room 4.68m (15'4") x 3.50m (11'6")

Dining Room 3.28m (10'9") x 2.64m (8'8")

Kitchen/Diner 5.36m (17'7") x 3.93m (12'11")

Garage

Landing

Bedroom 1 3.74m (12'3") x 3.59m (11'9")

En-suite Shower Room

Bedroom 2 3.59m (11'9") x 3.03m (9'11")

Bedroom 3 2.97m (9'9") x 2.02m (6'8")

Shower Room

### Viewer's Note:

Services connected: Gas, Electric, Water, Drainage  
Council tax band: D  
Tenure: Freehold

# Floor Plan

This floor plan is not drawn to scale and is for illustration purposes only

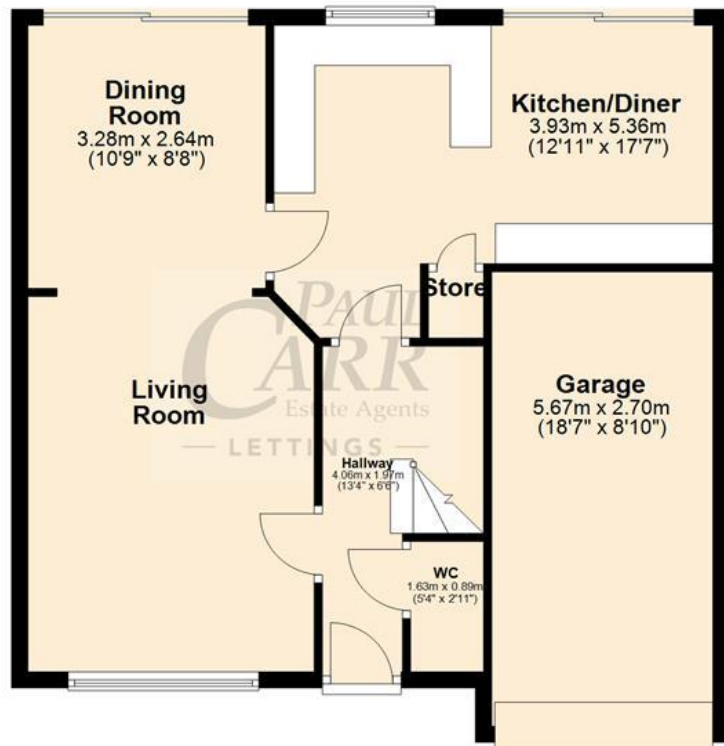
## Energy Efficiency Rating

New  
Instruction  
Awaiting  
E.P.C.

## Map Location



Ground Floor



First Floor

