



Dacres Road, Forest Hill, London



£325,000



## Key Features

- Ground floor flat
- Designated off street parking
- Scenic Surroundings
- One Double Bedroom
- Prime Location
- No onward chain
- EPC rating C
- Leasehold





A fantastic one double bedroom flat in leafy Forest Hill, SE23. Available for sale with no onward chain.

Located on the sought-after Dacres Road in the trendy area of Forest Hill, this bright and airy flat is perfect for singles or couples looking for a stylish, comfortable home. Located on the ground floor, this flat offers modern interiors and plenty of natural light. The double bedroom has a large built in wardrobe, the bathroom is well sized, modern and stylish and the extra large living room and kitchen is the real star of this property thanks to it's unique corner window unit and spacious kitchen area. The Property also directly overlooks the communal garden space and comes with it's own dedicated off street parking space! The property is just a short walk from Forest Hill Station, providing excellent transport links to Central London and beyond. You'll also benefit from the wide variety of local amenities, including trendy cafes, coffee shops, shops, and parks. Forest Hill Station (Overground and Southern trains) Regular bus services to Catford, Lewisham, and beyond.

Viewings are HIGHLY recommended for

this lovely flat, so don't miss out and arrange yours TODAY!

Council tax band: B

Tenure: Leasehold

Annual service charge: £1951.53 (2024/2025)

Annual ground rent: £250

Years left on lease: 112 years

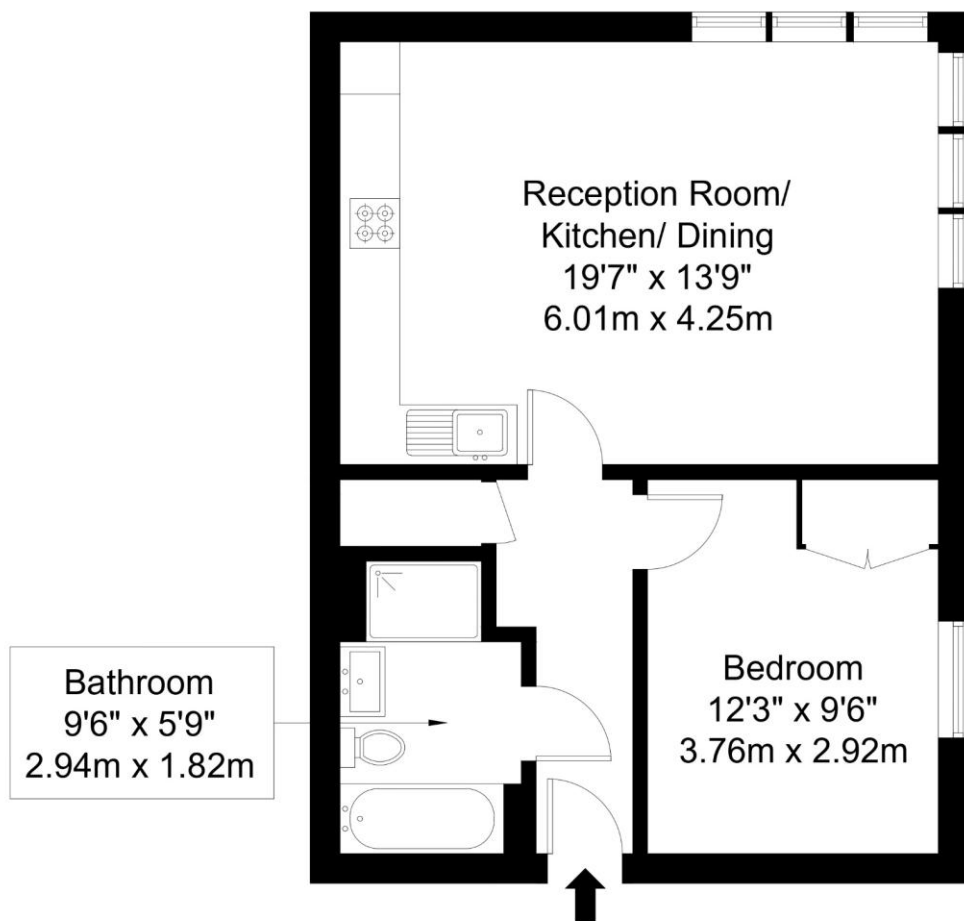
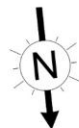






# Dacres Road, SE23 2NS

Approx Gross Internal Area = 49.04 sq m / 527 sq ft



Ground Floor

Ref :

Copyright

**B L E U**  
**P L A N**

The Floor plan is not to scale and measurements and areas shown are approximate and therefore should be used for illustrative purposes only. The plan has been prepared in accordance with the RICS code of Measuring Practice and whilst we have confidence in the information produced it must not be relied on. If there is any aspect of particular importance, you should



