



## North Side Wandsworth Common, £525,000

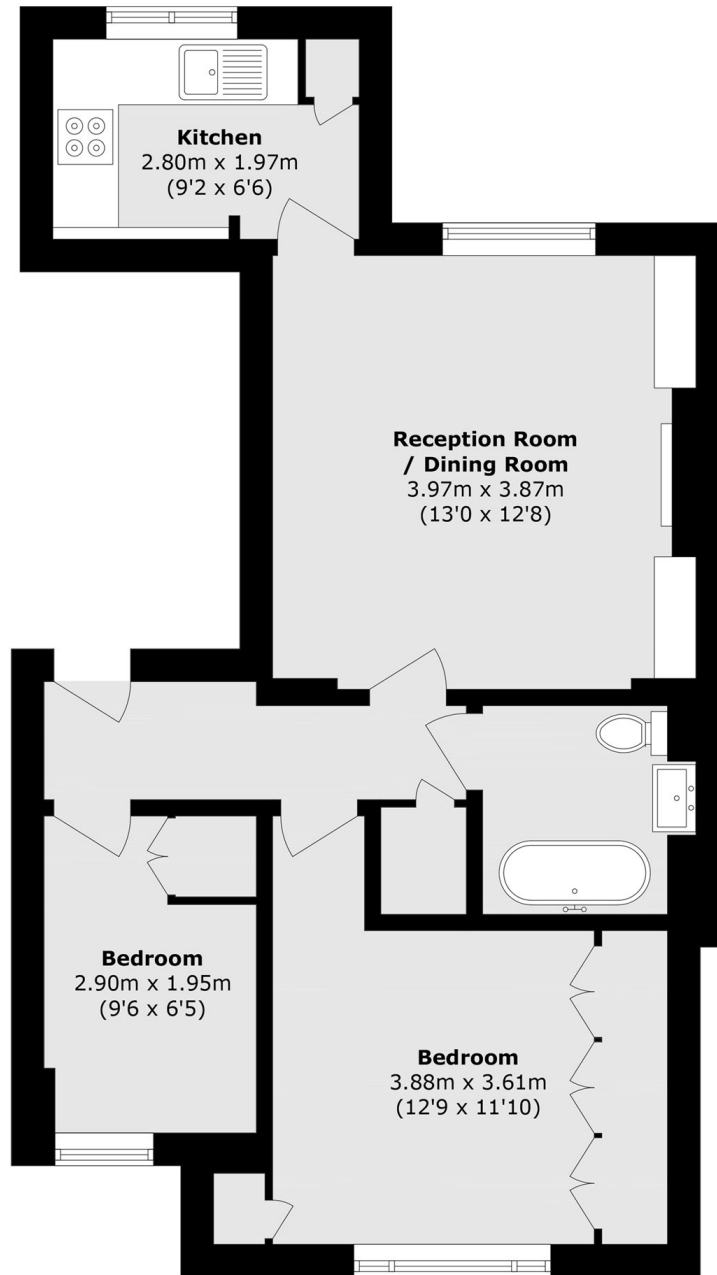
This newly refurbished period conversion includes a large reception room, kitchen, two bedrooms and modern bathroom. The property also comes with built in storage, lots of natural light and benefits from a share of freehold.

North Side Wandsworth Common is a short stroll from St. Johns Hill with its excellent selection of shops, bars and restaurants and is located close to all of the amenities of Northcote Road as well. Clapham Junction is very close offering excellent mainline transport links.

### Features

- Period Conversion
- Two Bedrooms
- Built in Storage
- Natural Light
- Share of Freehold
- Superb Location

# North Side Wandsworth Common, London, SW18



Total area (approx.): 48.6 sq. m (523.1 sq. ft)