



Maitland Park Road, NW3

£400,000

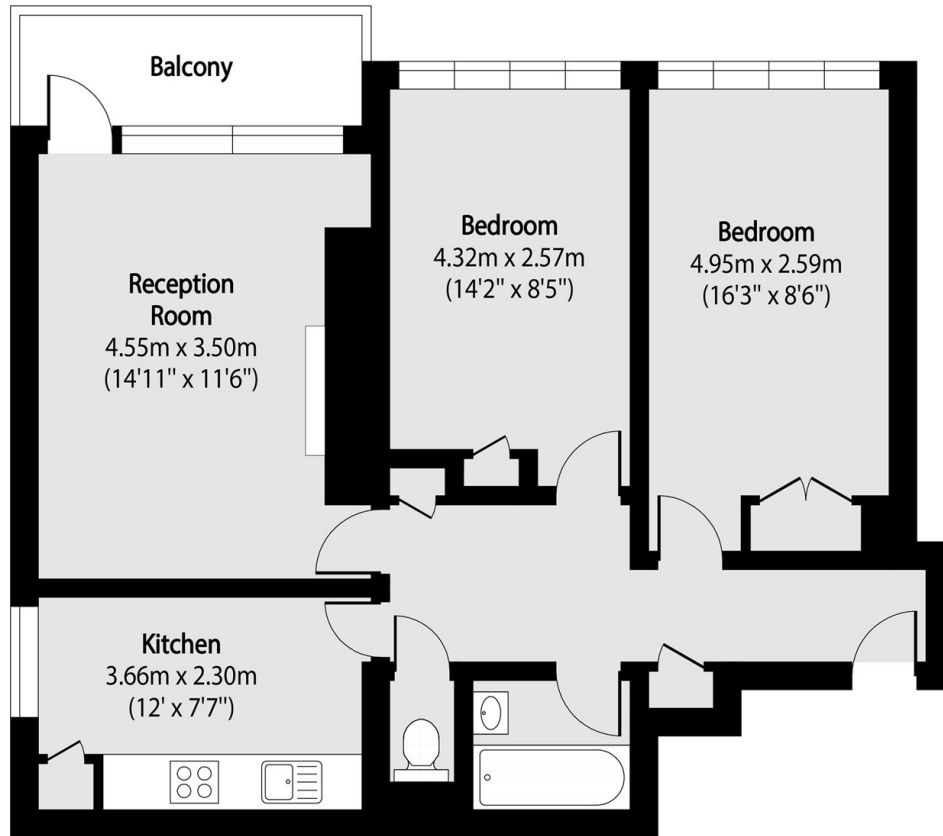
A beautiful and well-configured two double bedroom apartment, situated on the fifth floor with stunning views. The flat has been recently refurbished throughout and has a private balcony.

Leafy Maitland Park Road is a sought after residential area between Belsize Park and Chalk Farm, and is only 0.5 miles away from both Northern line stations, offering quick and easy access into central London.

Features

- Two Bedrooms
- Private Balcony
- Recently Refurbished
- Fifth Floor
- Chain Free
- Great Views

Maitland Park Road, London, NW3



Total area (approx): 65.47 sq m (705 sq. ft)

Balcony total area (approx): 4.44 sq m (48 sq. ft)