



VICTORIA ROAD, W3

£1,850 pcm

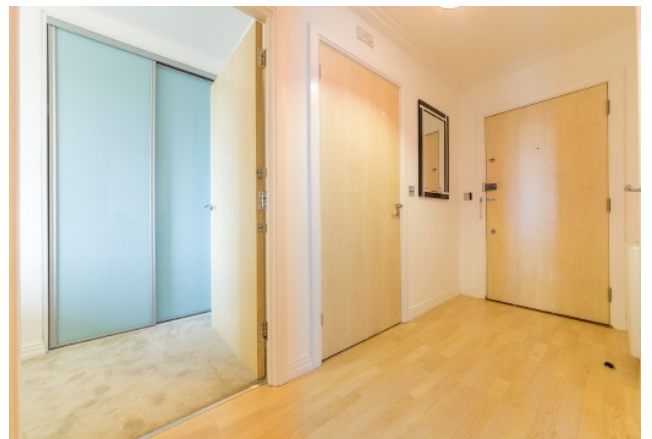
This beautifully presented and spacious one-bedroom apartment is furnished to the highest standard for contemporary city living. The interior features a fully integrated kitchen complete with a four-hob electric cooker, microwave, fridge-freezer, and an in-unit washer/dryer for ultimate convenience.

- Spacious One-Bedroom Layout
- In-Unit Washer & Dryer
- Opposite North Acton Station
- Rapid Central Line Links

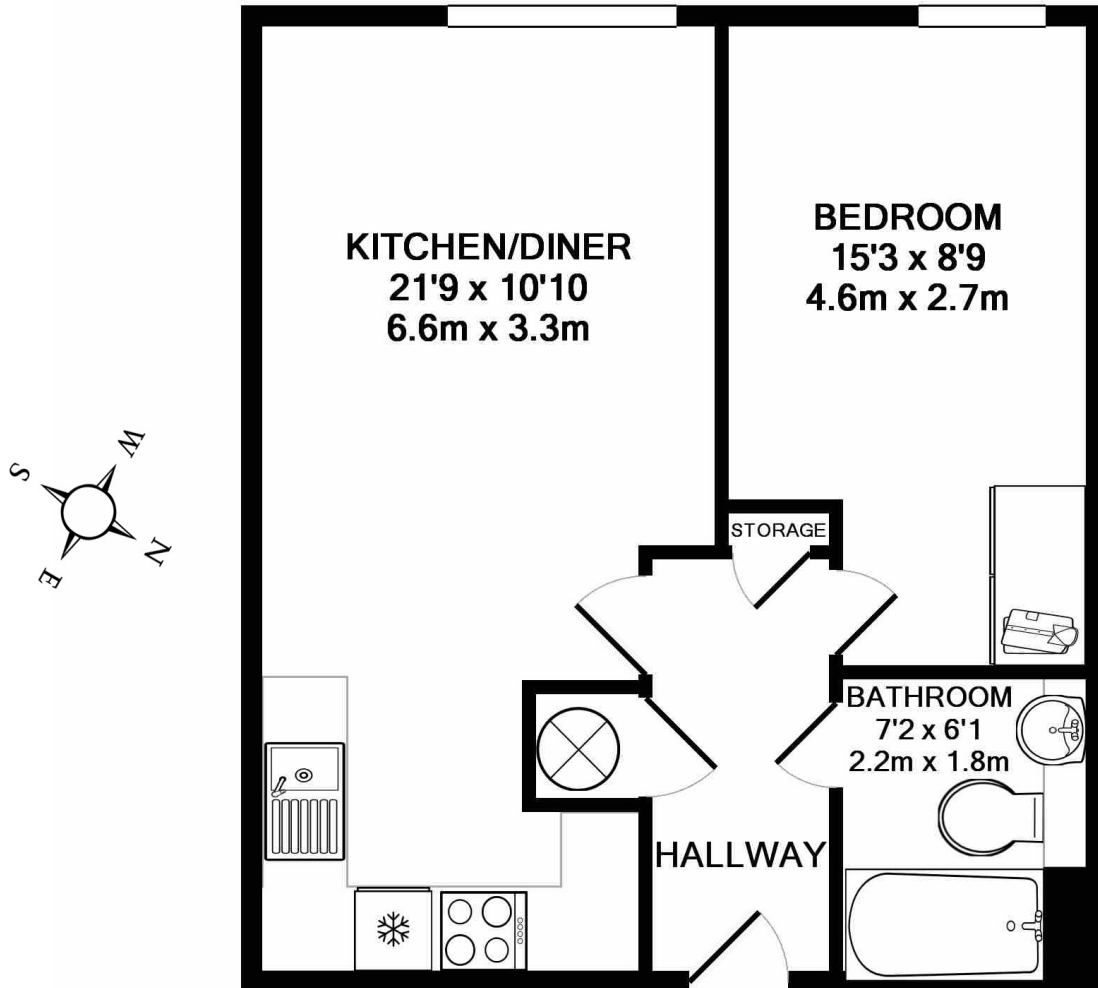


ABOUT THE HOME

Set within a modern development featuring peaceful communal gardens, this property boasts an exceptional West London location. It sits just a stone's throw from North Acton Station, offering residents effortless, direct access to Central London alongside a host of excellent walking-distance amenities.







TOTAL APPROX. FLOOR AREA 438 SQ.FT. (40.7 SQ.M.)

Whilst every attempt has been made to ensure the accuracy of the floor plan contained here, measurements of doors, windows, rooms and any other items are approximate and no responsibility is taken for any error, omission, or mis-statement. This plan is for illustrative purposes only and should be used as such by any prospective purchaser. The services, systems and appliances shown have not been tested and no guarantee as to their operability or efficiency can be given

Made with Metropix ©2017

LiFE RESIDENTIAL

203 Trentham Court, Victoria
Road, London, W3 6BT
Sales: 020 3668 1112
Lettings: 020 3668 1111

Energy Rating: B. We aim to make our particulars both accurate and reliable. However they are not guaranteed; nor do they form part of an offer or contract. If you require clarification on any points then please contact us, especially if you're traveling some distance to view. Please note that appliances and heating systems have not been tested and therefore no warranties can be given as to their good working order.