



BEAUFORT GREEN

Bishops Park Road, SW6

£900,000



An elegantly presented first-floor mansion-block apartment situated on the highly sought-after Bishops Park Road in Fulham. Offering 915 sq. ft of bright, well-proportioned accommodation and a share of freehold, this charming home blends period character with contemporary comfort.

Set within an attractive building, the property features two generous double bedrooms and a modern bathroom, all enhanced by impressively high ceilings and excellent natural light throughout. The spacious living room opens directly onto a private balcony, creating a lovely extension of the living space and an ideal spot for morning coffee or evening relaxation. A well-appointed kitchen completes the layout, providing both practicality and style.

Perfectly positioned moments from the green open spaces of Bishops Park and the Thames Path, the flat also benefits from easy access to the cafés, restaurants and amenities of Fulham Palace Road and Parsons Green. With its desirable location, generous proportions and classic mansion-block appeal, this is a standout home in one of Fulham's most attractive residential pockets.



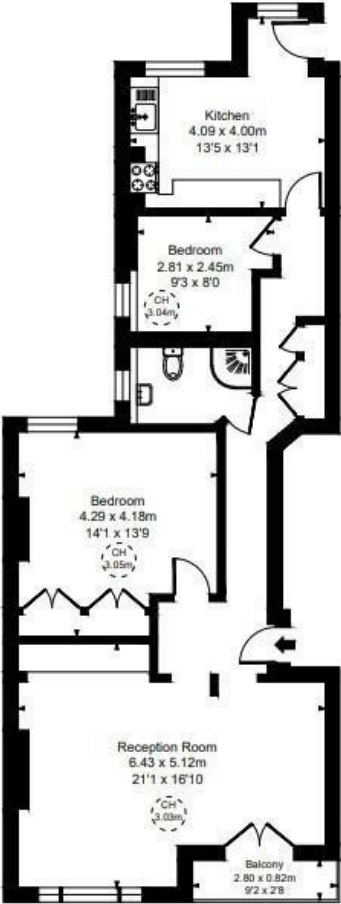


BEAUFORT GREEN



BEAUFORT GREEN

Bishops Mansions SW6
Approximate Gross Internal Area
85.00 sq m / 915 sq ft
(CH = Ceiling Heights)



First Floor

This plan is not to scale. It is for guidance and not for valuation purposes.
All measurements and areas are approximate only, and have been prepared in accordance with the current edition of the RICS Code of Measuring Practice.

At a Glance.

BEAUFORT GREEN

02074594100

charlie@beaufortgreen.co.uk

263 New Kings Road
London
SW16 1DB