



# Cloudesley Mansions

Cloudesley Place, N1

Asking Price £700,000

A bright 2 double bedroom flat set on the 1st floor of this highly regarded Victorian, red brick mansion building, situated right in the very heart of Angel, moments from Upper Street and Islington High Street.

**CHESTERTONS**



# Cloudesley Mansions

## Cloudesley Place, N1

- 2 double bedroom flat
- Red brick mansion building
- Long lease
- Superb central position
- Separate kitchen/ dining room
- Convenient access to Angel Underground (Northern Line)



A bright 2 double bedroom flat set on the 1st floor of this highly regarded Victorian, red brick mansion building, situated right in the very heart of Angel, moments from Upper Street and Islington High Street. Accommodation comprises 2 double bedrooms, bathroom with a window, spacious kitchen/ dining room also with a window and a separate elegant reception room with wonderful large feature window and built-in storage either side of the fireplace. The property sits in a truly delightful, quiet enclave to the West of Liverpool Road and to the East of Barnsbury Road, affording superb access to Angel Underground station (Northern Line), along with Highbury & Islington station (National Rail and Victoria Line trains). The buzz of Upper Street is only a short walk, alternatively the gastro pubs of the Albion and the Drapers Arms can be found locally within Barnsbury, with the supermarkets of Waitrose and Sainsburys located at the Southern end of Liverpool Road, close to Angel. Kings Cross/ St Pancras International is only one stop on the Underground, and also within walking distance, ideal for an evening out, getting around London or travelling to Europe.

**Tenure:** Leasehold 168 years 6 months  
**Service Charge:** £2,576p.a.  
**Local Authority:** Islington  
**Council Tax Band:** D

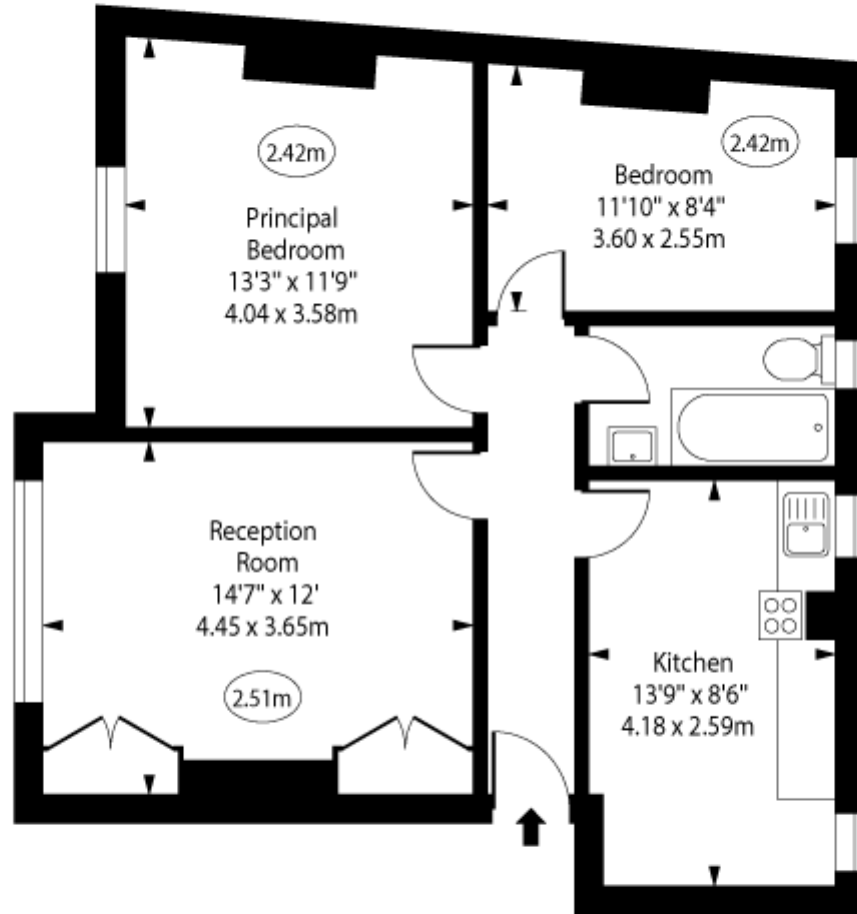
Score	Energy rating	Current	Potential
92+	A		
81-91	B		
69-80	C		
55-68	D	68 D	81 B
39-54	E		
21-38	F		
1-20	G		

### Chestertons Islington Sales

327-329 Upper Street  
 Islington  
 London  
 N1 2XQ  
 islington@chestertons.co.uk  
 020 7359 9777  
 chestertons.co.uk

Cloudesley Mansions,  
Cloudesley Place,  
Islington, N1

○ - Ceiling Height



First Floor

Approx Gross Internal Area      657 Sq Ft - 61.04 Sq M

Every attempt has been made to ensure the accuracy of the floor plan shown.  
However, all measurements, fixtures, fittings, and data shown are approximate interpretations and  
for illustrative purposes only.

Measured according to the RICS IPMS 2. Not To Scale.

[www.goldlens.co.uk](http://www.goldlens.co.uk)

Ref. No. 028225J

