



Merton High Street, SW19

£1,575 Per calendar month

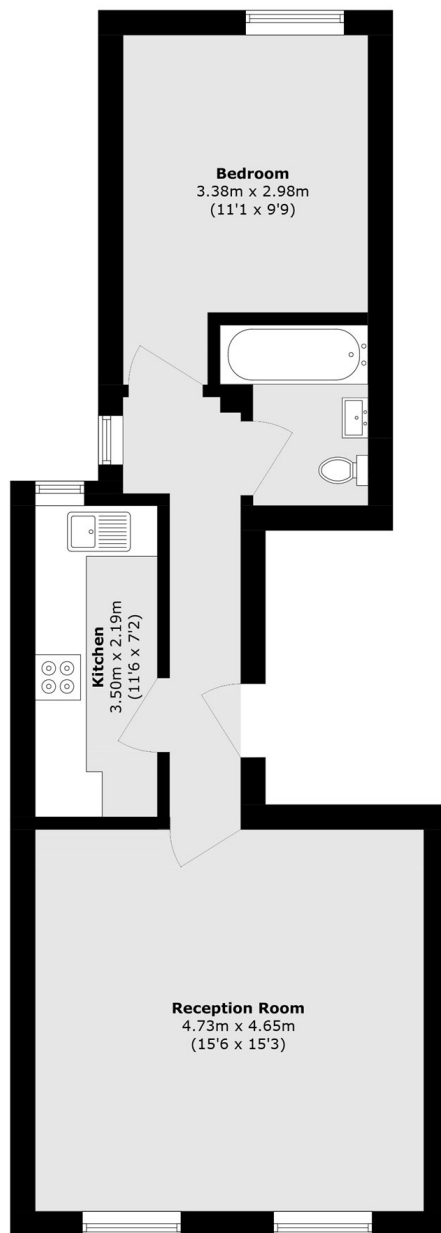
A spacious first floor lateral one bedroom apartment with modern bathroom suite, large reception room, primary bedroom and separate kitchen.

The property is perfectly located for South Wimbledon tube station and the local amenities of Merton High Street whilst allowing good access to Wimbledon town centre with its vast array of shops, restaurants and bars.

Features

- One Bedroom
- Modern Bathroom
- First Floor
- Unfurnished
- South Wimbledon Tube
- Close to Shops

Merton High Street, London, SW19



Total area (approx.): 48.9 sq. m (526.3 sq. ft)

Dexters

Wimbledon
12 The Broadway
London
SW19 1RF
Lettings
020 8545 8581

Energy Rating: C. We aim to make our particulars both accurate and reliable. However they are not guaranteed; nor do they form part of an offer or contract. If you require clarification on any points then please contact us, especially if you're traveling some distance to view. Please note that appliances and heating systems have not been tested and therefore no warranties can be given as to their good working order.

 **RICS** | Regulated
Estate Agent
and Letting Agent

[dexters.co.uk](https://www.dexters.co.uk)