



EASTCOMBE AVENUE, SE7

£475,000

Maisonette
Two Bedrooms
One Bathroom
Private Garden
Charlton Slopes
Modern Bathroom Suite

@marshandparsons
marshandparsons.co.uk

MARSH &
PARSONS



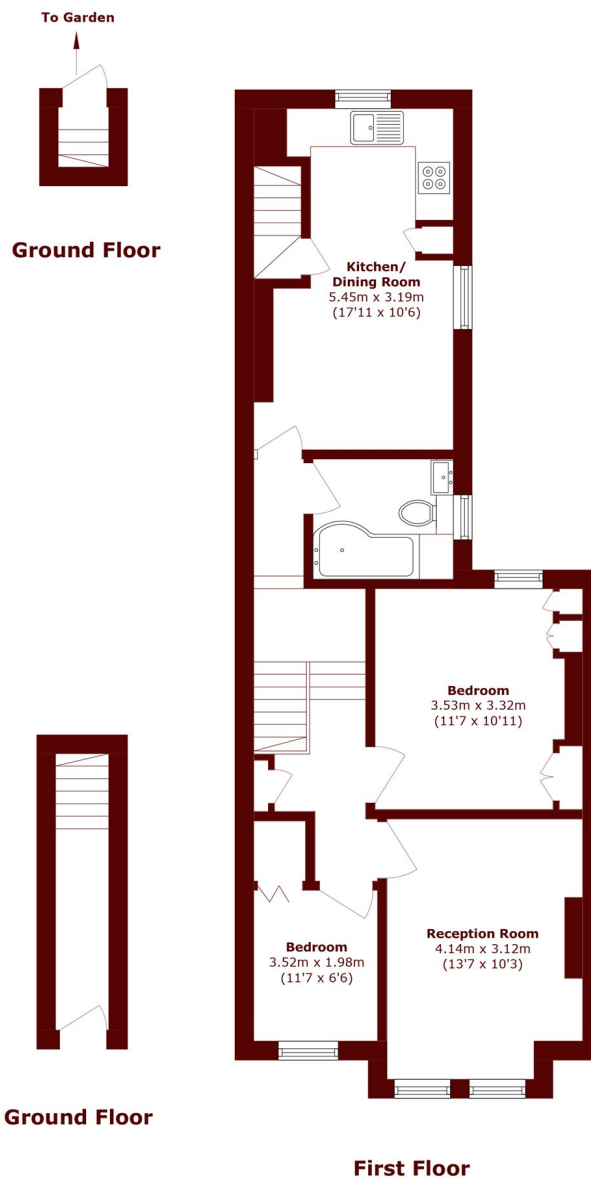
ABOUT THE PROPERTY

Located on Eastcombe Avenue, this immaculate two bedroom top-floor maisonette features a spacious kitchen-dining area with direct access to a private garden. It offers a modern three-piece bathroom, a generous main bedroom with built-in wardrobes, a bright south-facing reception room with floor-to-ceiling windows, and a versatile second bedroom suitable as a nursery, guest room, or home office.

Set within the desirable Charlton Slopes, the property is within walking distance of Charlton and Westcombe Park stations, local shops, green spaces, and the highly regarded Sherington Primary School.



STEP INSIDE EASTCOMBE AVENUE



Total area (approx.): 68.4 sq. m (736.2 sq. ft)

Charlton
020 8293 0454

Energy Rating: D We aim to make our particulars both accurate and reliable. However, they are not guaranteed; nor do they form part of an offer or contract. If you require clarification on any points then please contact us, especially if you're traveling some distance to view. Please note that appliances and heating systems have not been tested and therefore no warranties can be given as to their good working order

MARSH &
PARSONS