



Lisson Grove, Westminster, London, NW1

£550,000

- 2 bedroom
- 2 bathrooms
- Spacious dining area
- 745 sq ft
- 3rd floor
- Luxury residents' facilities
- 24-hour concierge
- Great transport links

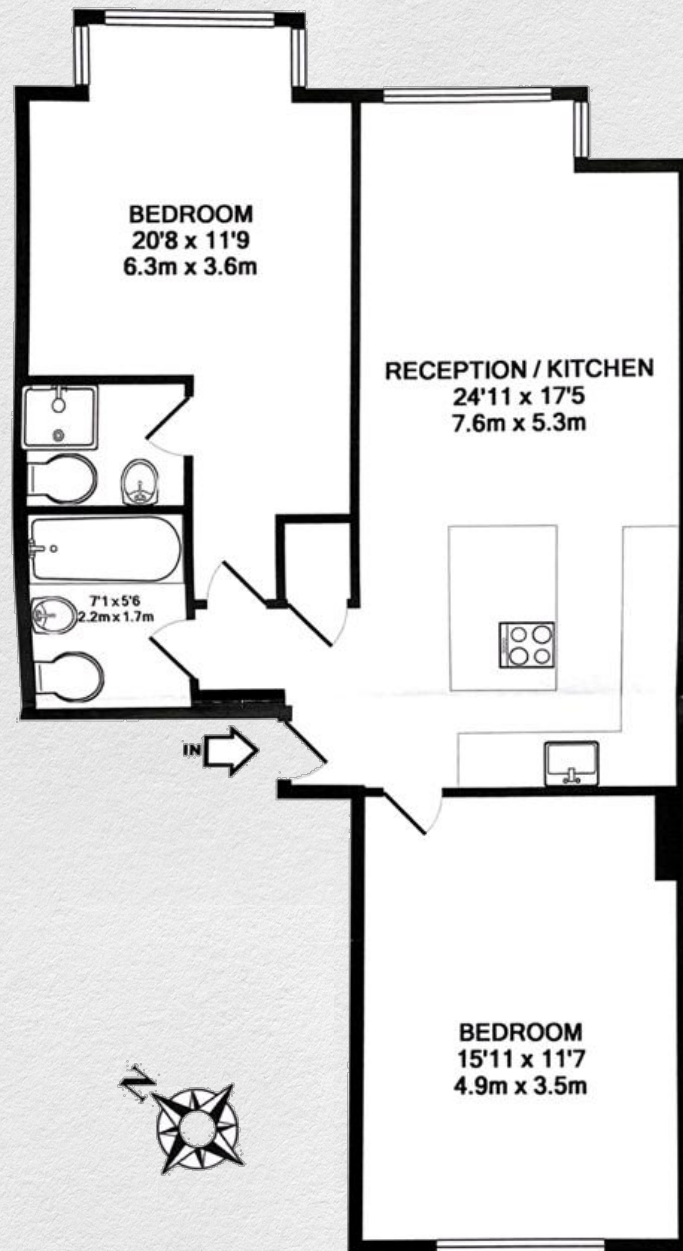
Large 2 bed 2 bath apartment situated on the third floor of this popular, purpose-built, gated development, located within easy reach of Marylebone & Baker Street Station.

The accommodation comprises generous bedroom sizes, with bright open plan reception room with fully equipped kitchen with kitchen island.

Additional benefits include a communal garden, residents pool and gym, as well as 24-hour security.

Portman Gate is conveniently located within easy walking distance of both Marylebone railway station and Baker Street underground station (Metropolitan, Jubilee, Bakerloo, Hammersmith & City).





Address:

Lisson Grove, Westminster, London, NW1

sq ft bed bath

745 2 2

*** For illustration purposes only. Could not be to scale. One-London aims to ensure accuracy but is not liable for any discrepancies.*