



The  
Pennine  
Property  
Group

OFFERS IN THE REGION OF

**£275,000**

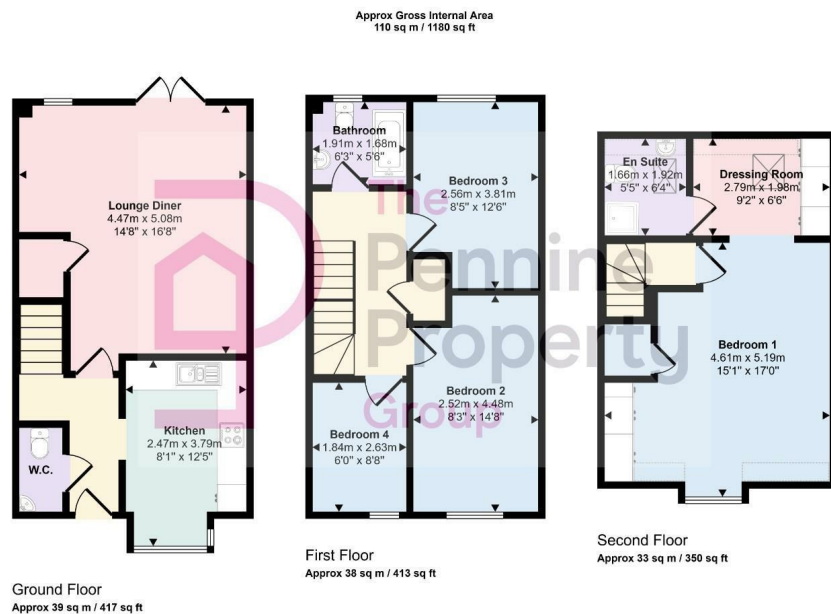
**Ashfield Close**

Penistone, S36 6EY



The  
Pennine  
Property  
Group





Energy Efficiency Rating		
	Current	Potential
Very energy efficient - lower running costs		
(92 plus) <b>A</b>		
(81-91) <b>B</b>		87
(69-80) <b>C</b>	77	
(55-68) <b>D</b>		
(39-54) <b>E</b>		
(21-38) <b>F</b>		
(1-20) <b>G</b>		
Not energy efficient - higher running costs		
England & Wales	EU Directive 2002/91/EC	

Agents Note: Whilst every care has been taken to prepare these particulars, they are for guidance purposes only. All measurements are approximate and are for general guidance purposes only and whilst every care has been taken to ensure their accuracy, they should not be relied upon and potential buyers/tenants are advised to recheck the measurements

**OFFICE ADDRESS**  
12 St Marys Street  
Penistone  
Sheffield  
South Yorkshire  
S36 6DT

**OFFICE DETAILS**  
01226 766755  
info@pennineproperty.co.uk