



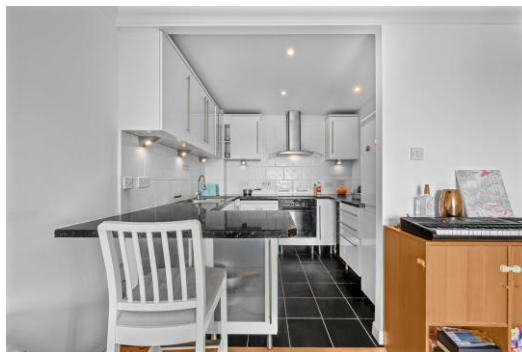
# Millennium Drive

London, E14

Asking Price £465,000

A modern 2 bedroom riverside development in London's thriving Docklands, this well-presented two-bedroom apartment offers stylish and comfortable living in a desirable location.

**CHESTERTONS**



# Millennium Drive

London, E14

- Two Bedrooms | Two Bathrooms
- Approximately 960 sq. ft of Internal living space
- Two private parking spaces included
- On site concierge
- Exclusive residents access to the river pier next to the development



A modern riverside development in London's thriving Docklands, this well-presented two-bedroom apartment offers stylish and comfortable living in a desirable location.

The property boasts a bright and spacious open-plan living area, enhanced by contemporary studio lighting that creates a warm and inviting atmosphere. The space is ideal for both relaxing and entertaining, seamlessly connecting to a sleek, fully fitted kitchen complete with integrated appliances for a clean and modern finish.

Both bedrooms are well-proportioned, offering flexibility for professionals, couples, or small families. The apartment is presented in excellent condition throughout, ready for immediate occupation.

Additional benefits include allocated parking, providing convenience and peace of mind in this well-connected area.

Ideally located, the property is just a short distance from the extensive amenities of Canary Wharf, including a wide range of shops, restaurants, cafés, and leisure facilities. Excellent transport links via the DLR and Underground ensure easy access to the City and beyond.

**Tenure:** Leasehold 96 years approx. remaining.

**Service Charge:** £2,426 pa approx.

**Ground Rent:** £539 pa.

**Local Authority:** Tower Hamlets

**Council Tax Band:** E

Score	Energy rating	Current	Potential
92+	A		
81-91	B		
69-80	C	69 C	70 C
55-68	D		
39-54	E		
21-38	F		
1-20	G		

### *Chestertons Canary Wharf & Greenwich Sales*

Harbour Island

28 Harbour Exchange Square

London

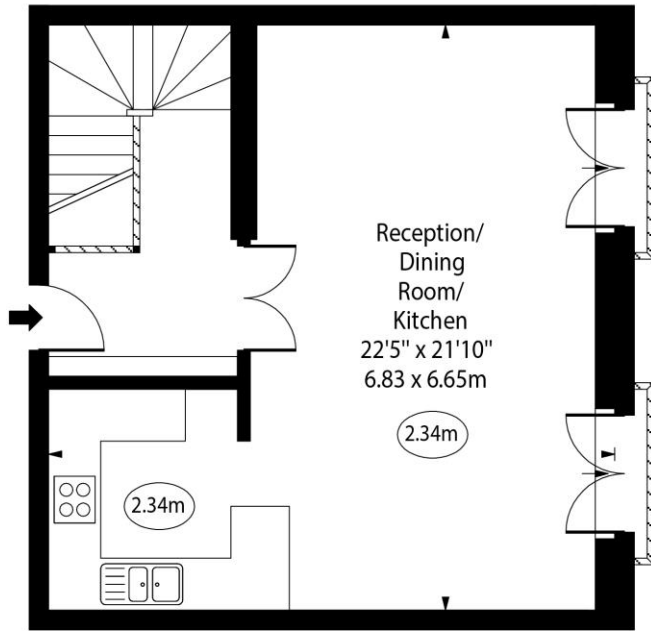
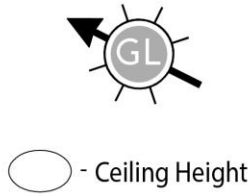
E14 9GE

canarywharf@chestertons.co.uk

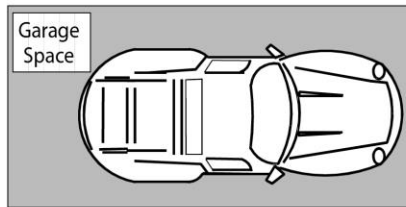
020 7510 8300

chestertons.co.uk

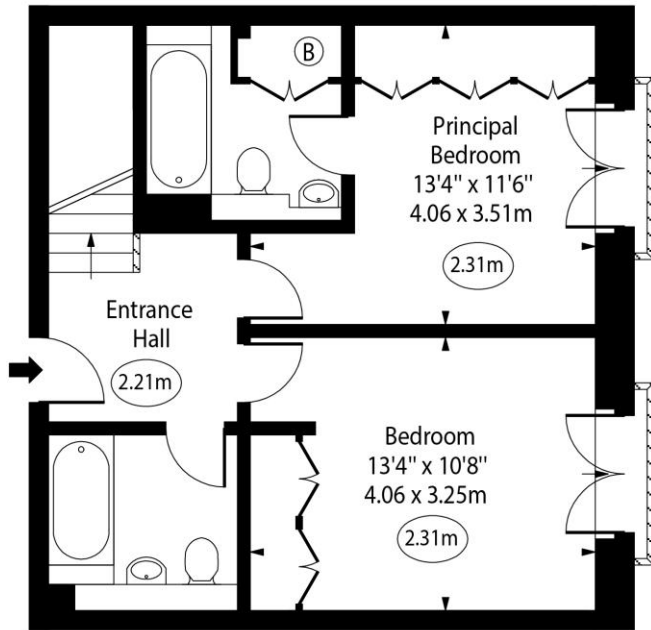
Millennium Drive, E14



Second Floor



Ground Floor



First Floor

Approx Gross Internal Area 960 Sq Ft - 89.18 Sq M

Every attempt has been made to ensure the accuracy of the floor plan shown. However, all measurements, fixtures, fittings, and data shown are approximate interpretations and for illustrative purposes only. Measured according to the RICS. Not To Scale.

[www.goldlens.co.uk](http://www.goldlens.co.uk)  
Ref. No. 031129M