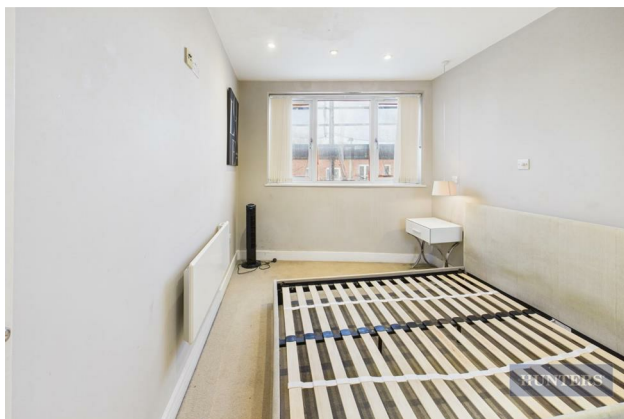
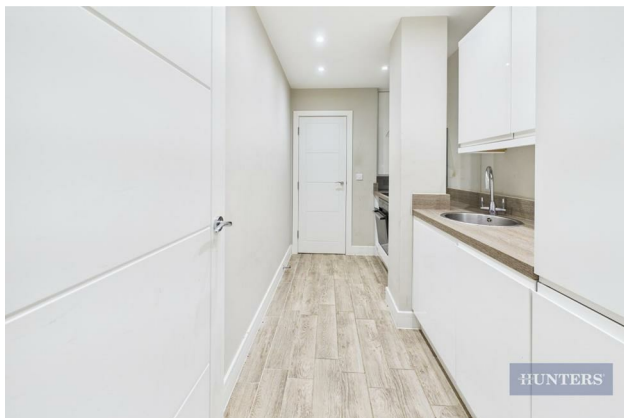


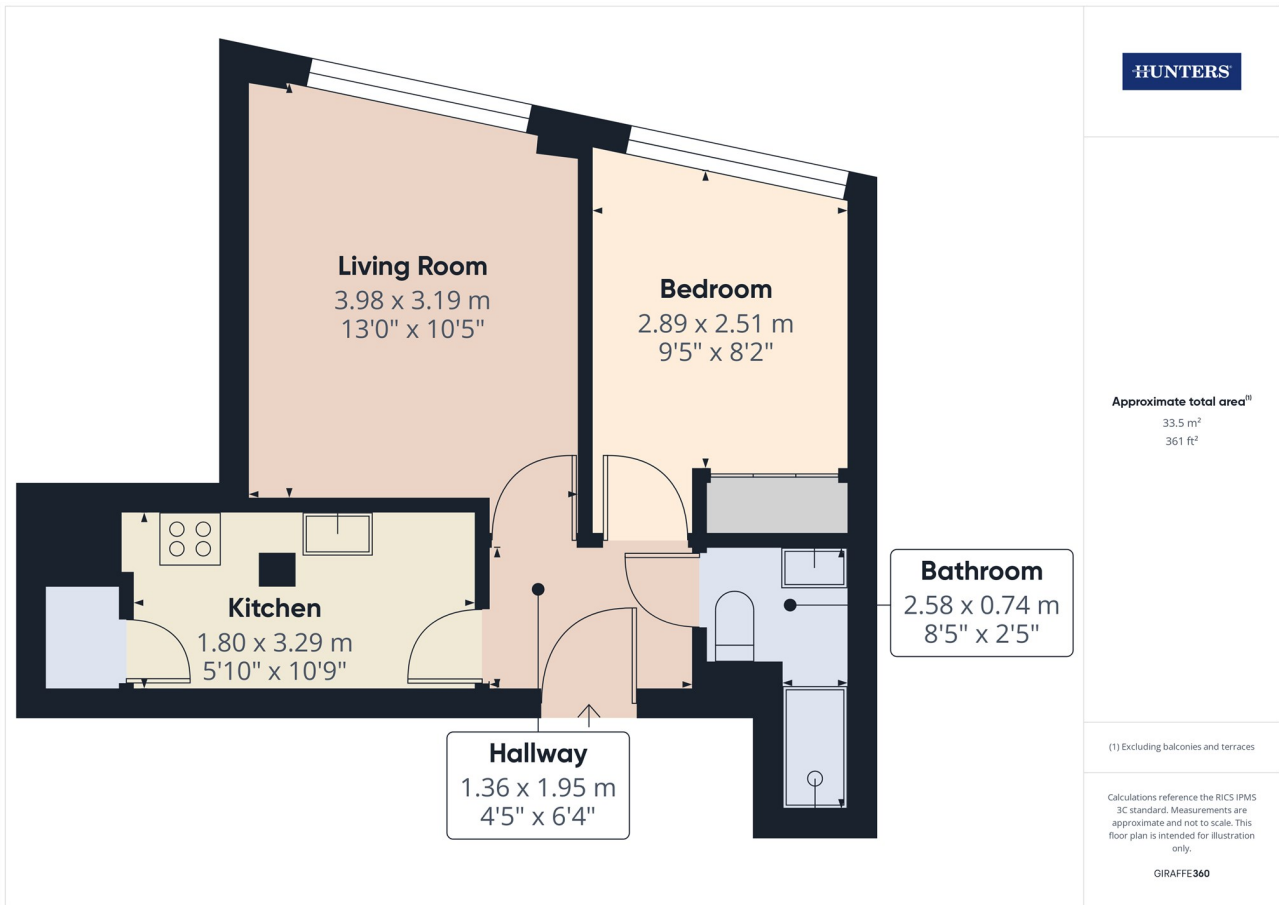
**Flat 11, Kingsbury House Kingsbury Road, Southampton, SO14 0JT**

**£875 Per Calendar Month**

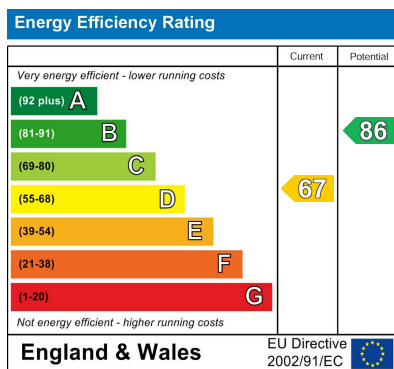
Property Images



## Floorplan



## EPC



## Map



## Details

Type: Apartment Beds: 1 Bathrooms: 1 Receptions: 1

## Summary

**\*\*Reduced Rent whilst property is undergoing external maintenance works\*\***

Welcome to this charming one-bedroom apartment located on Kingsbury Road in the vibrant city of Southampton. This delightful property offers a perfect blend of comfort and convenience, making it an ideal choice for individuals or couples seeking a modern living space. with allocate parking space

Upon entering the apartment, you will find a well-designed layout that maximises space and natural light. The living area is inviting and provides a perfect setting for relaxation or entertaining guests. The kitchen is equipped with essential appliances and ample storage, making it a practical space for culinary enthusiasts.

The bedroom is a tranquil retreat, offering a peaceful atmosphere for rest and relaxation. The bathroom is well-appointed, featuring contemporary fixtures and fittings that enhance the overall appeal of the apartment.

Situated in a desirable location, this property benefits from excellent transport links and local amenities, ensuring that everything you need is within easy reach. Whether you are looking to explore the bustling city centre or enjoy the nearby parks and recreational areas, this apartment provides a fantastic base for your lifestyle.

In summary, this one-bedroom apartment on Kingsbury Road is a wonderful opportunity for those seeking a stylish and convenient home in Southampton. With its modern features and prime location, it is sure to attract interest from a variety of potential buyers or renters. Do not miss the chance to make this lovely apartment your own.

- 1 spacious bedroom
- Modern bathroom
- Cosy apartment
- Easy access to transport
- Ideal for singles or couples
- Bright and airy interior
- Convenient city location