



YUKON ROAD, SW12

£965,000

Four Bedrooms
Three Bathrooms
Split Level
Private Garden
Share of Freehold
Large Eat-In Kitchen

@marshandparsons
marshandparsons.co.uk

MARSH &
PARSONS



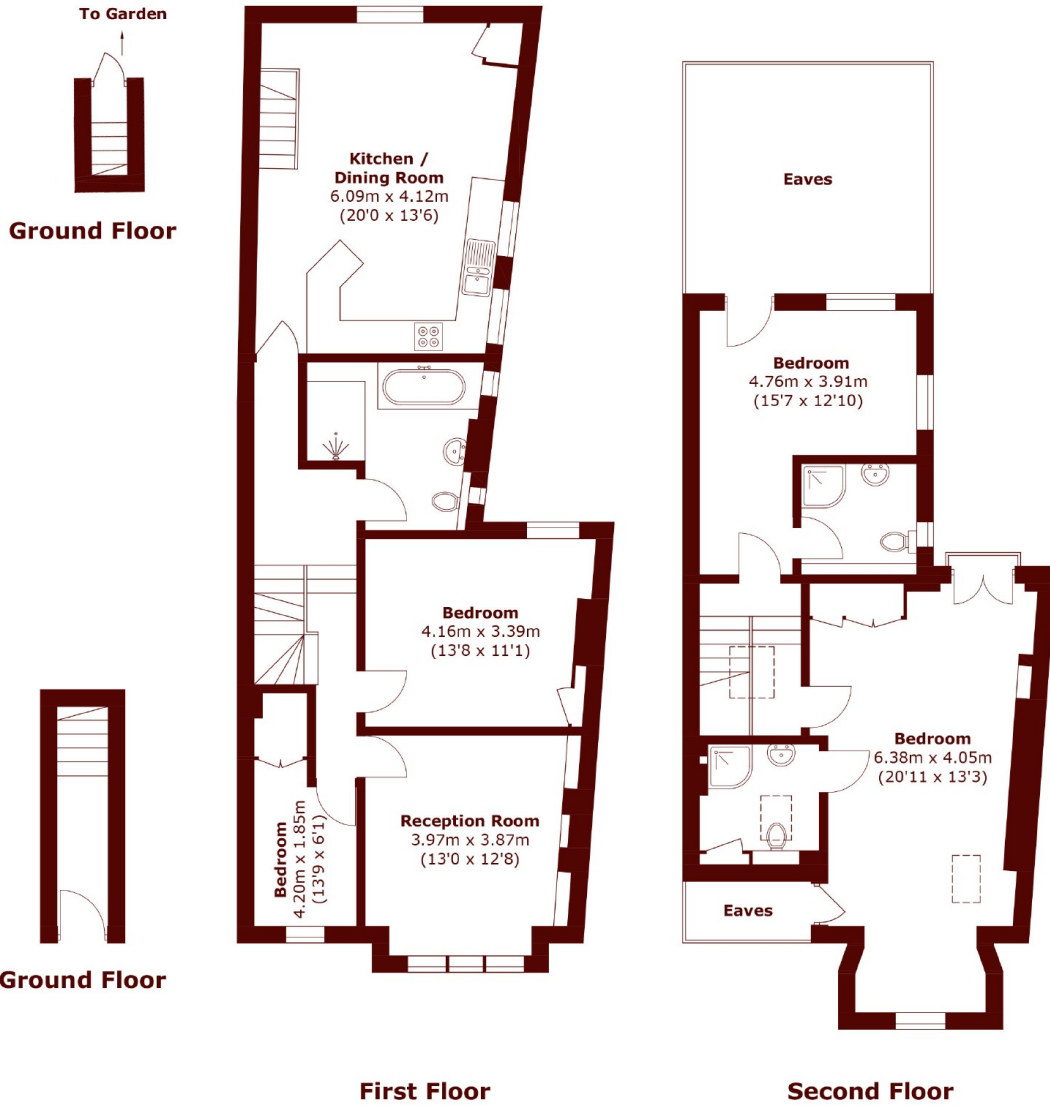
ABOUT THE PROPERTY

An impressive four bedroom, three bathroom split level maisonette measuring 1547 sq ft, situated in Clapham South offering lot of character. Council Tax Band - D

Yukon Road is situated moments from the many shops, bars and restaurants along Balham High Road, within easy reach of the leisure facilities of Clapham Common, and Balham's extensive amenities. The nearest underground station is Clapham South (Northern Line) and Balham Station (National Rail) is close by.



STEP INSIDE YUKON ROAD



Total area (approx.): 143.8 sq. m (1,547.9 sq. ft)
(Excluding Eaves)

Balham & Clapham South
020 7326 9920

Energy Rating: C We aim to make our particulars both accurate and reliable. However, they are not guaranteed; nor do they form part of an offer or contract. If you require clarification on any points then please contact us, especially if you're traveling some distance to view. Please note that appliances and heating systems have not been tested and therefore no warranties can be given as to their good working order

MARSH &
PARSONS