



Sovereign Close, W5

£699,950

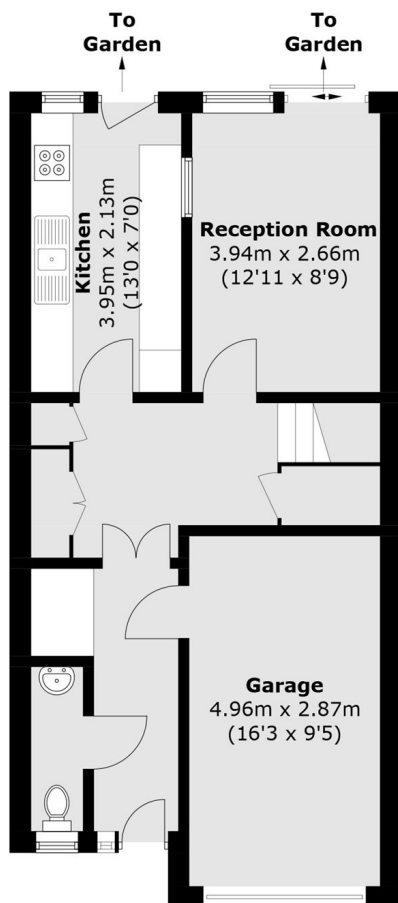
A three-storey townhouse is a fantastic blank canvas, offering a rare opportunity to renovate and create your bespoke dream family home. The spacious layout features two reception rooms, four bedrooms, and two bathrooms, providing ample footprint for a growing family. Complete with off-street parking, a garage, and a pretty rear garden.

Located on a Cul de sac off Castlebar Park, the property is excellently located for access to the shops, restaurants and amenities of Ealing Broadway, as well as the award winning Pitshanger Lane high street.

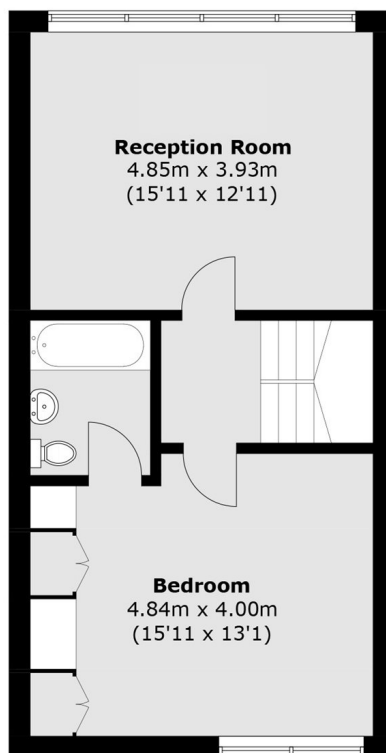
Features

- Townhouse
- Four Bedrooms
- Two Bathrooms
- Two Reception Rooms
- Garage And Parking
- Private Garden

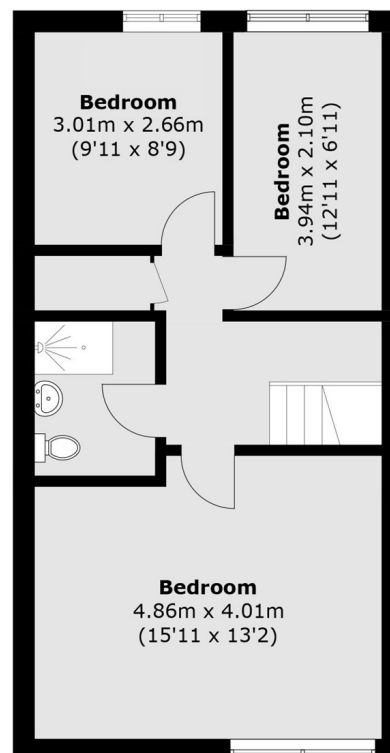
Sovereign Close, London, W5



Ground Floor



First Floor



Second Floor

Total area (approx.): 135.7 sq. m (1,460.7 sq. ft)
Garage: 13.4 sq. m (144.2 sq. ft)