

DEAN & CO

ESTATE AGENTS

SALES - LETTING - AUCTIONS



48 Croft Avenue

, Sunderland, SR4 7DP

£3,500 Per Month

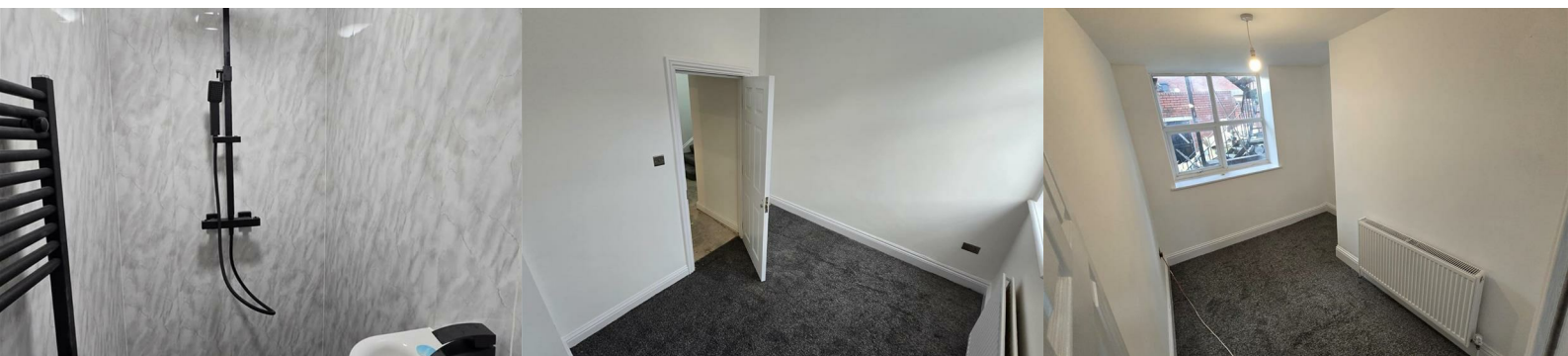


Located on the desirable Croft Avenue in Sunderland, this impressive eight bedroom HMO offers a remarkable opportunity for families or organisation seeking a spacious and modern living environment. Spanning approximately 1,700 square feet, this property is designed to accommodate a variety of lifestyles, providing ample room for relaxation and entertainment. The house boasts three well appointed bathrooms, ensuring convenience for all residents.

Recent upgrades enhance the property's appeal, including a new boiler system and a modern electrical system, which promise efficiency and reliability. The installation of double panel central heating throughout ensures a warm and inviting atmosphere during the colder months.

Safety and security are paramount, and this home features six panel fire doors and a new fire alarm system, providing peace of mind for you and your loved ones. The thoughtful design and attention to detail make this property not only a comfortable residence but also a safe haven.

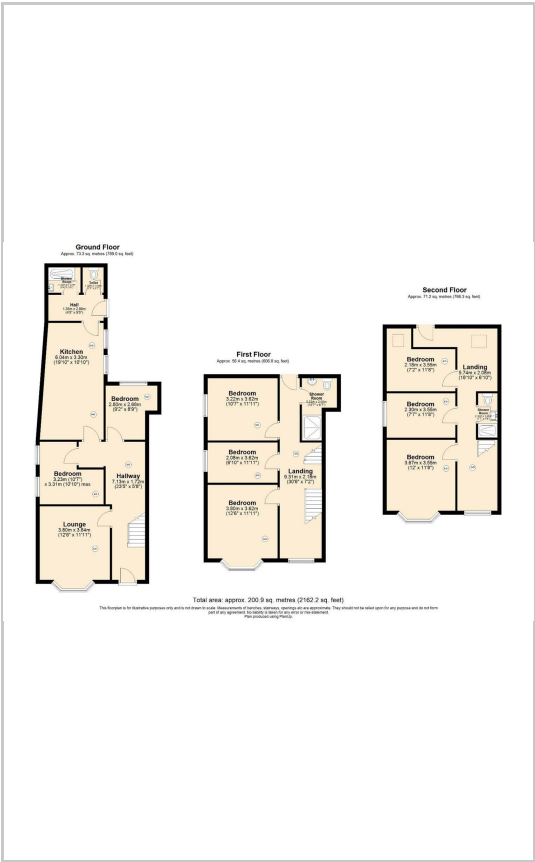
With its generous space and modern amenities, this house on Croft Avenue is a rare find in Sunderland. Perfect for anyone interested in renting a HMO, get in touch now!



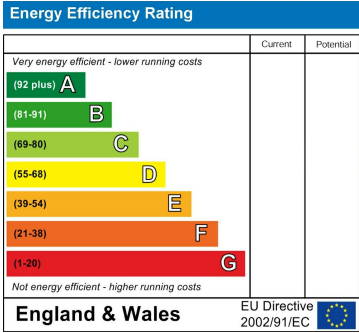
Area Map



Floor Plans



Energy Efficiency Graph



These particulars, whilst believed to be accurate are set out as a general outline only for guidance and do not constitute any part of an offer or contract. Intending purchasers should not rely on them as statements of representation of fact, but must satisfy themselves by inspection or otherwise as to their accuracy. No person in this firms employment has the authority to make or give any representation or warranty in respect of the property.