



2 Lower Tail, Carpenders Park
£795,000





2 Lower Tail

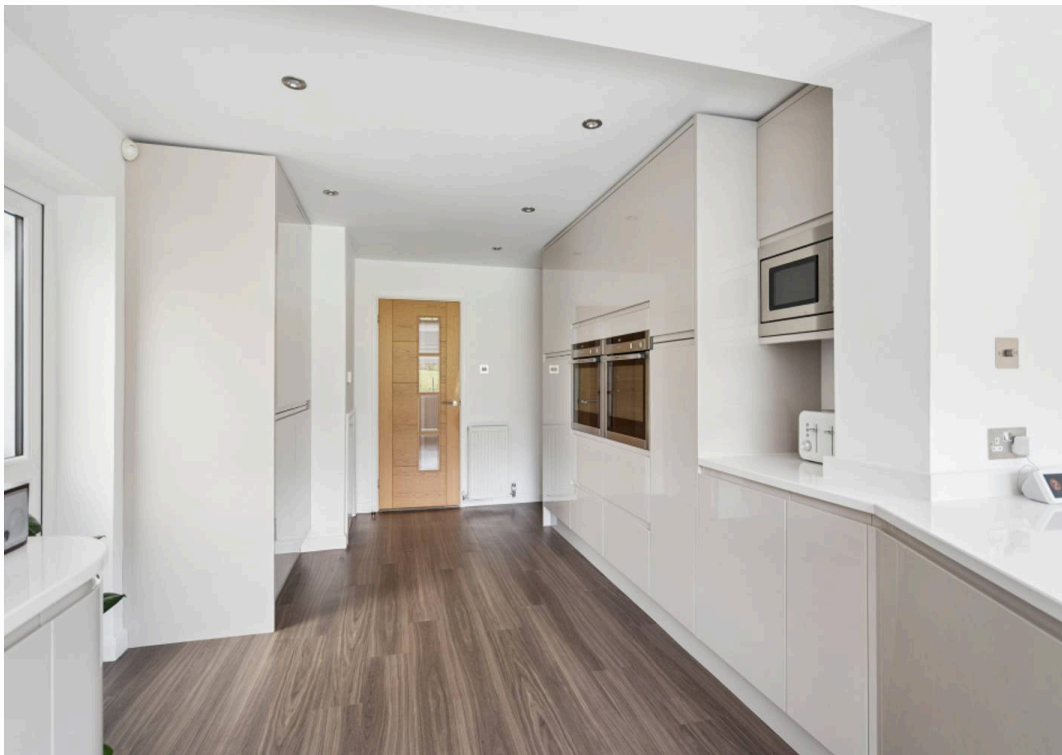
Carpenders Park, Watford

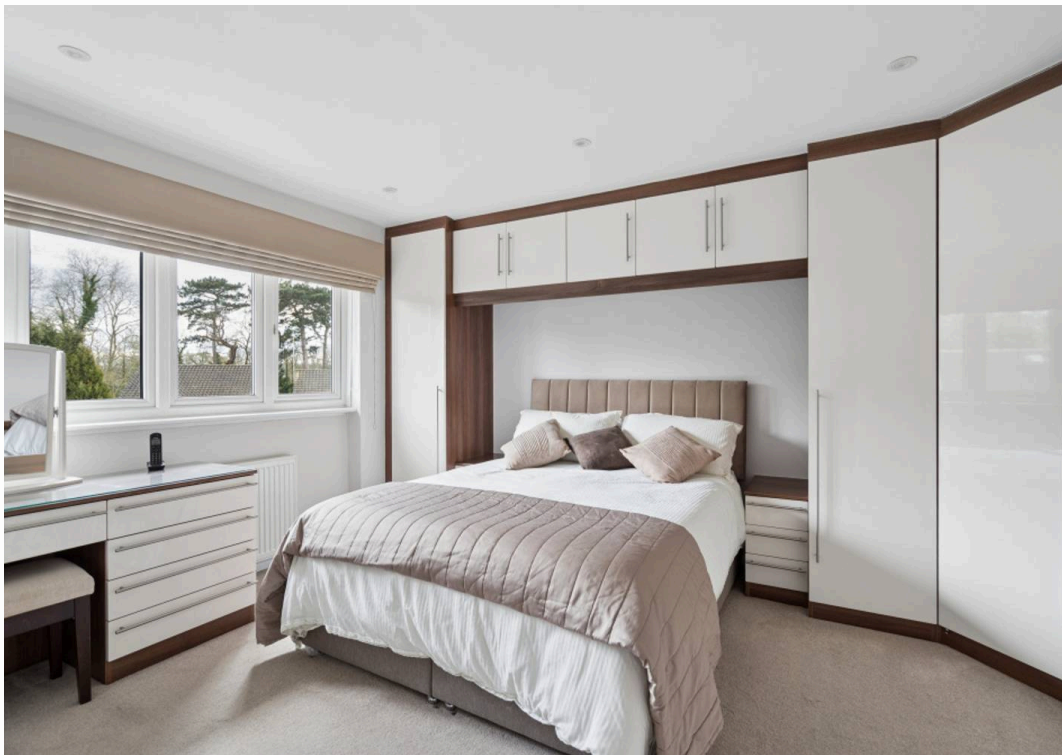
A STANDOUT FOUR-BEDROOM HOME DELIVERING EVERYTHING A FAMILY COULD WISH FOR! Beautifully presented and thoughtfully designed, this impressive four-bedroom link-detached home sits on a peaceful residential road in the highly sought-after Carpenders Park area, just a short stroll from Carpenders Park Overground Station. With excellent transport links, local shops, and well-regarded schools close by, it's the perfect turn-key home for families seeking both comfort and convenience.

- LINK DETACHED HOUSE IN A QUIET CUL DE SAC
- DRIVEWAY WITH PARKING FOR 4 CARS & GARAGE
- REAR EXTENSION WITH STUNNING KITCHEN
- THROUGH LOUNGE WITH OPEN PLAN DINING AREA
- GROUND FLOOR W.C. WITH UTILITY MACHINE CUPBOARD
- FOUR DOUBLE BEDROOMS
- EN-SUITE TO PRINCIPLE BEDROOM
- GAS CENTRAL HEATING AND DOUBLE GLAZING
- QUIET, YET VERY CONVENIENT LOCATION
- IN GREAT CONDITION THROUGHOUT





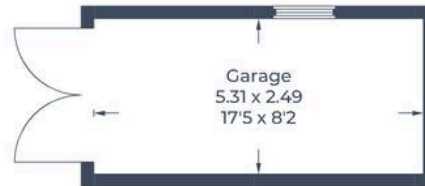




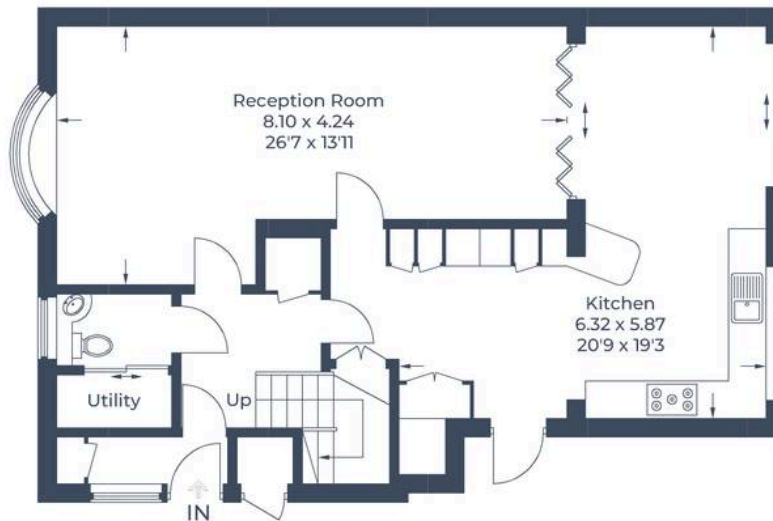




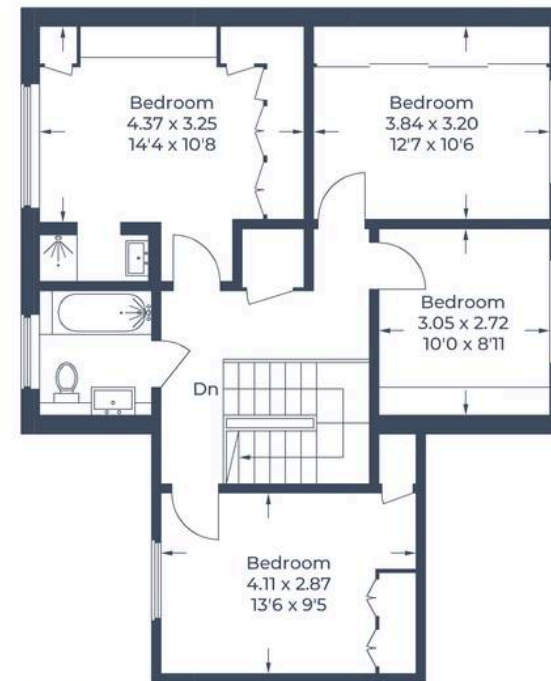
Approximate Gross Internal Area
Ground Floor = 77.8 sq m / 837 sq ft
First Floor = 68.3 sq m / 735 sq ft
External Store / Garage = 14.0 sq m / 151 sq ft
Total = 160.1 sq m / 1,723 sq ft



(Not Shown In Actual
Location / Orientation)



Ground Floor



First Floor

Illustration for identification purposes only,
measurements are approximate, not to scale.

© CJ Property Marketing Produced for Fairfield Estates





Fairfield – Oxhey

1 Station Approach, Watford – WD19 7DT

020 8428 0540 • rob@fairfieldstates.co.uk • fairfieldstates.co.uk/

We have prepared these particulars as a general guide of the property and they are not intended to constitute part of an offer or contract. We have not carried out a detailed survey of the property and we have not tested any apparatus, fixtures, fittings, or services. All measurements and floorplans are approximate, and photographs are for guidance only. These should not be relied upon for the purchase of carpets or any other fixtures or fittings. Lease details, service