



*Jordan fishwick*

398-400 Wilmslow Road, Withington, M20  
Guide Price £1,195 Per Calendar Month



**Wilmslow Road Manchester  
M20 3LU**

**£1,195 Per Calendar Month**



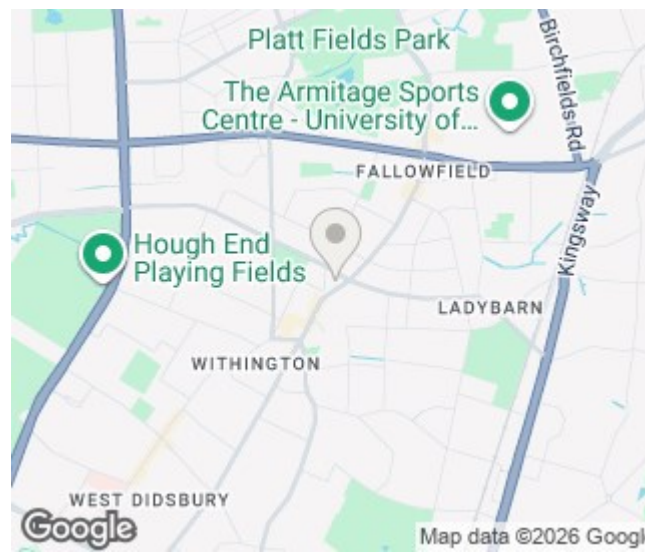
### The Property


**\*\*\* AVAILABLE NOW \*\*\*** A stylishly presented, modern top floor apartment located off Wilmslow Road. The property is located in close proximity to local bars, shops and bus routes into the City Centre. The accommodation will prove ideal for a couple or small family. In brief the property comprises; entrance hall, open plan living/kitchen with integrated appliances, small double bedroom with fitted cupboards and en-suite shower room, second double bedroom with fitted wardrobe and a bathroom with a three-piece white suite. New bedroom carpets fitted March 2026. The property also offers a private off road, allocated parking for one car. Unfurnished to inc. white goods only. To view please contact our Didsbury office.

View our Virtual Tour Here - <https://youtu.be/tdI5-x8mw9E>

EPC Rating - C // Council Tax Band B

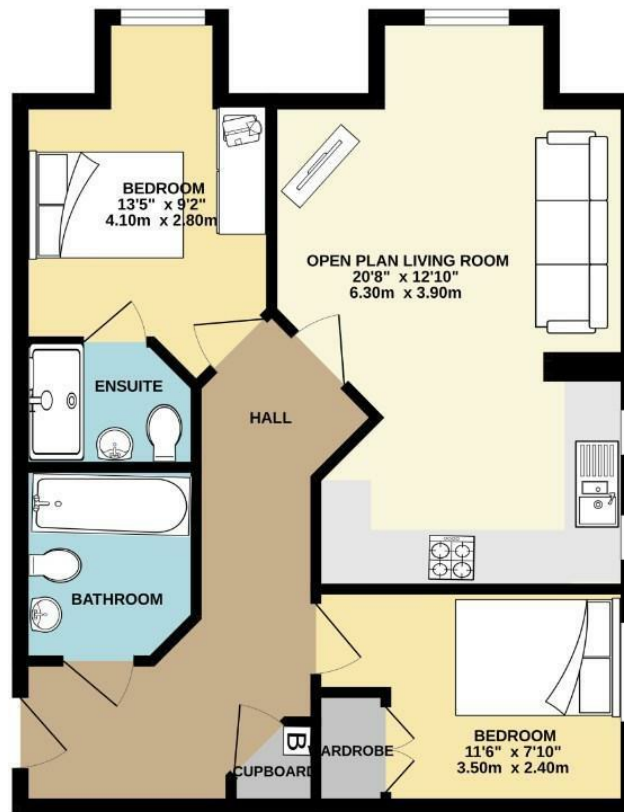
- Available Now
- Two Bedrooms
- Two Bathrooms
- Top Floor Apartment
- Unfurnished
- Ideal for Single Occupants or Couples
- Excellent Transport Links
- Off Road Allocated Parking
- Council Tax Band B
- EPC Rating C



Energy Efficiency Rating		
	Current	Potential
Very energy efficient - lower running costs		
(92 plus) <b>A</b>		
(81-91) <b>B</b>		
(69-80) <b>C</b>	<b>79</b>	<b>79</b>
(55-68) <b>D</b>		
(39-54) <b>E</b>		
(21-38) <b>F</b>		
(1-20) <b>G</b>		
Not energy efficient - higher running costs		
<b>England &amp; Wales</b>	EU Directive 2002/91/EC 	



TOP FLOOR  
574 sq.ft. (53.3 sq.m.) approx.



TOTAL FLOOR AREA : 574 sq.ft. (53.3 sq.m.) approx.  
Measurements are approximate. Not to scale. Illustrative purposes only.  
Made with Metropix ©2024



These particulars are believed to be accurate but they are not guaranteed and do not form a contract. Neither Jordan Fishwick nor the vendor or lessor accept any responsibility in respect of these particulars, which are not intended to be statements or representations of fact and any intending purchaser or lessee must satisfy himself by inspection or otherwise as to the correctness of each of the statements contained in these particulars. Any floorplans on this brochure are for illustrative purposes only and are not necessarily to scale.

Offices at: Chorlton, Didsbury, Disley, Hale, Glossop, Macclesfield, Manchester Deansgate, Manchester Whitworth Street, New Mills, Sale, Wilmslow and Withington