

*Franklyn
James*

Brigantine Court, 7 Spert Street, E14 8EB

£425,000





Brigantine Court, 7 Spert Street, E14 8EB

£425,000

- Spacious living room
- Minutes walk from Limehouse Station
- Lift
- Two bathrooms
- Gas central heating
- Chain free

EPC rating- D
Tax band- D

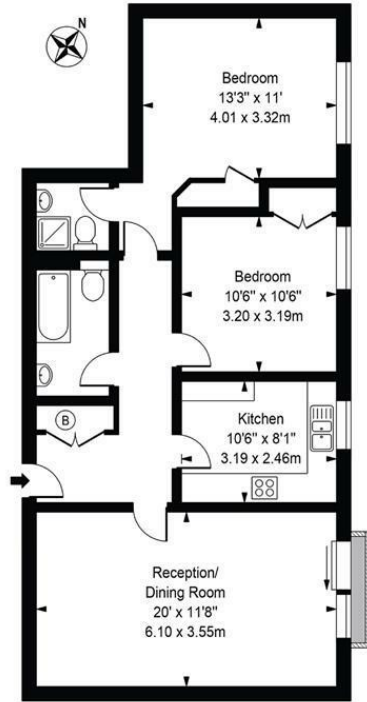


Currently used as a three bedroom HMO, this two bed, two bath apartment is located just minutes walk from Limehouse Station, The Thames Path and The CS3 Cycleway.

Situated on the second floor with lift access, the building contains just 18 apartments and boasts a lease of 971 years.

All the rooms are a great size but it's the lounge that shines out with plenty of natural light and a Juliet balcony.

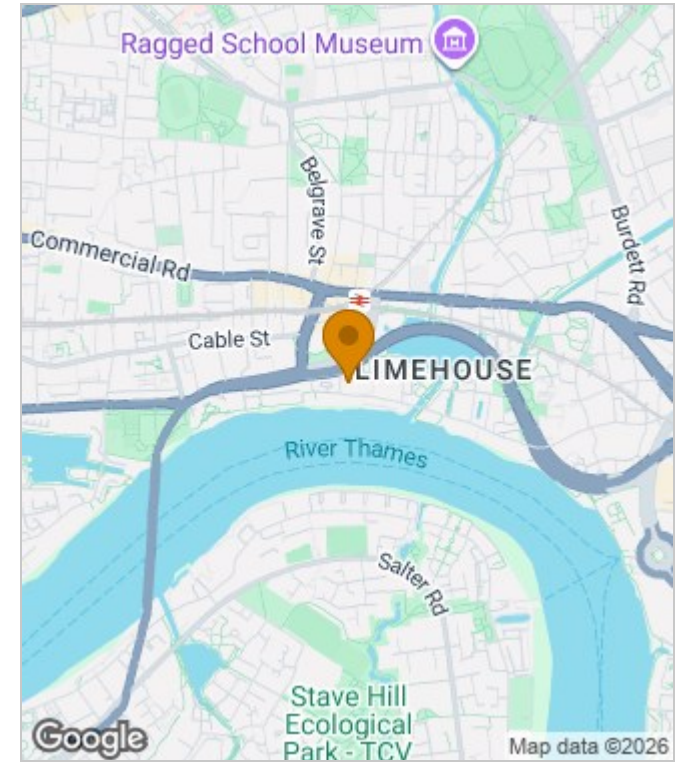
Brigantine Court,
Spert Street, E14 8EB
Approx. Gross Internal Area 840 Sq Ft - 78.08 Sq M



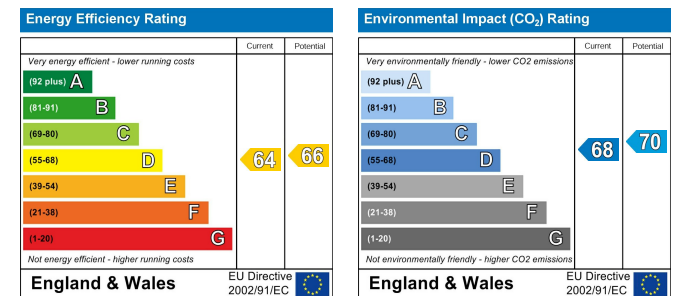
Second Floor
For Illustration Purposes Only - Not To Scale

This floor plan should be used as a general outline for guidance only and does not constitute in whole or in part an offer or contract. Any intending purchaser or lessee should satisfy themselves by inspection, searches, enquiries and full survey as to the correctness of each statement. Any areas, measurements or distances quoted are approximate and should not be used to value a property or be the basis of any sale or let.

Area Map



Energy Performance Graph



These particulars, whilst believed to be accurate are set out as a general outline only for guidance and do not constitute any part of an offer or contract. Intending purchasers should not rely on them as statements of representation of fact, but must satisfy themselves by inspection or otherwise as to their accuracy. No person in this firm's employment has the authority to make or give any representation or warranty in respect of the property.

**Franklyn
James**

29 Narrow Street, London, E14 8DP
Tel: 02077911777 Email: lettings@franklynjames.co.uk <https://www.franklynjames.co.uk>