



**HENDERSON
CONNELLAN**
ESTATE AGENTS

26 Ashley Avenue, Corby, Northamptonshire, NN17 2SS

£190,000

🛏️ 2 🪑 1 🚗 1



"Urban Renewal"

This well presented terrace home is being offered for sale with NO CHAIN and is well positioned opposite a dedicated green area and is convenient for local amenities. The accommodation has recently been decorated throughout and new flooring has been fitted to create a turnkey interior for the next owner. The accommodation comprises entrance hall, living room, the kitchen/dining room benefits from a refreshed range of units. Upstairs there are two double bedrooms, a shower room and separate WC. Outside there is an attractive block paved frontage and an enclosed rear garden.

Description:

This stylish terrace property comes with a smart interior and is being offered for sale with NO CHAIN.

The accommodation comprises entrance hall with stairs rising to the first floor landing.

The living room is dual aspect and is well presented.

The kitchen/dining room is fitted with a stylish range of wall and base level units with work surfaces incorporating a sink with drainer and mixer tap with ceramic tiled wall surrounds.. There is a built in electric oven, hob and extractor hood. There is space and plumbing for a washing machine. There is a useful understairs storage cupboard and a door which opens onto the rear garden.

From the first floor landing there is a modern shower room including a shower enclosure and a pedestal wash hand basin with ceramic tiled wall surrounds. There is a separate WC.

Both bedrooms are double in size.

The property benefits from uPVC double glazed windows and a gas fired central heating system.

Outside:

The frontage has been block paved to provide off road parking for 2-4 cars. The good sized, south facing rear garden is enclosed and mainly laid to lawn. There is a useful storage shed and a block paved patio area.

Room Measurements:

Kitchen/Breakfast Room 6.12m x 3.45m (20'1" x 11'4") max

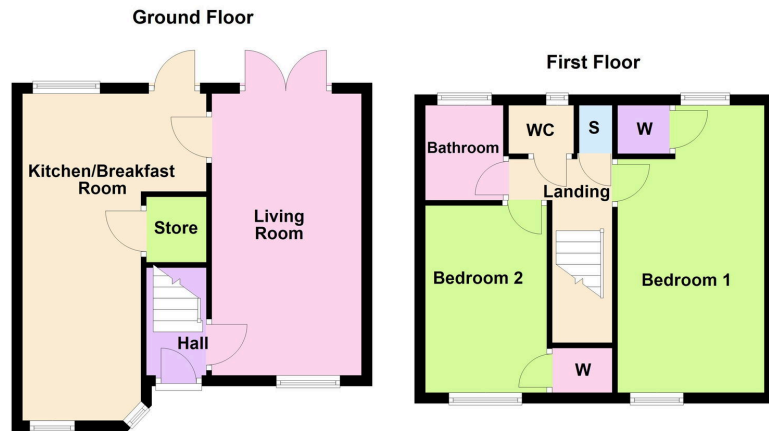
Living Room 2.79m x 5.28m (9'2" x 17'4")

Bedroom One 5.28m x 2.79m (17'4" x 9'2")

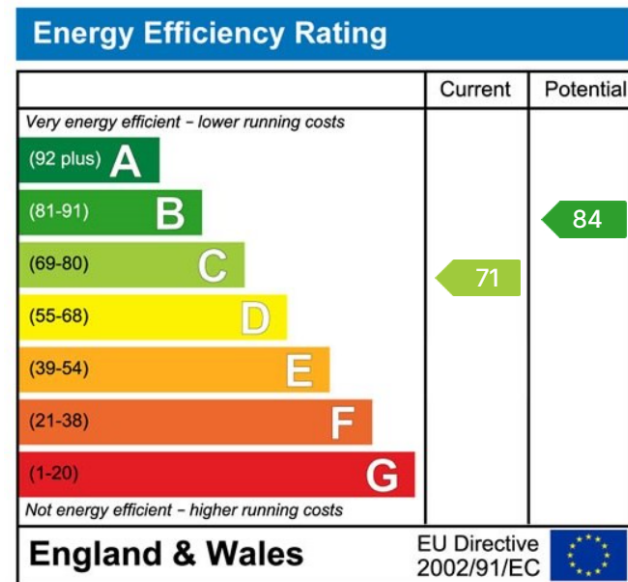
Bedroom Two 3.45m x 2.46m (11'4" x 8'1")

Bathroom 1.45m x 1.75m (4'9" x 5'9")





- Mid Terrace House
- Freshly Decorated Throughout
- Modern Fitted Kitchen
- New Flooring
- Block Paved Driveway for 2 - 4 Cars
- Two Bedrooms
- Shower Room and Separate WC
- Good Sized Rear Garden
- No Chain
- Conveniently situated for Local Amenities



Disclaimer: These particulars do not form part of any offer or contract and should not be relied upon as statements or representations of fact. Any areas, measurements of distances are approximate. The text, photographs and plans are for guidance only and are not necessarily comprehensive.

10 Spencer Court, Corby, Northamptonshire, NN17 1NU

