



17 Heol Y Pentir, Rhose

£495,000 Freehold

4 DOUBLE BEDROOM DETACHED PROPERTY • INTEGRAL DOUBLE GARAGE • LARGE CONSERVATORY EXTENSION • SPACIOUS THROUGHOUT • LOVELY OUTLOOK WITH SEA VIEWS • ENCLOSED FAMILY REAR GARDEN • NO ONWARD CHAIN AND CLEAR TITLE • VERY SHORT WALK TO THE TRAIN STATION • EPC RATING C77





4 DOUBLE BEDROOM DETACHED FAMILY HOME WITH NO CHAIN!

A David Wilson home built in the early 2000s and comprising very spacious accommodation throughout. The ground floor comprises a porch, hall, living room, dining room, conservatory which connects the dining room and the family kitchen and finally there is a utility room and cloakroom/WC.

The first floor has 4 very large double bedrooms - the main having its own dressing room and en-suite. A family bathroom finishes off the internal accommodation.

Outside, there is a drive for 3 or 4 vehicles, double garage and an enclosed rear garden ideal for families and entertaining.

The Cowbridge Comprehensive School is in the Rhoose catchment and Rhoose railway station is a two minute walk from the house!

Council Tax band: F

Tenure: Freehold

EPC Energy Efficiency Rating: C

EPC Environmental Impact Rating: C





Porch

Accessed by uPVC style French doors and with a tiled flooring, the porch then has a steel coated door partly glazed leading into the entrance hallway

Hall

A welcoming hall which has a bamboo style flooring. There are doors giving access to the cloakroom/WC, living room, dining room plus the large family eat in kitchen. A carpeted staircase leads to a gallery landing.

Living Room

17' 11" x 11' 10" (5.46m x 3.61m)

A spacious carpeted room which has a front bay window with deep sill. Marble fireplace with gas fire inset. Two radiators. Glazed double doors lead to the dining room.

Dining Room

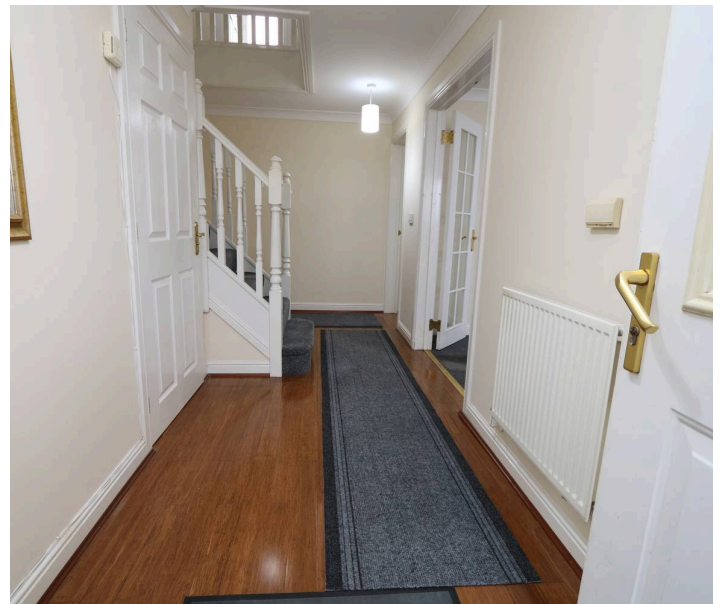
10' 9" x 10' 1" (3.28m x 3.08m)

Carpeted matching the living room and there are uPVC double doors leading into the conservatory. Radiator.

Conservatory

16' 10" x 11' 8" (5.12m x 3.56m)

With a stylish ceramic tiled flooring, this large extension has uPVC windows and French doors leading to the rear garden. Polycarbonate pitched roof plus double French doors lead into the family eat in kitchen





Eat In Kitchen Family Room

22' 1" x 13' 11" (6.74m x 4.23m)

A spacious room in two areas. Initially the kitchen which is fitted with matching eye level and base units in a maple style. Modern worktops with a sink inset have a four ring gas hob and with adjacent double waist level oven and grill. Integrated dishwasher, fridge and freezer. Rear window, various spotlights and tiled splashback areas. A ceramic tiled flooring leads into the family area which is ideal for seating and dining. Further windows to the garden and French doors into the conservatory. Two radiators. Door to the utility.

Utility Room

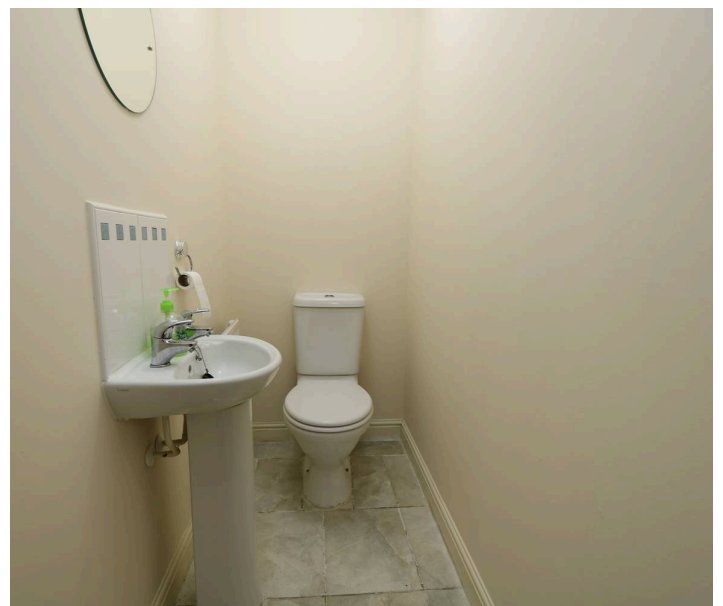
9' 11" x 5' 6" (3.03m x 1.67m)

With a tile flooring, the utility room has a secretory sink unit side-by-side space for appliances and doors give access to a handy storage cupboard plus to the integral double garage stop external party glazed door leads to the side radiator wall mounted Worcester Combi boiler which has been recently fitted.

Cloakroom WC

5' 10" x 2' 11" (1.78m x 0.90m)

With a tiled flooring and a white suite comprising WC and pedestal basin with tiled splashback. Radiator and extractor.





Galleried Landing

A galleried landing which has panelled doors off to the four large double bedrooms, the family bathroom and also to a storage cupboard with shelf. Loft hatch.

Bedroom One

17' 4" x 14' 11" (5.28m x 4.54m)

A large carpeted double bedroom which has front windows offering some lovely views over adjacent marshland and distant channel views. There is an excellent range of fitted bedroom furniture which is in essence 2 doubles and a triple. Radiator, arch to the dressing area and a door leads to the ensuite.

Dressing Area

5' 10" x 5' 4" (1.77m x 1.63m)

Carpeted and with an obscure glazed front window. Radiator and drawers plus makeup area.

En Suite

8' 4" x 6' 4" (2.55m x 1.93m)

With a white vinyl flooring and complementing suite comprising WC, pedestal basin and fully tiled double shower cubicle. Obscure glazed side window, radiator, extractor and shaver point.





Bedroom Two

12' 0" x 11' 9" (3.67m x 3.59m)

A spacious carpeted double bedroom with recessed double wardrobes, radiator and a front window to enjoy the open views as of bedroom one

Bedroom Three

12' 7" x 12' 0" (3.83m x 3.66m)

Spacious carpeted double bedroom with a recessed triple wardrobe, radiator and rear window

Bedroom Four

14' 5" x 9' 5" (4.40m x 2.87m)

A carpeted double bedroom with two recessed wardrobes, radiator and rear window.

Bathroom WC Shower

9' 8" x 6' 2" (2.94m x 1.87m)

Similar to the en-suite and with a white vinyl flooring and complementing suite with WC, pedestal basin, panelled bath plus a fully tiled double shower cubicle. Radiator, shaver point, extractor and obscure glazed rear window.

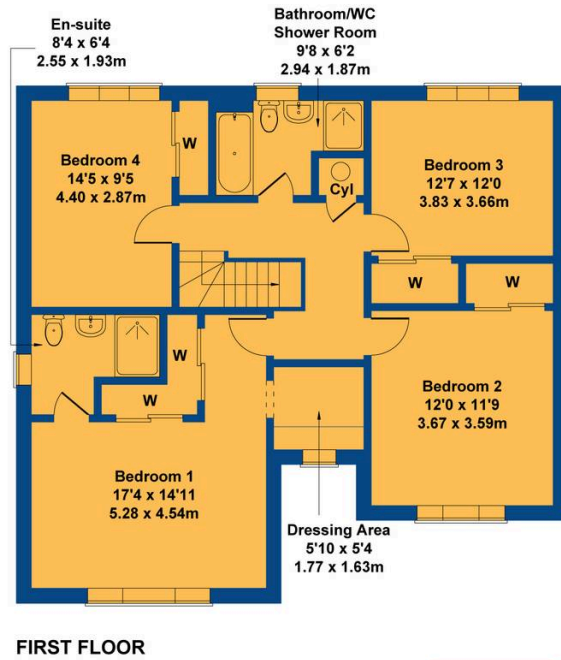
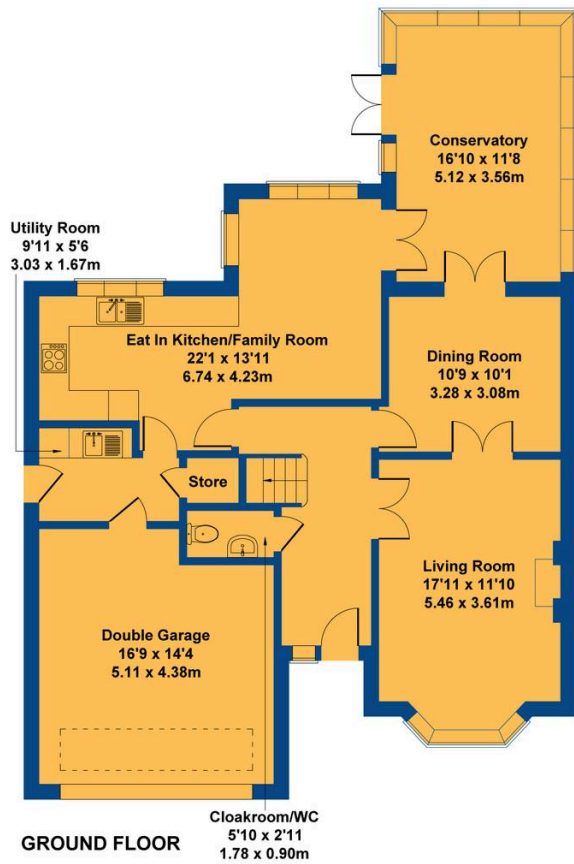




blackbear

17 Heol Y Pentir

Approximate Gross Internal Area
2207 sq ft - 205 sq m



Not to Scale. Produced by The Plan Portal 2025
For Illustrative Purposes Only.



blackbear