

Barnsnap Close, Horsham

Offers Over £200,000

 1  1  1



A beautifully presented First Floor Maisonette located in a quiet Cul De Sac, Generous Double Bedroom, boasting a Long Lease, well Presented Throughout and Allocated Parking.

Tenue: Leasehold

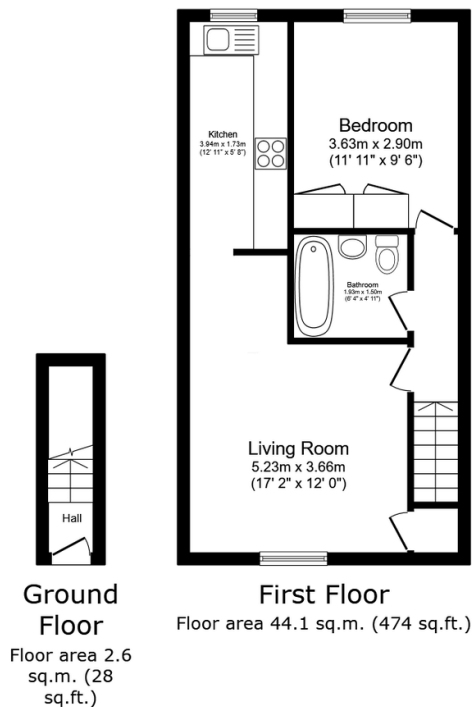
Lease Length: Appox. 948 years remaining

Council Tax: Band B

EPC Rating: Current C - Potential C

Key Features

- Watch Our Video Tour
- Well Presented Throughout
- Allocated Parking
- 900+ Year Lease
- Ideal First Time Buy
- First Floor Maisonette
- Quiet Cul De Sac Location
- 0.7 Miles From Littlehaven Station
- Generous Double Bedroom
- Close To Local Shops



Total floor area: 46.7 sq.m. (502 sq.ft.)

This floor plan is for illustrative purposes only. It is not drawn to scale. Any measurements, floor areas (including any total floor area), openings and orientations are approximate. No details are guaranteed, they cannot be relied upon for any purpose and do not form any part of any agreement. No liability is taken for any error, omission or misstatement. A party must rely upon its own inspection(s). Powered by www.Propertybox.io