

Long Meadow Tirley Lane, Utkinton

£800,000 Freehold

Arguably The Best Views in Cheshire • Substantial Detached Home • Large Gardens Extending to Approximately 0.4 Acre • Driveway and Garage • No Chain • Seven Bedrooms • Three Bathrooms • Open Plan Living/Dining/Sitting Room and Large Kitchen • Solar Panels with Battery Storage • Air Source Heat Pump

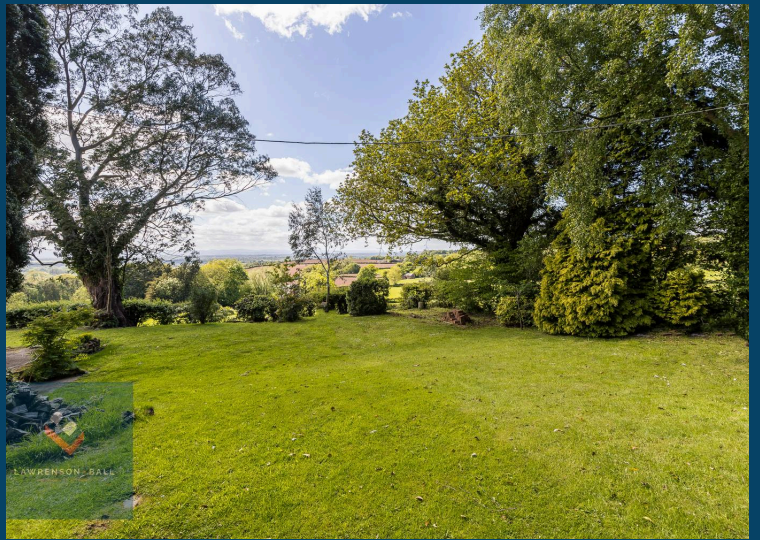


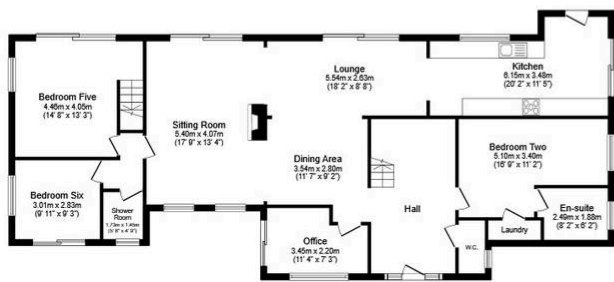
Is this the best view in Cheshire? This substantial 7 bedroom, 3 bathroom detached family home is situated in an elevated position above Utkinton with unrivalled panoramic and far reaching views stretching from Beeston Castle to the Clwydian Range and beyond. Council Tax band: G

Tenure: Freehold

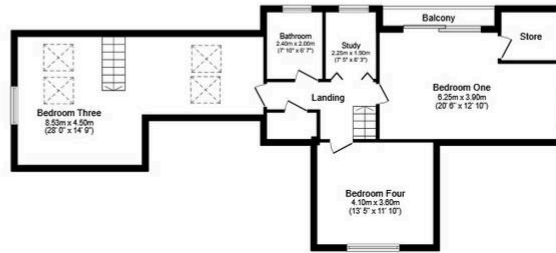
- Arguably The Best Views in Cheshire
- Substantial Detached Home
- Large Gardens Extending to Approximately 0.4 Acre
- Driveway and Garage
- No Chain
- Seven Bedrooms
- Three Bathrooms
- Open Plan Living/Dining/Sitting Room and Large Kitchen
- Solar Panels with Battery Storage
- Air Source Heat Pump







Ground Floor



First Floor



Garage

Total floor area: 264.5 sq.m. (2,847 sq.ft.)

This floor plan is for illustrative purposes only. It is not drawn to scale. Any measurements, floor areas (including any total floor area), openings and orientations are approximate. No details are guaranteed; they cannot be relied upon for any purpose and do not form any part of any agreement. No liability is taken for any error, omission or misstatement. A party must rely upon its own inspection(s). Powered by www.Propertybox.io

You can include any text here. The text can be modified upon generating your brochure.