



Farrington House

Strand Drive, TW9

Asking Price £600,000

This apartment will make a fantastic buy to let investment. A luxury two bedroom, two bathroom apartment in this popular riverside development benefiting from 24 hour concierge service, allocated parking, underfloor heating, video entry phone system, use of the on-site conference facilities and gymnasium, and delightful communal gardens. The apartment comprises two double bedrooms (master bedroom with en-suite shower room), reception room with direct access to a private balcony, luxury fully integrated kitchen, family bathroom and ample storage. EPC = C

CHESTERTONS



Farringdon House

Strand Drive, TW9

- Two Bedrooms
- Two Bathrooms
- Communal Gardens
- Riverside Development
- Luxury Fitted Integrated Kitchen
- Concierge Facility
- Allocated Parking



This apartment will make a fantastic buy to let investment. A luxury two bedroom, two bathroom apartment in this popular riverside development benefiting from 24 hour concierge service ,allocated parking, underfloor heating, video entry phone system, use of the on-site conference facilities and gymnasium, and delightful communal gardens. The apartment comprises two double bedrooms (master bedroom with en-suite shower room), reception room with direct access to a private balcony, luxury fully integrated kitchen, family bathroom and ample storage. EPC = C

Tenure: Leasehold 989 years 7 months
Service Charge: £4000 Sinking fund
Ground Rent: £300
Local Authority: London Borough of Richmond upon Thames
Council Tax Band: F

Score	Energy rating	Current	Potential
92+	A		
81-91	B		
69-80	C	77 C	78 C
55-68	D		
39-54	E		
21-38	F		
1-20	G		

Chestertons Kew Sales

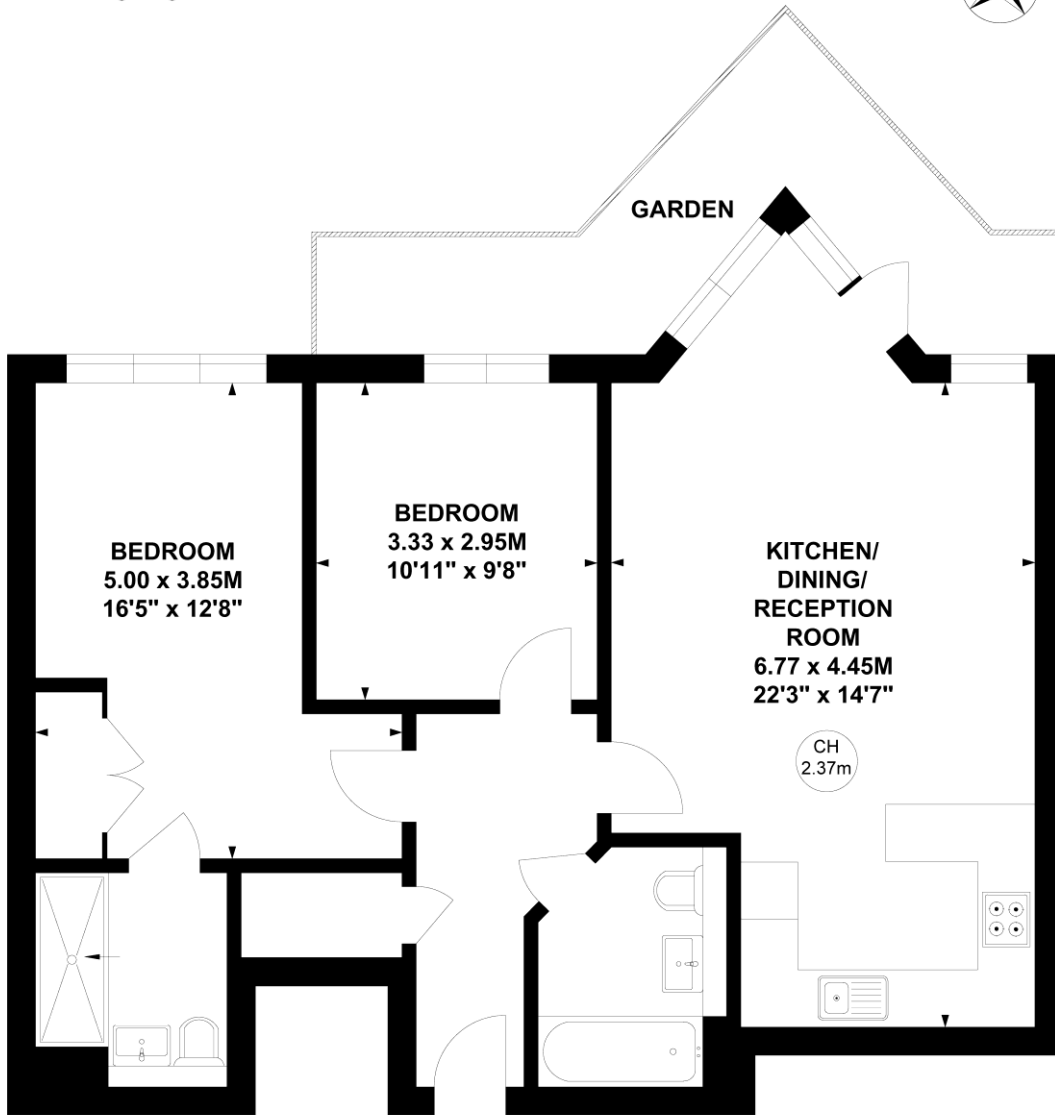
1 Royal Parade
 Kew
 Richmond
 TW9 3QD
 kew@chestertons.co.uk
 020 8104 0340
 chestertons.co.uk

Farringdon House, TW9

Approximate gross internal area

75.08 sq m / 808 sq ft

Key :
CH - Ceiling Height



Ground Floor

Not to scale, for guidance only and must not be relied upon as a statement of fact.
All measurements and areas are approximate only