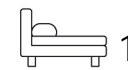


Living  
made  
better

Oratory Apartments  
Canning Town, E16 4HB



Asking Price £325,000

# Oratory Apartments, Canning Town, E16 4HB

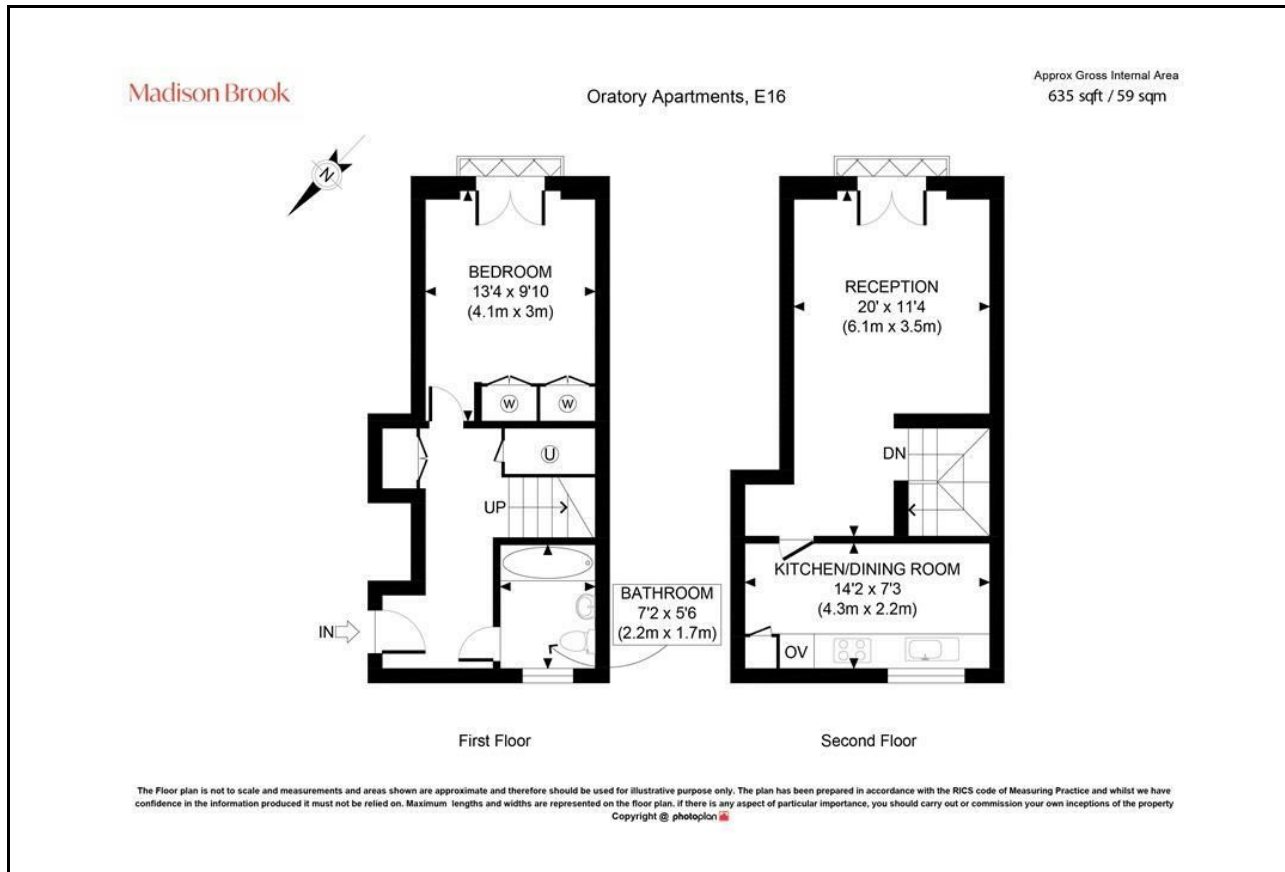
Madison Brook

## Property Summary

Situated on the first floor of the Oratory Apartments development, this well-presented one-bedroom apartment spans approximately 635 sq.ft. and is arranged over two floors. The property features a bright and generous reception room, a separate integrated kitchen/dining area, and a well-proportioned double bedroom with built-in storage. A contemporary three-piece bathroom suite and additional storage complete the accommodation. Residents benefit from access to communal green spaces and excellent local amenities nearby. Ideally positioned within walking distance of Canning Town Underground and DLR stations, the property offers superb transport links across London.

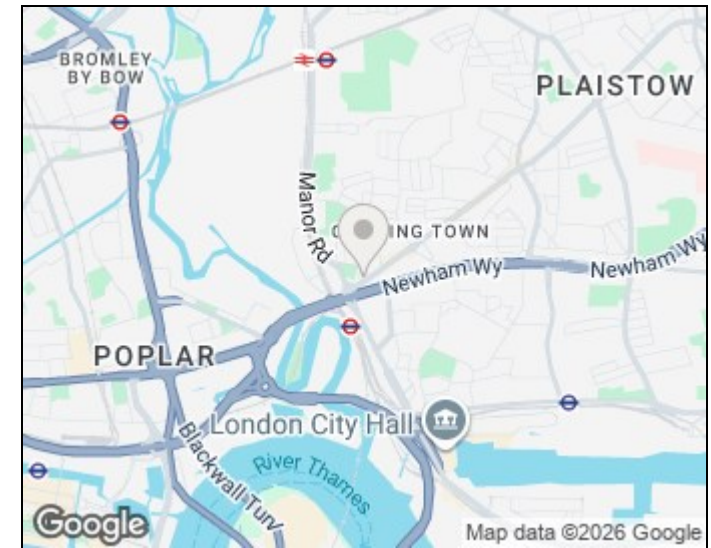
Lease Remaining: 115 years | Ground Rent: £250 pa | Service Charge: £4,100 pa

## Floorplan

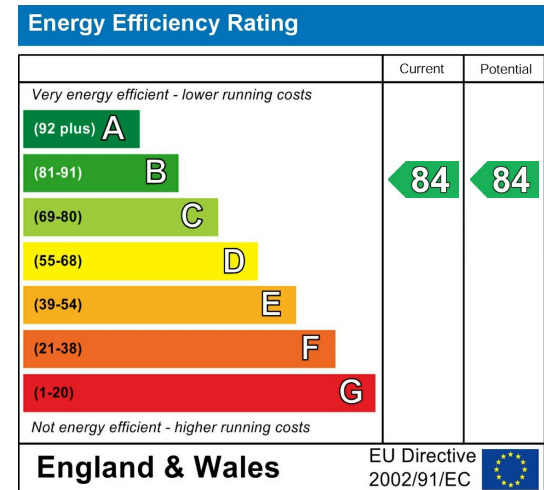


These particulars, whilst believed to be accurate are set out as a general outline only for guidance and do not constitute any part of an offer or contract. Intending purchasers should not rely on them as statements of representation of fact, but must satisfy themselves by inspection or otherwise as to their accuracy. No person in this firm's employment has the authority to make or give any representation or warranty in respect of the property.

## Area Map



## Energy Efficiency Graph



Unit B 20 Western Gateway, Royal Victoria  
Dock, London, E16 1BS  
Tel: 020 3946 6000 Email:  
docklands@madisonbrook.com  
<https://madisonbrook.com/>