



Great George Chambers,
Great George St.

ZENKO
CITY LIVING

FOR SALE

£295,950

A HIGH SPECIFICATION TWO BEDROOM DUPLEX APARTMENT
WITH PERIOD FEATURES



















2

Bedrooms

2

Bathrooms

950

Sq. Ft.



ABOUT

Great George Chambers is a development of just two apartments located directly across from Leeds General Infirmary and is moments away from Millennium Square and the law courts.

This duplex apartment has been recently renovated to a high standard and occupies the first and second floor levels. The open plan kitchen/living area, shower room and second bedroom are on the first floor with the master bedroom and ensuite occupying the upper floor.

MODERN DUPLEX APARTMENT WITH PERIOD FEATURES

LARGER THAN AVERAGE - APPROX. 950 SQUARE FEET

NEWLY RECARPETED AND REDECORATED - PRISTINE CONDITION

MANY AMENITIES ON THE DOORSTEP

CENTRALLY LOCATED CLOSE TO LGI AND MILLENIUM SQUARE

COUNCIL TAX BAND: E

ONE OF ONLY TWO APARTMENTS IN THE BLOCK

LEASEHOLD

EPC: D



ABOUT.... continued

Leasehold
Ground rent: £200 P.A
Service charge approx. £2000
Lease length: 250 years from 2018



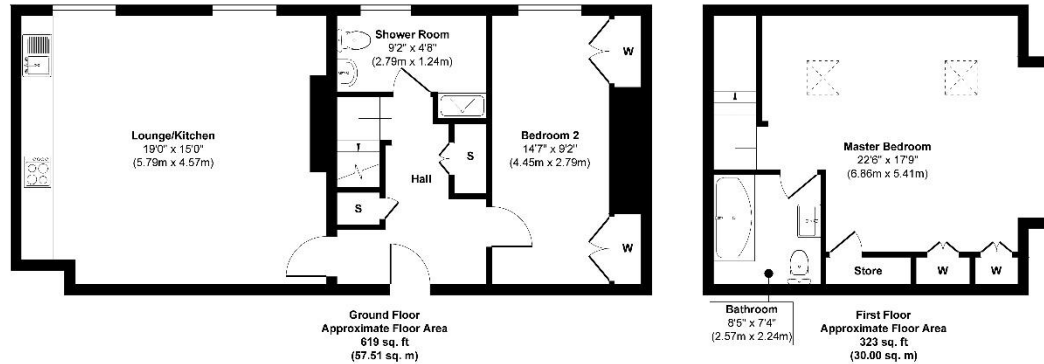






Floorplan

Apartment 1 The Chambers, 45-47 Great George Street, Leeds,

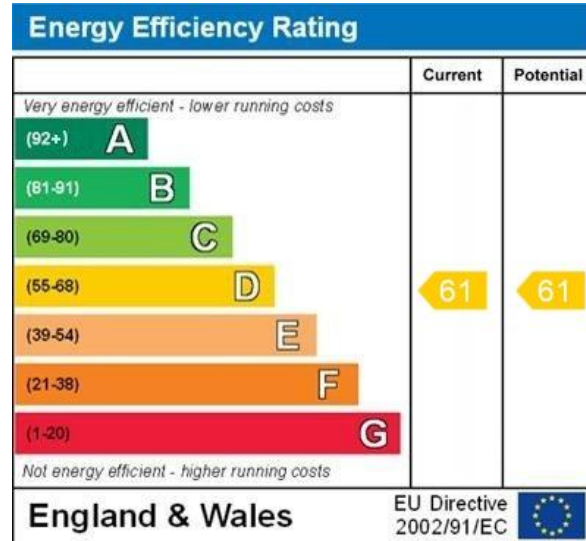


Approx. Gross Internal Floor Area 942 sq. ft / 87.51 sq. m

Illustration for identification purposes only, measurements are approximate, not to scale.
Produced by Elements Property



EPC



WWW.EPC4U.COM



Lease information

250 from
2018

Lease length

£2000
P.A

Service charge

£250
P.A

Ground rent



For more information or to arrange a viewing contact
Ian Darley, Zenko Properties



Zenko Properties, 2 The
Chandlers, Leeds, LS2 7EZ



0113 247 0777



ian@zenkoproperties.co.uk



www.zenkoproperties.co.uk



ZENKO
CITY LIVING