



4 Bed House - Detached

54 Devonshire Avenue, Amber Heights, Ripley DE5 3SS

Offers Around £365,000 Freehold



4



2



2



C

Fletcher
& Company

www.fletcherandcompany.co.uk

- Highly Appealing Detached Home
- Cul-de-Sac Location - Far-Reaching Views
- Potential to be Improved - No Chain Involved
- Lounge, Dining Room, Breakfast Kitchen
- Four Double Bedrooms & Two Bathrooms
- Generous Size Garden
- Block Paved Driveway & Double Garage with Electric Door
- Open Fields to Rear
- Handy for A38 & M1 Motorway
- Excellent Local Amenities - Shops, Schools & Countryside Walks

NO CHAIN - This is a highly appealing four bedroom detached home with double garage in Amber Heights. Cul-de-sac location with far-reaching views.

The Location

Amber Heights is positioned close to countryside and located on the edge of the popular Derbyshire town of Ripley. The property gives easy access to Ripley town centre, which offers a good range of local amenities including shops, market, restaurants, primary/secondary schools, recreational facilities and regular bus services. Its convenient position benefits for those who enjoy the outdoor pursuits with the open countryside, which is easily accessible.

The famous old market town of Ashbourne, known as the gateway to Dovedale and The Peak District National Park is situated some 15 miles to the west. Matlock, Bakewell and Chatsworth House are also within easy travelling distance. The City of Derby is approximately 9 miles to the south.

There is easy access on to the A38 leading to the M1 motorway (Junction 26 and 28). It is also convenient for access to Chesterfield, Sheffield and Nottingham.

Accommodation

Ground Floor

Entrance Hall

17'10" x 7'4" (5.45 x 2.25)

With half glazed entrance door, coving to ceiling, radiator, burglar alarm control panel and staircase leading to first floor.

Coat Store

3'10" x 2'7" (1.19 x 0.81)

With coat hangers and internal panelled door.

Lounge

20'11" x 12'2" (6.40 x 3.71)

With gas fire, three radiators, coving to ceiling, double glazed bow window with deep window sill with aspect to front, double glazed sliding patio door with internal secondary double glazing giving access to rear garden and far-reaching views.



Dining Room

12'5" x 10'5" (3.79 x 3.19)

With radiator, coving to ceiling, double glazed window to front and half glazed internal door (Please note there is potential to knock the dining room into the kitchen if desired).



Breakfast Kitchen

12'10" x 12'1" (3.92 x 3.69)

With one and a half sink unit with mixer tap, wall and base fitted units with matching worktops, tile splashbacks, tiled effect flooring, radiator, far-reaching views to rear, electric cooker point, double glazed window to rear, plumbing for automatic washing machine, vent for tumble dryer and internal panelled door.



Pantry

6'4" x 2'8" (1.95 x 0.82)

With shelving, tiled effect floor, Baxi central heating boiler and panelled door giving access to garden.

Shower Room

6'7" x 4'11" (2.01 x 1.52)

With separate shower cubicle with electric shower, pedestal wash handbasin, low level WC, tile splashbacks, radiator, double glazed window to rear, far-reaching views, extractor fan and internal panelled door.



First Floor Landing

10'1" x 3'10" (3.09 x 1.19)

With radiator and access to roof space.

Double Bedroom One

15'4" x 10'4" (4.68 x 3.16)

With a good range of fitted wardrobes, chest of drawers and bedside cabinets, coving to ceiling, radiator, additional built-in cupboard, double glazed window to front and internal panelled door.



Double Bedroom Two

12'0" x 10'3" (3.67 x 3.14)

With radiator, coving to ceiling, double glazed window to front and internal panelled door.



Double Bedroom Three

12'10" x 10'6" (3.92 x 3.21)

With radiator, coving to ceiling, far-reaching views to rear, double glazed window and internal panelled door.



Double Bedroom Four

10'5" x 8'2" (3.19 x 2.51)

With built-in wardrobe, radiator, coving to ceiling, far-reaching views to rear, double glazed window and internal panelled door.



Family Bathroom

6'11" x 6'3" (2.12 x 1.91)

With bath with shower, fitted wash basin, low level WC, tile splashbacks, heated towel rail/radiator, built-in cupboard housing the hot water cylinder, wall mounted mirror medicine cabinet, double glazed window to rear and internal panelled door.



Front Garden

The property is set back from the pavement edge behind a fore garden with inset plants and rockery.

Side Garden

With side access gate, paving and timber shed providing storage.

Rear Garden

To the rear of the property is a landscaped rear garden enjoying far-reaching views and also overlooking open fields. The garden has been designed for low maintenance with carefully shaped areas with gravel beds and resin. A patio area provides a pleasant sitting out and entertaining space. Rear access gate opening onto open fields and feature specimen tree.



Driveway

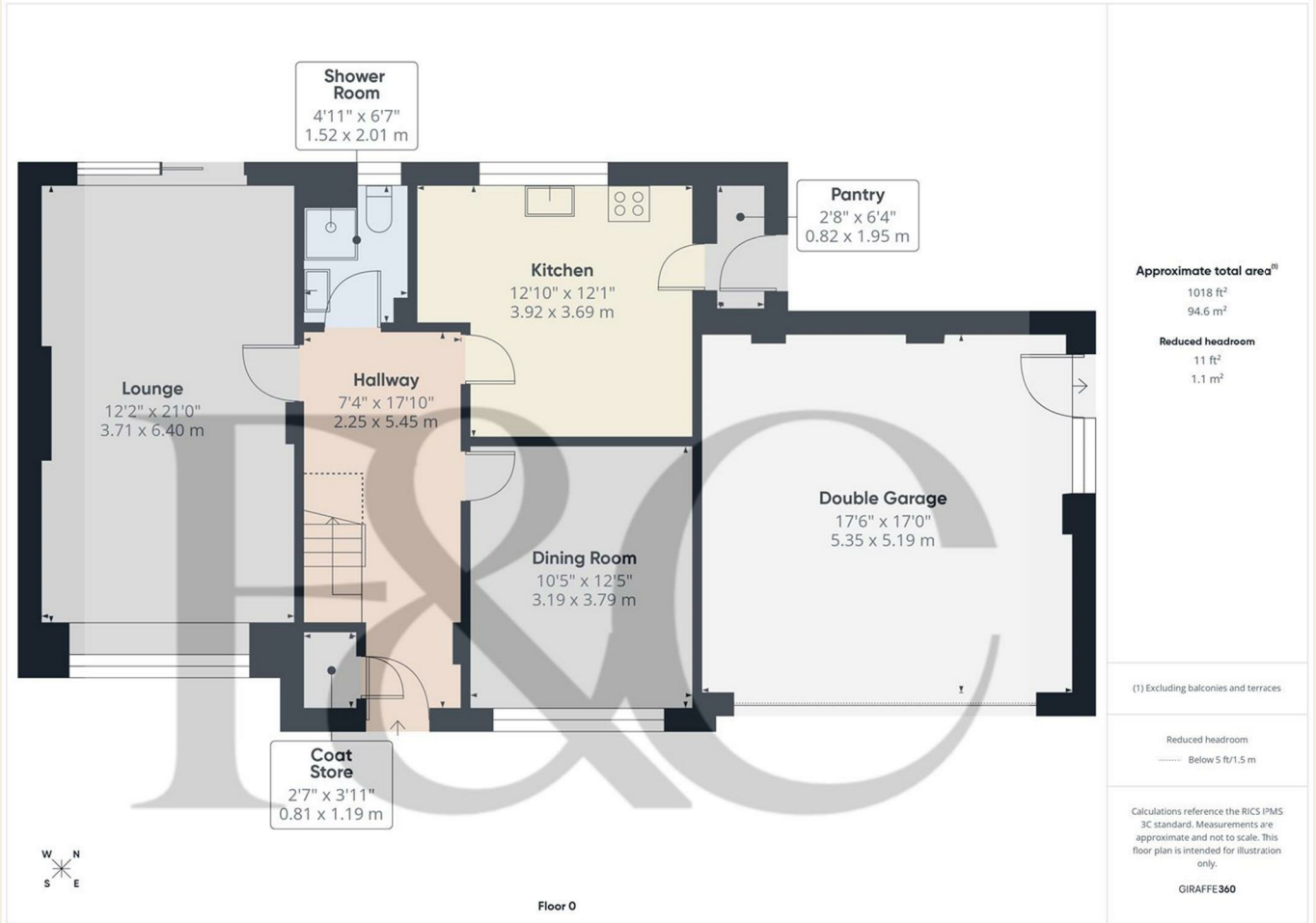
A block paved driveway provides car standing spaces and leads to a double garage.

Double Garage

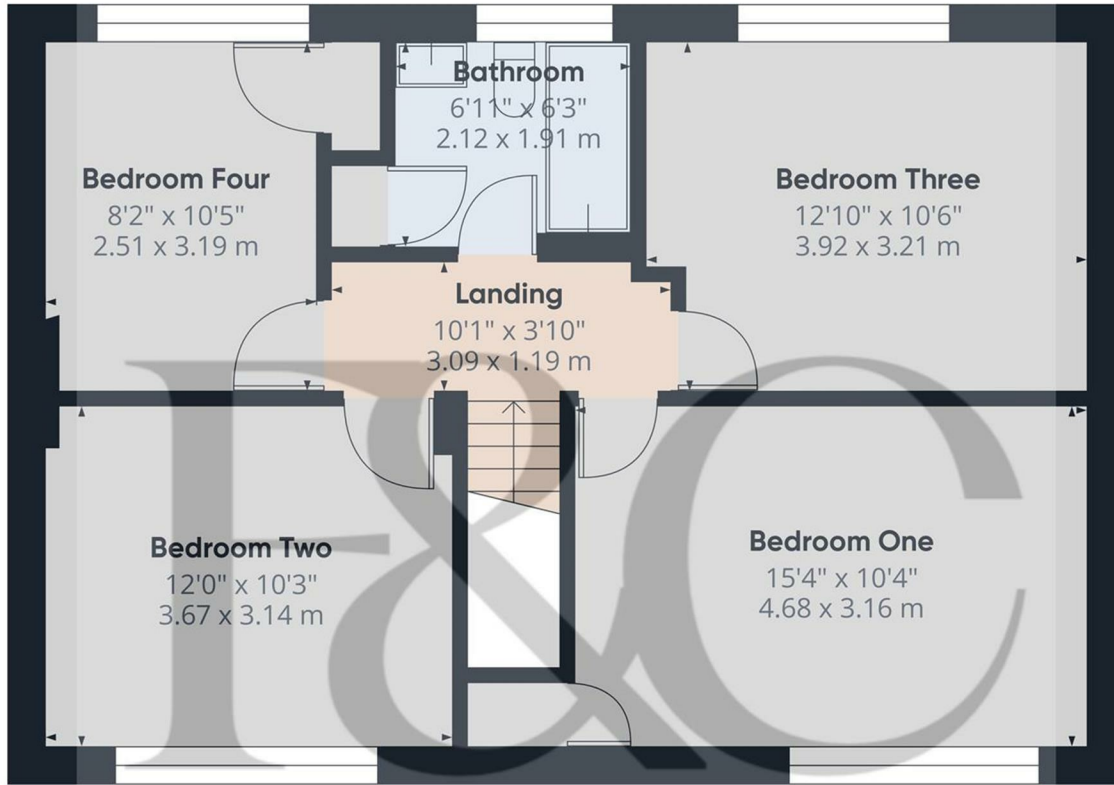
17'6" x 17'0" (5.35 x 5.19)

With concrete floor, gas metre, electric consumer unit, side window, side personnel door, power, lighting and electric front door.

Council Tax Band D



These particulars do not constitute an offer or a contract neither do they form part of an offer or contract. The vendor does not make or give and Messrs. Fletcher & Company nor any person employed has any authority to make or give any representation or warranty, written or oral, in relation to this property. Whilst we endeavour to make our sales details accurate and reliable, if there is any point which is of particular importance to you, please contact the office and we will be pleased to check the information for you, particularly if contemplating travelling some distance to view the property. None of the services or appliances to the property have been tested and any prospective purchasers should satisfy themselves as to their adequacy prior to committing themselves to purchase.



Approximate total areaⁱⁱⁱ
 596 ft²
 55.5 m²

(1) Excluding balconies and terraces

Calculations reference the RICS IPMS 3C standard. Measurements are approximate and not to scale. This floor plan is intended for illustration only.

GIRAFFE360

Floor 1

Energy Efficiency Rating

	Current	Potential
<i>Very energy efficient - lower running costs</i>		
(92 plus) A		
(81-91) B		
(69-80) C		
(55-68) D		
(39-54) E		
(21-38) F		
(1-20) G		
<i>Not energy efficient - higher running costs</i>		
	72	82
England & Wales	EU Directive 2002/91/EC	

Environmental Impact (CO₂) Rating

	Current	Potential
<i>Very environmentally friendly - lower CO₂ emissions</i>		
(92 plus) A		
(81-91) B		
(69-80) C		
(55-68) D		
(39-54) E		
(21-38) F		
(1-20) G		
<i>Not environmentally friendly - higher CO₂ emissions</i>		
England & Wales	EU Directive 2002/91/EC	

These particulars do not constitute an offer or a contract neither do they form part of an offer or contract. The vendor does not make or give and Messrs. Fletcher & Company nor any person employed has any authority to make or give any representation or warranty, written or oral, in relation to this property. Whilst we endeavour to make our sales details accurate and reliable, if there is any point which is of particular importance to you, please contact the office and we will be pleased to check the information for you, particularly if contemplating travelling some distance to view the property. None of the services or appliances to the property have been tested and any prospective purchasers should satisfy themselves as to their adequacy prior to committing themselves to purchase.