



## Abbey Street, SE1

### £400,000

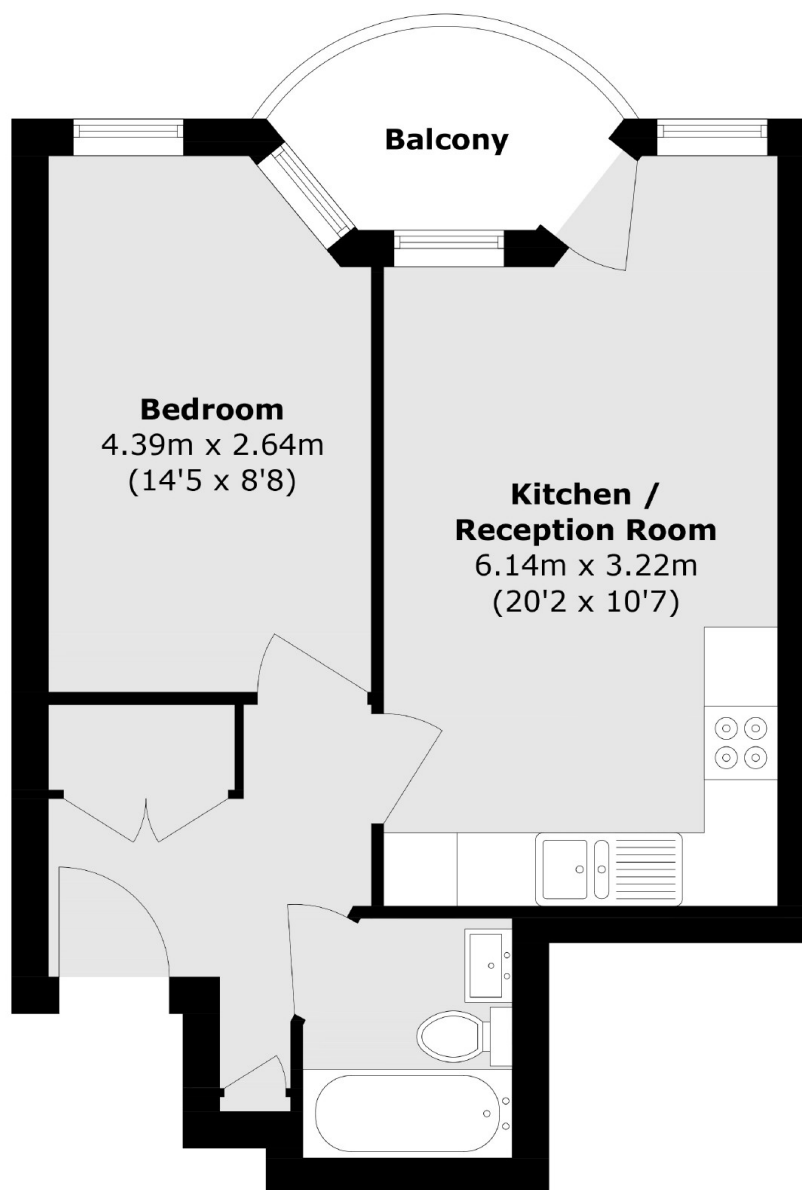
Situated in this sought after development, this one double bedroom flat is in stunning condition and boasts a spacious open plan kitchen/ living area, modern bathroom, private balcony and ample storage.

Abbey street is enviably located with easy access to Bermondsey Street and London Bridge, along with Maltby Street Market, Bermondsey and the riverside. The transport links are excellent and there are numerous local amenities and attractions.

### Features

- One Double Bedroom
- Excellent Condition
- Chain Free
- Incredible Location
- Balcony
- Ample Storage

# Abbey Street, London, SE1



Total area (approx.): 39.8 sq. m (428.4 sq. ft)

Balcony area (approx.): 3.3 sq. m (35.5 sq. ft)

## Dexters

Canada Water  
Montreal House  
Surrey Quays Road  
London

Sales  
020 7650 5144

Energy Rating: C. We aim to make our particulars both accurate and reliable. However they are not guaranteed; nor do they form part of an offer or contract. If you require clarification on any points then please contact us, especially if you're traveling some distance to view. Please note that appliances and heating systems have not been tested and therefore no warranties can be given as to their good working order.

 **RICS** | Regulated  
Estate Agent  
and Letting Agent

dexters.co.uk