



Bromyard Road, Birmingham B11 3BA

welcome to

Bromyard Road, Birmingham

A spacious three-bedroom end-of-terrace home on Bromyard Road featuring two reception rooms, a rear kitchen, ground-floor WC, multiple storage spaces, a lean-to area, and a family bathroom. Includes a private driveway and steps up to the front entrance.

Inner Hallway

Stairs and carpet

7' 11" x 7' 6" (2.41m x 2.29m)

Window to rear, radiator and carpet

Cloak Room

Toilet, sink and boiler

Bathroom

Toilet, sink, bath, window to side, radiator and vinyl tiles

Lounge

14' 6" Max x 9' 4" (4.42m Max x 2.84m)

Bay window to front, radiator, carpet and feature gas fire

Dining Room

12' 2" x 12' 8" (3.71m x 3.86m)

Double glazed window to rear, gas heater, radiator, carpet. door to rear for innner hall

Kitchen

12' 6" x 74' 4" (3.81m x 22.66m)

Window to side, sink, door to side for conservatory/lean to, tiled flooring

Storage In Lean To

10' x 7' 7" (3.05m x 2.31m)

Storage Room

Conservatory/Lean To

31' 8" x 7' 8" (9.65m x 2.34m)

Conservatory/Lean to with large storage cupboard and W.C.

Bedroom One

12' 3" x 12' (3.73m x 3.66m)

Window to front, radiator and carpet

Bedroom Two

12' 2" x 9' 10" (3.71m x 3.00m)

Window to rear, radiator and carpet

Bedroom Three





view this property online shipways.co.uk/Property/SLY112154



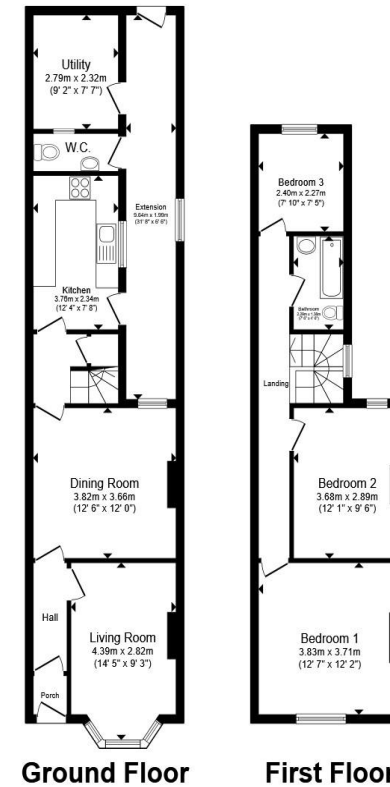
welcome to

Bromyard Road, Birmingham

- End-of-terrace
- Driveway
- Elevated front aspect
- Two reception rooms
- Rear kitchen with access to lean-to storage

Tenure: Freehold EPC Rating: E
Council Tax Band: B

£260,000



Total floor area 110.3 m² (1,187 sq.ft.) approx

This floor plan is for illustrative purposes only. It is not drawn to scale. Any measurements, floor areas (including any total floor area), openings and orientation are approximate. No details are guaranteed, they cannot be relied upon for any purpose and they do not form part of any agreement. No liability is taken for any error, omission or misstatement. A party must rely upon its own inspection(s). Powered by www.propertybox.io



view this property online shipways.co.uk/Property/SLY112154



Property Ref:
SLY112154 - 0003

1. MONEY LAUNDERING REGULATIONS Intending purchasers will be asked to produce identification documentation at a later stage and we would ask for your co-operation in order that there is no delay in agreeing the sale. 2. These particulars do not constitute part or all of an offer or contract. 3. The measurements indicated are supplied for guidance only and as such must be considered incorrect. Potential buyers are advised to recheck measurements before committing to any expense. 4. We have not tested any apparatus, equipment, fixtures or services and it is in the buyers interest to check the working condition of any appliances. 5. Where an EPC, or a Home Report (Scotland only) is held for this property, it is available for inspection at the branch by appointment. If you require a printed version of a Home Report, you will need to pay a reasonable production charge reflecting printing and other costs. 6. We are not able to offer an opinion either written or verbal on the content of these reports and this must be obtained from your legal representative. 7. Whilst we take care in preparing these reports, a buyer should ensure that his/her legal representative confirms as soon as possible all matters relating to title including the extent and boundaries of the property and other important matters before exchange of contracts.



0121 744 4595



shirley@shipways.co.uk



208 Stratford Road, Shirley, SOLIHULL, West Midlands, B90 3AG



shipways.co.uk