



Guide Price
£190,000

**Share of
Freehold**

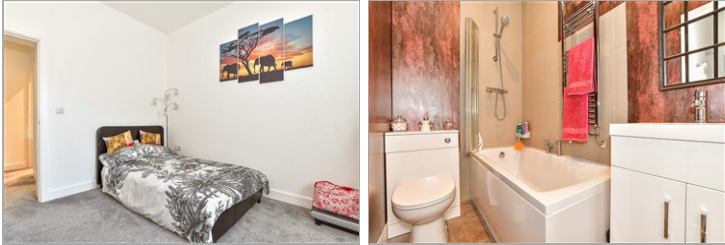
2x  1x  1x 

**Manor House, Manor
Road, Lydd, Romney
Marsh, Kent, TN29**

OVER 60?

Secure this property
for up to **59% less!**

Wards
Helping you move forwards



Main features

- Immaculate ground floor apartment
- 2 double bedrooms
- Quality fittings throughout
- Stylish modern decoration
- Lounge/diner with patio doors to landscaped private garden

Accommodation

GROUND FLOOR

Entrance Hall

Lounge/Diner: 19'2 x 9'8 (5.85m x 2.95m)

Kitchen: 11'2 x 6'8 (3.41m x 2.03m)

Bedroom 1: 13'6 x 10'6 (4.12m x 3.20m)

Bedroom 2: 13'7 x 9'6 (4.14m x 2.90m)

Bathroom

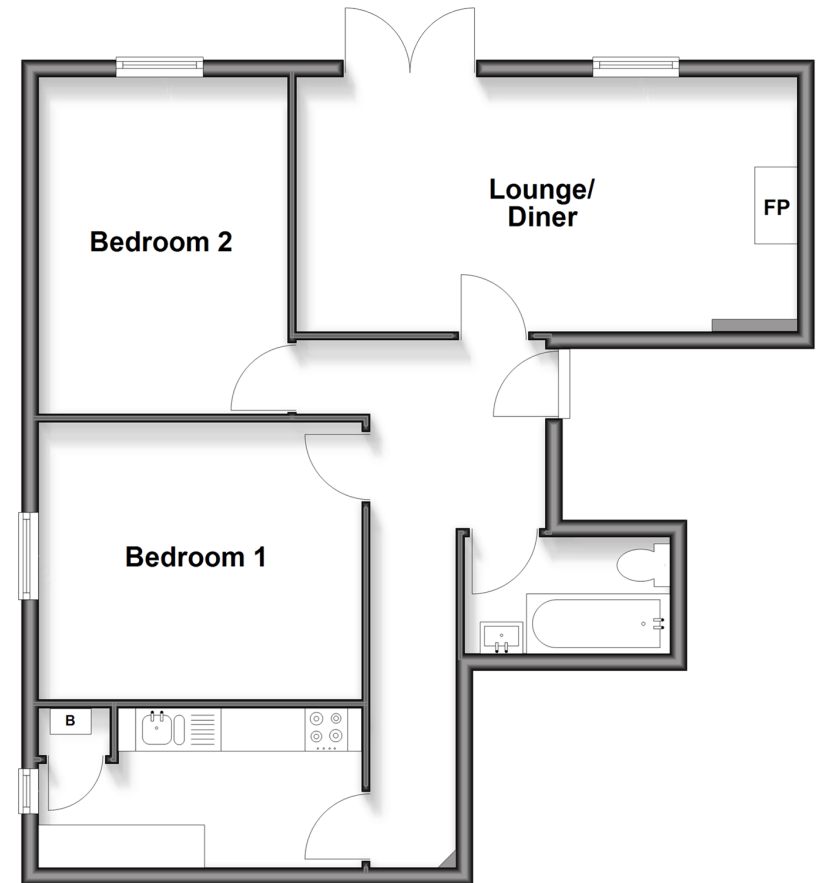
OUTSIDE

Rear Garden

Allocated Parking

Ground Floor

Approx. 63.0 sq. metres (677.7 sq. feet)



Call New Romney - 01797 363745 ■ wardsofkent.co.uk

■ Through a Homewise Home For Life Plan people aged 60+ can secure this property for up to 59% less, by purchasing a Lifetime Lease



13526122/20260401/AH/CA